



**DIP LOG
 CALCULATIONS**

COMPANY REICHHOLD ENERGY CORPORATION
 WELL COLUMBIA COUNTY NO. 1
 FIELD NEHALEM BASIN
 COUNTY COLUMBIA STATE OREGON
 LOCATION 310' NORTH & 812' WEST FROM THE CENTER OF C/AVL
 Sec 31 Twp 6N Rng 5W Elev N 8 1011.5
 Permanent Datum GROUND LEVEL Elev 1021 OF 1021
 Log Measured From K.B. or 10.5 Ft. Above Perm. Datum
 Drilling Measured From K.B.

Date 9-2-77
 Depth - Driller 3111
 Depth - Welex 3105
 Firm Log Inter. 3100
 Top Log Inter. 680
 Casing Driller 750 @ 353
 Casing Welex 363.4
 Bit Size 5 1/4
 Type Fluid in Hole Oil & Lithite
 Date 75 Visc. 1.46
 pH 7.5 Fluid Loss 1.4 ml
 Source of Sample BIT
 Rm @ Meas. Temp. 2.40 @ 68 °F
 Rmc @ Meas. Temp. 2.30 @ 60 °F
 Rm @ Meas. Temp. 1.50 @ 60 °F
 Rmc @ Meas. Temp. 1.45 @ 60 °F
 Source Rm/Rmc MC/SUBED
 Rm @ BHT 1.50 @ 118 °F
 Rmc @ BHT 1.45 @ 118 °F
 Time Since Circ 3 HRS.
 Max. Rec. Temp. 118 °F @ BHT
 ESDU 1 Location 2430 DIVE
 Measured By W.D. BRUBER

Welex does not guarantee the accuracy of any interpretation of log data, conversion of log data to physical rock parameters, or recommendations which may be given by Welex personnel or which may appear on the log or in any other form. Any user of such data, interpretations, conversions, or recommendations agrees that Welex is not responsible, except where due to gross negligence or willful misconduct, for any loss, damages, or expenses from the use thereof.

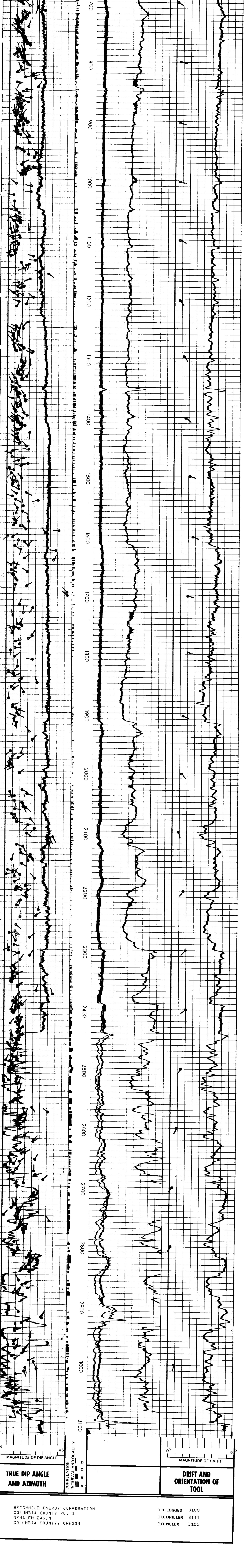
Magnetic Declination NORTH 21° EAST

TABLE OF CONSTANTS FOR DETERMINING VERTICAL DIFFERENCE AT VARIOUS DIP ANGLES

DIP ANGLES Degrees	CONSTANT	DIP ANGLES Degrees	CONSTANT	DIP ANGLES Degrees	CONSTANT	DIP ANGLES Degrees	CONSTANT
1	.0175	11	.194	21	.384	35	.700
2	.035	12	.213	22	.404	40	.839
3	.052	13	.231	23	.425	45	1.000
4	.070	14	.249	24	.445	50	1.192
5	.088	15	.268	25	.466	55	1.428
6	.105	16	.287	26	.487	60	1.732
7	.123	17	.306	27	.509	65	2.144
8	.141	18	.325	28	.531	70	2.748
9	.158	19	.344	29	.554	75	3.732
10	.176	20	.364	30	.577	80	5.671

Vertical difference in feet is obtained by multiplying the constant for any given dip angle by the horizontal distance in feet.
 Example: Dip angle 10°, Horizontal distance 440 ft.
 Vertical difference = .176 x 440 = 77.44

GRAPHIC PRESENTATION



REICHHOLD ENERGY CORPORATION
 COLUMBIA COUNTY NO. 1
 NEHALEM BASIN
 COLUMBIA COUNTY, OREGON

T.D. LOGGED 3100
 T.D. DRILLER 3111
 T.D. WELEX 3105