

COMPANY: REICHHOLD ENERGY CORPORATION
 WELL: D.S.C.-COLUMBIA CO. NO. 2
 FIELD: NEHALEM BASIN
 COUNTY: COLUMBIA STATE: OREGON
 Location: SOUTH & 326' EAST OF THE NORTH 1/4 CORNER OF C/AVL 101 (W.B.M.)
 Sec: 14 Twp: 6N Rge: 5W
 Dip: 122° SOUTH & 326' EAST OF THE NORTH 1/4 CORNER OF C/AVL 101 (W.B.M.)

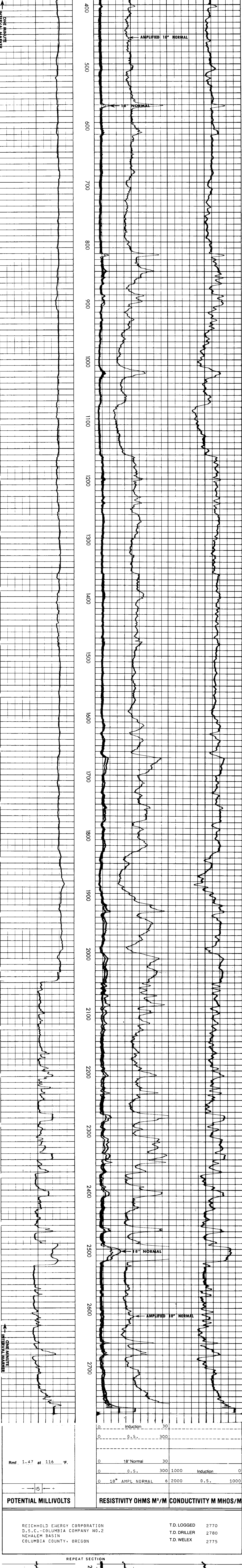
Permanent Datum: G.L. Elev. 537.6
 Log Measured from: K.B. Elev. 537.6
 Drilling Measured from: K.B. Elev. 537.6
 Date: 7-16-78
 Run No: ONE
 Depth-Driller: 2780
 Depth-Welex: 2775
 Btm. Log Inter.: 2770
 Top Log Inter.: 331
 Casing-Driller: 7 @ 331
 Casing-Welex: 331

Type Fluid in Hole		Bit Size	Types of Fluid
CYPAN & LIGNIT	6.1/8	6.1/8	
Dens: Visc.	6.9	1.53	
pH	8.5	14.0ml	
Source of Sample			
F _{meas} @ Meas Temp.	3.80 @ 72 °F		
F _{ind} @ Meas Temp.	2.85 @ 60 °F		
F _{meas} @ Meas Temp.	3.45 @ 60 °F		
Source R _{meas}			
R _{meas} @ Meas Temp.	2.35 @ 116 °F		
R _{meas} @ BHT	2.35 @ 116 °F		
Time Since Circ.	2.1/2 HRS.		
Max. Rec. Temp.	116 °F @ BHT		
Equip. Location	8586 I WOODLAND		
Recorded By	MR. KENNEDY		

SCALE CHANGES		Depth	Scale Up Hole	Scale Down Hole
Change in Mud Type or Additional Samples				
Date Sample No.				
Depth—Driller				
Type Fluid in Hole				

EQUIPMENT DATA			
Run No.	ONE	Tool Type and No.	IEL-18852
Pad Type		Tool Position	FREE
Other			6 1/8 HOLE

Notes: This log contains the actual data interpretation of log data, conversion of log data to physical rock parameters, or recommendations which may be given by Welex personnel. Such data, interpretations, conversions, or recommendations are for informational purposes only. Welex is not responsible for any loss, damages, or expenses resulting from the use thereof.



REICHHOLD ENERGY CORPORATION
 D.S.C.-COLUMBIA COMPANY NO.2
 NEHALEM BASIN
 COLUMBIA COUNTY, OREGON

T.D. LOGGED 2770
 T.D. DRILLER 2780
 T.D. WELEX 2775

