



2"-100'

COMPANY REICHOLD ENERGY CORPORATION
 WELL COLUMBIA COUNTY NO. 3 R/D NO. 1
 FIELD NEHALEM BASIN
 COUNTY COLUMBIA STATE CALIFORNIA
 Location 1561' SOUTH AND 630' WEST
 OF THE NORTHEAST CORNER OF SECT 16
 10N (W.B.M.)

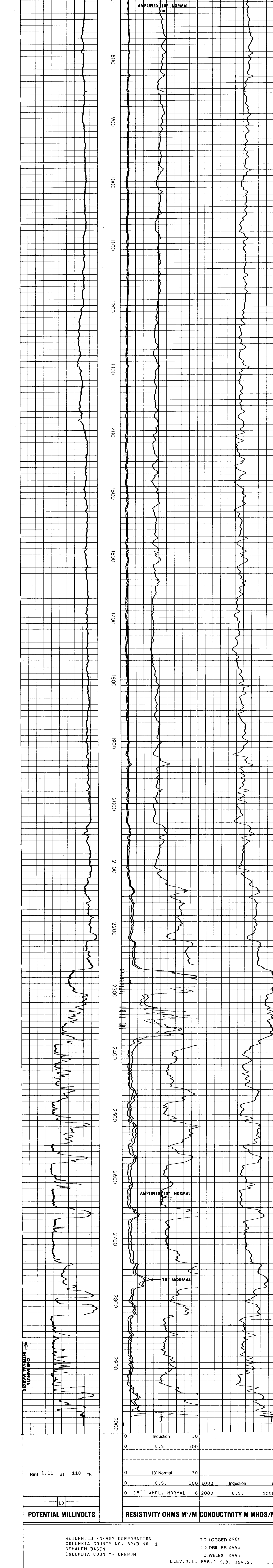
Permanent Datum G.L. OR 11.2 Elev. K.B. 869.2
 Log Measured From K.B. 858.2 Elev. K.B. 869.2
 Drilling Measured From K.B. 858.2 Elev. K.B. 869.2
 Date 6-4-79
 Run No. U/E R/D
 Depth-Driller 2993
 Depth-Welex 2993
 Etm. Log. Meter 2993
 Casing-Driller 396 @ 391
 Casing-Welex 396 @ 391
 Type Fluid in Hole U/GND SULF
 pH Fluid Loss 77 4.5
 Source of Sample PIT 10.0 @ 6.4 ml
 R @ Meas. Temp. 2.40 @ 86 F
 R @ Meas. Temp. 1.90 @ 68 F
 R @ Meas. Temp. 2.92 @ 72 F
 Source R_{mf} R_{sc} MEASURED
 R @ BHT 1.74 @ 118 F
 R @ BHT 1.18 F @ BHT
 Max. Fac. Temp. 118 F @ BHT
 Time Since Circ 3 1/2 HRS.
 Equip. Location 9430 MIDLAND
 Witnessed By J. KENNEDY
 J. BRUNEN
 MCBURNIE, J. CLARE

Service Ticket No. 048330 Remarks:

Change in Mud Type or Additional Samples	Type Log	Depth	SCALE CHANGES	Scale Up Hole	Scale Down Hole
Date Sample No.					
Depth-Driller					
Type Fluid in Hole					

Dens. Visc.	ph Fluid Loss	ml	Run No.	Tool Type and No.	Pad Type	Tool Position	Other
R @ Meas. Temp.			1	R/D	11242	TEL	FREE
R @ Meas. Temp.							
R @ Meas. Temp.							
Source R _{mf} R _{sc}							
R @ BHT	1.74	@ 118 F					
R @ BHT	1.11	@ 118 F					
R @ BHT	2.00	@ 118 F					

Welex does not guarantee the accuracy of any interpretation of log data, conversion of log data to physical rock parameters, or recommendations which may be given by Welex personnel or which may appear on the log or in any other form. Any user of such data, interpretations, conversions or recommendations agrees that Welex is not responsible except where due to gross negligence or willful misconduct for any loss, damages or expenses resulting from the use thereof.



REICHOLD ENERGY CORPORATION
 COLUMBIA COUNTY NO. 3 R/D NO. 1
 NEHALEM BASIN
 COLUMBIA COUNTY, OREGON

T.D. LOGGED 2988
 T.D. DRILLER 2993
 T.D. WELEX 2993
 ELEV. G.L. 858.2 K.B. 869.2.

