

WELL R.E.C. - Columbia Co. #3 RD 1
 COMPANY REICHHOLD ENERGY CORP.
 AREA NEHALEM BASIN
 LOCATION 1561'S & 630'W OF NE COR.
 OF SEC 10; T6N; R5W, 4BM
 COUNTY, STATE COLUMBIA CO., OREGON

STATE DEPARTMENT OF GEOLOGY AND MINERAL INDUSTRIES
 1005 STATE OFFICE BUILDING
 PORTLAND, OREGON 97201
WESTERN GEO-ENGINEERS
 "A SERVICE TO THE OIL AND GAS INDUSTRY"

LITHOLOGY SYMBOLS
 Sand, Clay, Silt, Silty Sand, Silty Clay, Silty Shale, Shale, Claystone, Sandstone, Lignite, Volcanic, Intrusive, Salt, Limestone, Chert

REMARKS
 WELL ELEV. GL. 858.2'
 SALINITY IN PPM CL. 869.4'
 FILTRATE IN CC/30 MIN.
 GAS TRAP AGITATOR
 MUD LIGNOSULFONATE

MUD DATA
 W WEIGHT
 V VISCOSITY
 F FILTRATE
 FC FILTER CAKE
 SD SAND IN %

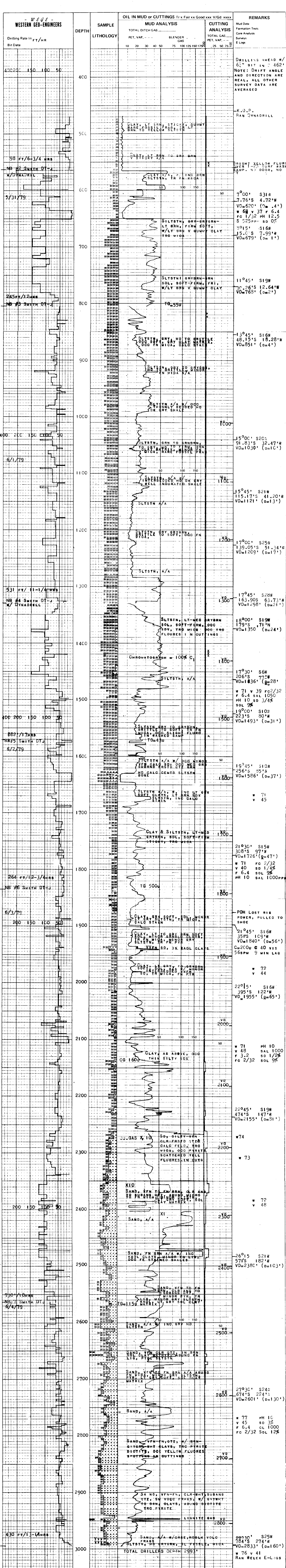
LEGEND
 S SALINITY
 R RESISTIVITY
 RF FILTRATE RESISTIVITY
BIT DATA
 NB NEW BIT
 RRB RERUN BIT

CORE BIT
 WCB WIRE LINE CB
OTHER DATA
 TG TRIP GAS
 CG CONNECTION GAS
 C CARBIDE GAS

CR CIRCULATE RETURNS
 NR NO RETURN
 DST DRILL STEM TEST
] CORE INTERVAL

DATE 5/31/79 TO 6/4/79 DEPTH 460' TO 2993' ENGINEERS REAY LOCKE

TAYLOR DRILLING #4
CASING
 7" TO 391"
 TO



REICHHOLD ENERGY CORP. COLUMBIA COUNTY #3 REDRILL 1. COLUMBIA COUNTY, OREGON SEC 10; T6N; R5W