



NEUTRON-
MICRO-SEISMOGRAM®
LOG-CASED HOLE

REICHOLD ENERGY CORPORATION
COLUMBIA CO. NO. 1
NEHALEM BASIN
COLUMBIA COUNTY, OREGON
WELL NEHALEM BASIN
FIELD NEHALEM BASIN
COUNTY COLUMBIA
STATE OREGON
Location 1563' SOUTH AND 630' WEST Corner Services
M. J. OF THE NORTHEAST CORNER OF (4.8. PERF.)

COMPANY REICHOLD ENERGY CORPORATION
CORPORATION COLUMBIA CO. NO. 1
NEHALEM BASIN
COLUMBIA COUNTY, OREGON
WELL NEHALEM BASIN
FIELD NEHALEM BASIN
COUNTY COLUMBIA
STATE OREGON

WELL R/D NO. 1
FIELD NEHALEM BASIN
COUNTY COLUMBIA
STATE OREGON

Log No. 1000
Date & Time Survey 6-7-79 @ 10:11:00 A.M.
Type Cementing Operation PRIMARY
Depth Driller 2414
Logged Interval 2414 to 2514
Casing Driller 2414 @ 2514
From Casing - D.V. To 2436

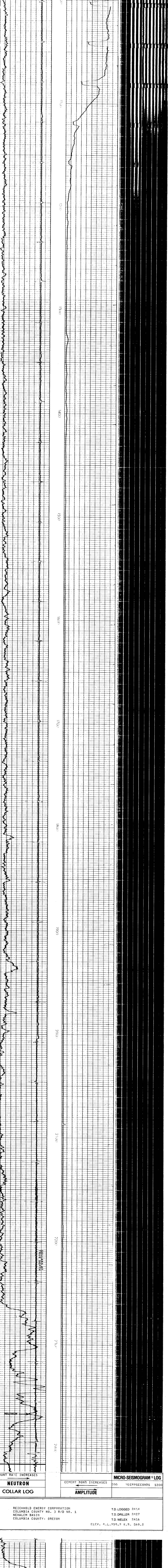
Amount & Type Cement N/A
Amount & Type Grout N/A
Fluid Level in Hole FULL
Slurry PPM (Cl) N/A
Weight In/Out - Vis N/A
Approved Logged Casing Top 1000
Calculated Cement Top 1180
Log No. 1000
Temperature 14
Spinning Recorder 4 2 1/2
Equipment - Location 9430 WOODLAND
Recorded by J. KENNEDY
Witnessed by J. KENNEDY

BORE HOLE RECORD			CASING RECORD			
Bit Size	From	To	Csg. Size	Wt.	From	To
			4 1/2		9	
			17/2			

Service Ticket No. 048881 Remarks

Welex does not guarantee the accuracy of any interpretation of log data, conversion of log data to physical rock parameters, or recommendations which may be given by Welex personnel or which may appear on the log or in any other form. Any user of such data, interpretations, conversions, or recommendations agrees that Welex is not responsible, except where due to gross negligence or willful misconduct, for any loss, damage, or expenses resulting from the use hereof.

AMPLITUDE 200 MICROSECONDS 1200
CEMENT BOND INCREASES MICRO-SEISMOGRAM® LOG



COUNT RATE INCREASES NEUTRON COLLAR LOG
CEMENT BOND INCREASES MICRO-SEISMOGRAM® LOG
AMPLITUDE

REICHOLD ENERGY CORPORATION
COLUMBIA COUNTY NO. 3 R/D NO. 1
NEHALEM BASIN
COLUMBIA COUNTY, OREGON

T.D. LOGGED 2414
T.D. DRILLER 2427
T.D. WELEX 2416
ELEV. G.L. 959.2 K.B. 969.2

