

INDUCTION • ELECTRIC LOG

2" = 100'

COMPANY REICHOLD ENERGY CORPORATION  
COLUMBIA COUNTY NO. 3

FIELD NEHALEM BASIN  
COUNTY COLUMBIA STATE OREGON

Location 1564' SOUTH & 630' WEST OF OTHER SERVICES  
NORTHEAST CORNER OF 1/4  
(M.B.M.)  
DIP 314' / 411' 9"

Sec. 10 Twp. 6N Rge. 5W  
Elev. KB 869.4  
GL 858.2

Permanent Datum GL  
Log Measured From KB 0R 11.3ft Above Perm Datum  
Drilling Measured From KB 0NE 5-29-79  
Date 0NE 2932

Depth—Driller 2932  
Btm. Log Inter. 2927  
Top Log Inter. 2932  
Casing—Driller 7 @ 391  
Casing—Water 396

Bit Size 6 1/4  
Type Fluid in Hole LIGNO-SULF

Dens. L/Visc. 1.38  
pH Fluid Loss 12.0 @ 14.0 ml  
CIRCULATED  
R<sub>10</sub> @ Meas. Temp. 2.94 @ 80°F  
R<sub>100</sub> @ Meas. Temp. 2.57 @ 70°F  
R<sub>1000</sub> @ Meas. Temp. 2.27 @ 70°F

Source of Sample NEASURED  
R<sub>10</sub> @ Meas. Temp. 2.27 @ 116°F  
R<sub>100</sub> @ Meas. Temp. 2.12 @ 116°F  
R<sub>1000</sub> @ Meas. Temp. 1.67 @ 116°F

Time Since Circ. 2 1/2 HOURS  
Max. Rec. Temp. 146°F @ BHT  
Equip. Location 9430' W/D/LND

Recorded by KENNETH CLARE, BRUER  
Witnessed by

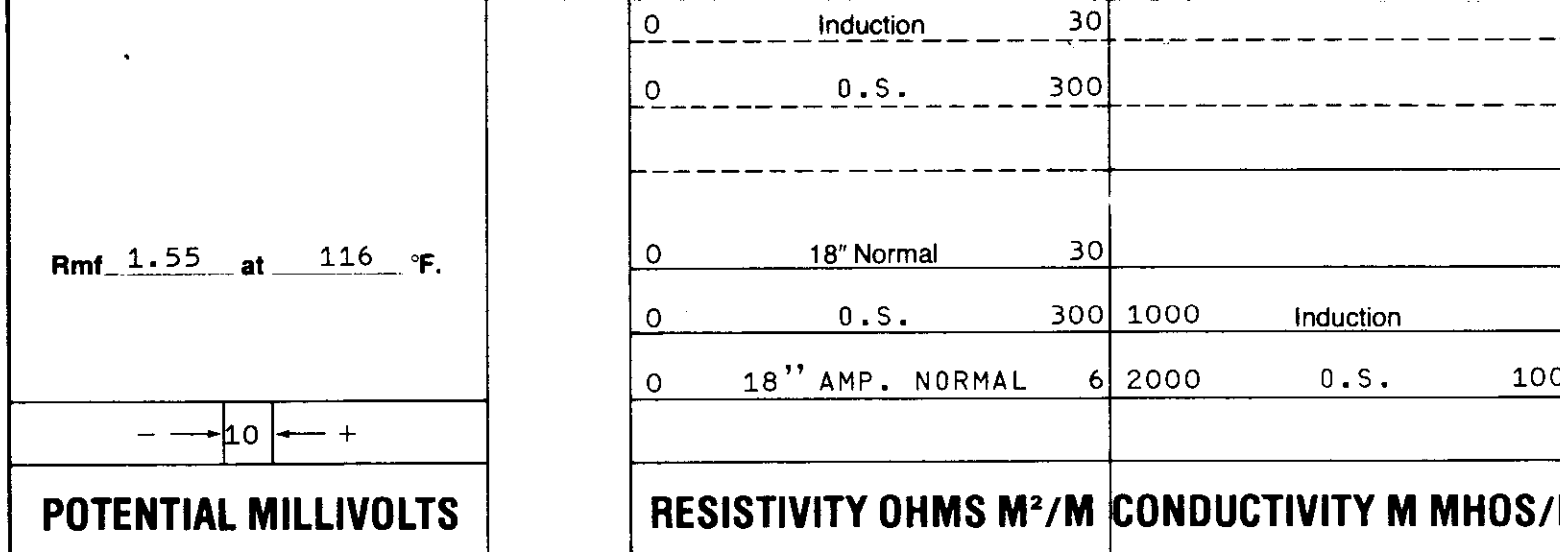
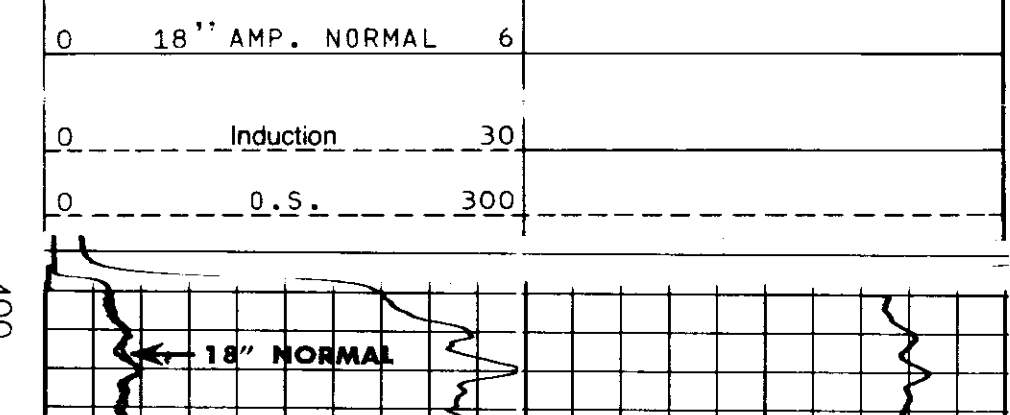
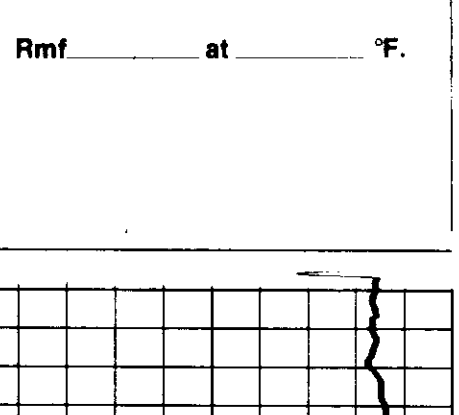
Service Ticket No 048877 Remarks:

Date	Sample No.	Type Log	SCALE CHANGES	
			Scale Up Hole	Scale Down Hole
Type Fluid in Hole				
Dens. / Visc. / pH / Fluid Loss				
Source of Sample				
R <sub>10</sub> @ Meas. Temp.				
R <sub>100</sub> @ Meas. Temp.				
R <sub>1000</sub> @ Meas. Temp.				
Source: R <sub>10</sub> / R <sub>100</sub> / R <sub>1000</sub>				
R <sub>10</sub> @ BHT				
R <sub>100</sub> @ BHT				
R <sub>1000</sub> @ BHT				

Equipment Data: Run No. ONE, Tool Type and No. TEL 11242, Pad Type, Tool Position FREE, Other

Well does not guarantee the accuracy of any interpretation of log data. Conversion of log data to physical rock parameters, or recommendations which may be given by Welex personnel which may appear on the log or in any other form. Any user of such data interpretations, conversions, or recommendations agrees that Welex is not responsible, except where due to gross negligence or willful misconduct, for any loss, damages, or expenses resulting from the use thereof.

2" = 100'



REICHOLD ENERGY CORPORATION  
COLUMBIA COUNTY NO. 3  
NEHALEM BASIN  
COLUMBIA COUNTY, OREGON

T.D. LOGGED 2927  
T.D. DRILLER 2932  
T.D. WELEX 2932  
ELEV.: KB 869.4 GL 858.2