



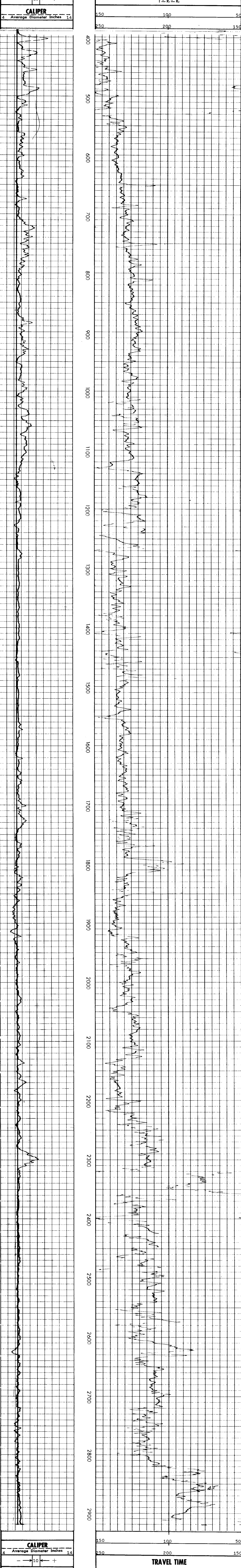
**COMPENSATED  
ACOUSTIC VELOCITY  
LOG**

COMPANY REICHHOLD ENERGY CORPORATION  
 WELL COLUMBIA COUNTY NO. 4  
 FIELD NEHALEM BASIN  
 COUNTY COLUMBIA STATE OREGON  
 Location 867' SOUTH & 1149' WEST OF THE NORTHEAST CORNER OF 1/4 (W.B.M.)  
 Sec. 15 Twp. 6N Rge. 5W  
 Elevation: KB 765.2  
 Log Measured From: G.L. 0R 111.2 Ft. Above Perm. Datum  
 Datum Measured From: G.L. 0R 111.2 Ft. Above Perm. Datum  
 Run No. ONE  
 Tool Type and No. AVL-19923  
 Pad Type FREE  
 Tool Position  
 Other Services  
 Date: 10/15/79  
 Depth—Driller: 2926  
 Bm. Log Int.: 2922  
 Top Log Int.: 401 @ 401  
 Casing—Driller: 7 @ 401  
 Best—Driller: 401.4  
 Type Fluid in Hole: S.P.A.N. & BEN-X  
 Dens. Visc.: 78 1.40  
 pH Fluid Loss: 10.5 1.3.2mi  
 Source of Sample: CIRCULATED  
 R<sub>1</sub> @ Meas. Temp.: 1.83 @ 80 °F  
 R<sub>2</sub> @ Meas. Temp.: 2.15 @ 72 °F  
 Source R<sub>1</sub> R<sub>2</sub>: MEASURED  
 R<sub>1</sub> @ BHT: 1.26 @ 117 °F  
 Time Spent Circ.: 5 1.2 HRS.  
 Max. Pipe Temp.: 117 °F @ BHT  
 Equip. Location: 9250 1 WOODLAND  
 Recorder by: KENNETH E. CLAVER, BRUER  
 Checked by:

Service Ticket No. 006575 Remarks:

Change in Mud Type or Additional Samples		SCALE CHANGES	
Date	Sample No.	Type Log	Depth
			Scale Up Hole
			Scale Down Hole
Type Fluid in Hole			
Dens. / Visc.			
pH Fluid Loss			
Source of Sample			
R <sub>1</sub> @ Meas. Temp.	@ °F	Run No.	Tool Type and No.
R <sub>2</sub> @ Meas. Temp.	@ °F	ONE	AVL-19923
R <sub>1</sub> @ Meas. Temp.	@ °F		Pad Type
Source: R <sub>1</sub> / R <sub>2</sub>			Tool Position
R <sub>1</sub> @ BHT	1.26 @ 117 °F		FREE
R <sub>2</sub> @ BHT	1.19 @ 117 °F		
R <sub>1</sub> @ BHT	1.32 @ 117 °F		

Welex does not guarantee the accuracy of any interpretation of log data, conversion of log data to physical rock parameters, or recommendations which may be given by Welex personnel or which may appear on the log or in any other form. Any user of such data, interpretations, conversions, or recommendations agrees that Welex is not responsible, except where due to gross negligence or willful misconduct, for any loss, damages, or expenses resulting from the use thereof.



REICHHOLD ENERGY CORPORATION  
 COLUMBIA COUNTY NO. 4  
 NEHALEM BASIN  
 COLUMBIA COUNTY, OREGON

T.D. LOGGED 2922  
 T.D. DRILLER 2926  
 T.D. WELLEX 2926  
 ELEV: KB 765.2 GL 754

