



INDUCTION • ELECTRIC LOG

COMPANY REICHOLD ENERGY CORPORATION
 WELL COLUMBIA COUNTY NO. 4 **Q/S** HOLE
 FIELD NEHALEM BASIN
 COUNTY COLUMBIA STATE OREGON

Location 867' SOUTH & 1149' WEST OF THE NEHALEM BASIN CORNER OF: (W.B.M.)
 COUNTY COLUMBIA STATE OREGON
 Other Services:
 D.P. C/AVL
 D.F. 754

Permanent Datum G.L. 11.2 Ft Above Perm. Datum
 Log Measured From K.B. Elev. 754
 Drilling Measured From K.B. Elev. 754
 Date 5-15-79

Run No. ONE
 Depth—Dripper 2926
 Depth—Welex 2926
 Btm. Log Inter. 2920
 Top Log Inter. 401
 Casing—Dripper 7 @ 401
 Casing—Welex 401 @ 401
 Bit Size 6 1/4

Fluid in Hole BEAN & SILAN
 Density 78
 Visc. 140
 pH 10.5
 Fluid Loss 13.2
 Source of Sample CIRCULATED

F_m @ Meas. Temp. 1.85 @ 80 F
 F_m @ Meas. Temp. 1.94 @ 72 F
 F_m @ Meas. Temp. 2.15 @ 72 F
 Source F_m R_m MEASURED
 F_m @ BHT 1.26 @ 117 F
 Time Since Circ. 3 1/2 HRS.
 Max. Rec. Temp. 1.17 F @ BHT.
 Equip. Location 9430 WOODLAND
 Recorded By KENNEDY
 Witnessed By MCBURNIE, CLARE, BRUER

Scale Up Hole
 Scale Down Hole

Change in Mud Type or Additional Samples
 Date Sample No.
 Depth—Dripper
 Type Fluid in Hole

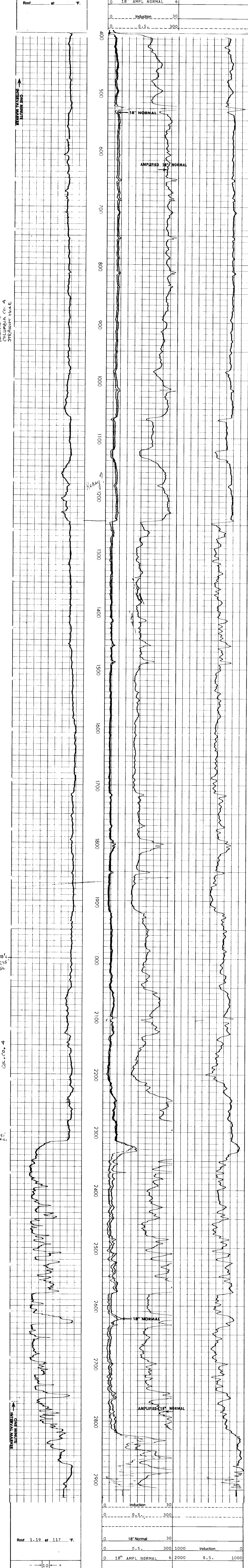
Fold Here

EQUIPMENT DATA				
Run No.	Tool Type and No.	Pad Type	Tool Position	Other
ONE	IEL-11242		FREE	

Welex does not guarantee the accuracy of any interpretation of log data. Conversion of log data to physical rock parameters, or recommendations which may be given by Welex personnel or which may appear on the log or in any other form. Any user of such data, interpretations, conversions, or recommendations agrees that Welex is not responsible, except where due to gross negligence or willful misconduct, for any loss, damages, or expenses resulting from the use thereof.

2" = 100'

POTENTIAL MILLIVOLTS	RESISTIVITY OHMS M ² /M	CONDUCTIVITY M MHOS/M
0	18" Normal 30	1000 Induction 0
0	0.S. 300	0.S. 2000 1000
0	18" AMPL NORMAL 6	
0	Induction 30	
0	0.S. 300	



POTENTIAL MILLIVOLTS	RESISTIVITY OHMS M ² /M	CONDUCTIVITY M MHOS/M
0	18" Normal 30	1000 Induction 0
0	0.S. 300	0.S. 2000 1000
0	18" AMPL NORMAL 6	
0	Induction 30	
0	0.S. 300	

REICHOLD ENERGY CORPORATION
 COLUMBIA COUNTY NO. 4
 NEHALEM BASIN
 COLUMBIA COUNTY, OREGON

T.D. LOGGED 2920
 T.D. DRILLER 2926
 T.D. WELEX 2926
 ELEV. KB 765.2 GL 754

