



REICHOLD ENERGY CORPORATION
 COLUMBIA COUNTY NO. 4
 NEHALEM BASIN

COMPANY: REICHOLD ENERGY CORPORATION
 WELL: COLUMBIA COUNTY NO. 4
 FIELD: NEHALEM BASIN

COUNTY: COLUMBIA
 STATE: CALIFORNIA
 Location: 867' SOUTH AND 1149' WEST OF THE NORTHEAST CORNER OF SECTION (W.B.M.)
 Other Services: PERF.

Sec: 15 Twp: 6N Rge: 5W
 G.L.: K.B. 086 11.2 Elev: 754
 Permanent Datum: K.B. Elev: 754
 Log Measured From: K.B. Elev: 754
 Colling Measured From: K.B. Elev: 754

Run No: 016
 Date & Time Survey: 5-16-79 @ 10:00 A.M.
 Date & Time Correlating: 5-16-79 @ 6:30 A.M.
 Correlating Operation: PRIMARY
 Depth: 2295
 Depth Water: 2395

Logging Interval: 2391 to 2472
 Logging Rate: 10
 Logging Interval: 2395 to 2472
 Logging Rate: 10

Fluid Column: D.V. Tool
 Spudcase Depth: 2926
 Spudcase Depth Element: SEE REMARKS
 Amount & Type Annular: FRESH WATER
 Type Fluid in Hole: FULL
 Fluid Level: N/A
 Sample: FPM C
 Weight: 16 gal
 Visc: N/A

Approx. Logged Com. Top: 1330
 Approx. Logged Com. Bottom: 1170
 Circulation Temperature: 306.44609, 504.15998
 Spacing: 4 1/2
 Equipment: MILD
 Location: 9430
 Recorded by: J. KENNEDY
 Witnessed by: J. REBURN

FOILD HERE

BORE HOLE RECORD				CASING RECORD			
Bit Size	From	To	Csg Size	Wt	From	To	Centralized Interval
6 1/4	401	2926	4 1/2	10.5	0	2473	
Scatched Interval							
Open Perforations							

Service Ticket No: N/A
 1130 A.M.
 Remarks: PUMPED 120 SACKS CLASS 6 CEMENT IN PLACE
 5-16-79

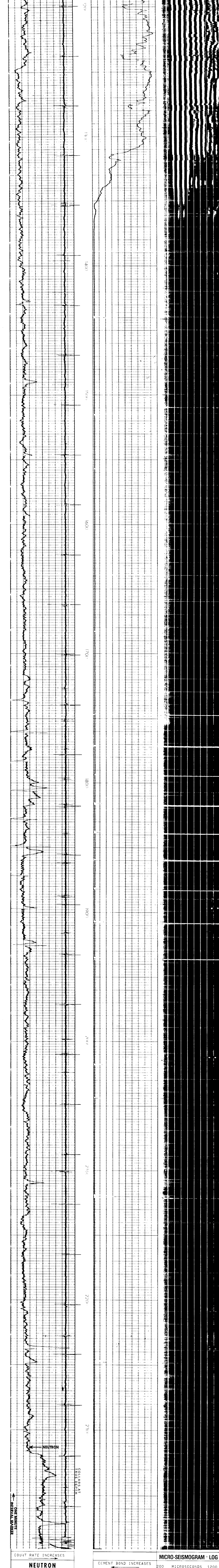
Welex does not guarantee the accuracy of any interpretation of log data, conversion of log data to physical rock parameters, or recommendations which may be given by Welex personnel. It is the responsibility of the user to verify all data, interpretations, and recommendations against their own logs and reports. Welex is not responsible for any errors or omissions, or for any damages or expenses resulting from the use thereof.

COLLAR LOG NEUTRON

COUNT RATE INCREASES

AMPLITUDE 200 MICROSECONDS 1200

CEMENT BOND INCREASES MICRO-SEISMOGRAM LOG



COLLAR LOG NEUTRON

COUNT RATE INCREASES

AMPLITUDE 200 MICROSECONDS 1200

CEMENT BOND INCREASES MICRO-SEISMOGRAM LOG

REICHOLD ENERGY CORPORATION
 COLUMBIA COUNTY NO. 4
 NEHALEM BASIN
 COLUMBIA COUNTY, OREGON

T.D. LOGGED 2391
 T.D. DRILLER 2395
 T.D. WELEX 2395
 ELEV. G.L. 754. R.B. 765.2

REPEAT SECTION

