



COMPENSATED
ACOUSTIC VELOCITY
LOG

2" = 100'

COMPANY REICHHOLD ENERGY CORP.
WELL COLUMBIA CO. NO. 5

FIELD NEHALEM BASIN
County COLUMBIA State OREGON

COMPANY REICHHOLD ENERGY CORPORATION
WELL COLUMBIA COUNTY NO. 5
FIELD NEHALEM BASIN

COUNTY COLUMBIA STATE OREGON
Location 863' SOUTH & 1318' EAST
FROM NORTHWEST CORNER OF:
(W.B.M.) IEL
DIP

Sec. 10 Twp. 6N Rge. 5W
Elev. KB 947.62 GL 936.2
Permanent Datum KB OR 11.42 R. Above Perm. Datum
Logging Measured From KB
Date 6-28-79

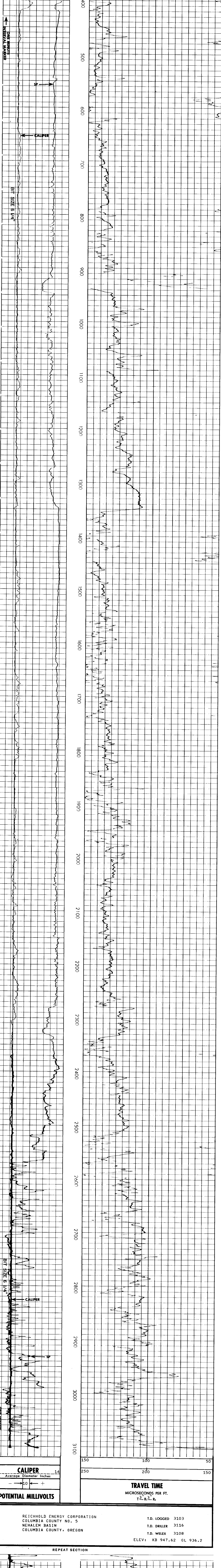
Run No. 0NE
Depth-Driller 3108
Depth-Welex 3103
Btm. Log Liter. 400
Log Log Liter. 400 @ 399
Casing-Driller 400 @ 399
Casing-Welex 614
Blow 614
Type Fluid in Hole L1610 SULF

Dens. Fluid 7.3 1.43
Dens. Solids 15.0
Sources of Spms. P17 15.0 MI
R @ Mass. Temp. 4.10 @ 83 F
R @ Mass. Temp. 4.10 @ 72 F
R @ Mass. Temp. 5.02 @ 72 F
Source R. R. MEASURED
R @ BHT 3.20 @ 119F
R @ BHT 6.12 @ 119F
Time Since Circ. 119F @ BHT
Max. Pac. Temp. 94.30 (IND) IND
Emul. Location KENNEDY
Recorded By MCJURRIE, CLARE, BRUER, FRY
Witnessed By

Service Ticket No. 048884 Remarks:

Change in Mud Type or Additional Samples		SCALE CHANGES			
Date	Mud Type	Type Log	Depth	Scale Up Hole	Scale Down Hole
Type Fluid in Hole					
Dens.	Visc.				
ph	Fluid Loss				
Source of Sample		EQUIPMENT DATA			
R @ Meas. Temp.		Run No.	Tool Type and No.	Pad Type	Tool Position
R @ Meas. Temp.		0NE	C/AVL 13913	FREE	Other
R @ Meas. Temp.					
Source: R _m R _{nc}					
R @ BHT					
R _m BHT	3.20 @ 119F				
R _{nc} BHT	2.58 @ 119F				
R _{nc} BHT	3.12 @ 119F				

Welex does not guarantee the accuracy of any interpretation of log data, conversion of log data to physical rock parameters, or recommendations which may be given by Welex personnel or which may appear on the log or in any other form. Any user of such data, interpretations, conversions, or recommendations agrees that Welex is not responsible, except where due to gross negligence or willful misconduct, for any loss, damages, or expenses resulting from the use thereof.



REICHHOLD ENERGY CORPORATION
COLUMBIA COUNTY NO. 5
NEHALEM BASIN
COLUMBIA COUNTY, OREGON

T.D. LOGGED 3103
T.D. DRILLER 3116
T.D. WELEX 3108
ELEV: KB 947.62 GL 936.2

