



COMPANY REICHHOLD ENERGY CORPORATION
 WELL COLUMBIA COUNTY NO. 6 REDRILL NO. 1
 FIELD NEHALEM BASIN
 COUNTY COLUMBIA STATE OREGON
 Location 689° SOUTH & 66° WEST OF CENTER OF: (W. B. & M.)
 Other Services: CAVI DIP LOG

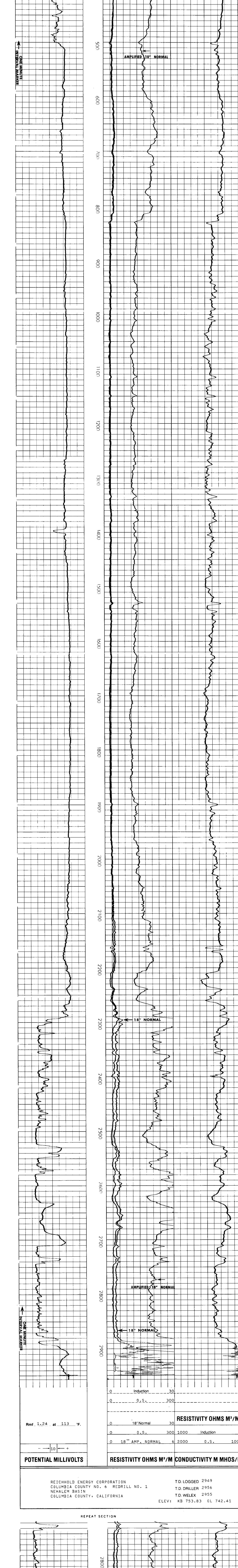
COMPANY REICHHOLD ENERGY CORPORATION
 CORP.
 WELL COLUMBIA COUNTY NO. 6
 R/D NO. 1
 FIELD NEHALEM BASIN
 COUNTY COLUMBIA STATE OREGON
 Location 689° SOUTH & 66° WEST OF CENTER OF: (W. B. & M.)
 Other Services: CAVI DIP LOG

Payment Datum: KB 0R 11.42ft Above Perm Datum
 Log Measured From: KB 0L 742.41
 Drilling Measured From: KB 0L 742.41
 Date: B-3-79
 Run No: ONE
 Depth-Driller: 2956
 Depth-Welex: 2955
 Bitm Log Inter: 2949
 Top Log Inter: 492 @ 401
 Casing-Driller: 7 @ 401
 Casing-Welex: 402

Type Fluid in Hole: CAUSTIC
 Bitsize: 9-BLIXIN
 Dens 1 Wt%: 6 1/4
 Dens 1 Wt%: 14
 Dens 1 Wt%: 10.5 @ 1.1 ml
 Spm. Loss: 2.03 @ 88F
 Spm. Loss: 2.04 @ 69F
 Spm. Loss: 2.32 @ 68F
 Spm. Loss: MEASURED
 R @ BHT: 1.58 @ 113F
 R @ BHT: 1.24 @ 113F
 R @ BHT: 1.39 @ 113F
 Time Since Circ: 3 HOURS
 Max. Rec. Temp: 113F @ BHT
 Equip. Location: 9430 I WILND
 Witnessed By: KENNEDY
 Recorded By: BRUER

Change in Mud Type or Additional Samples		SCALE CHANGES	
Date	Sample No.	Type Log	Scale Up Hole
			Scale Down Hole
Type Fluid in Hole			
Dens Visc			
pH Fluid Loss			
Source of Sample			
EQUIPMENT DATA			
R ₁ @ Meas. Temp	@	F	Run No. Tool Type and No. Pad Type Tool Position Other
R ₂ @ Meas. Temp	@	F	ONE TEL 18850 FREE
R ₃ @ Meas. Temp	@	F	
Source: R ₁ R ₂ R ₃			
R ₁ @ BHT		F	
R ₂ @ BHT		F	
R ₃ @ BHT		F	

Welex does not guarantee the accuracy of any interpretation of log data, conversion of log data to physical rock parameters, or recommendations which may be given by Welex personnel or which may appear on the log or in any other form. Any user of such data, interpretations, conversions, or recommendations agrees that Welex is not responsible except where due to gross negligence or willful misconduct, for any loss, damages, or expenses resulting from the use thereof.



REICHHOLD ENERGY CORPORATION
 COLUMBIA COUNTY NO. 6 REDRILL NO. 1
 NEHALEM BASIN
 COLUMBIA COUNTY, CALIFORNIA

T.D. LOGGED 2949
 T.D. DRILLER 2956
 T.D. WELEX 2955
 ELEV: KB 753.83 EL 742.41

REPEAT SECTION

