

COMPENSATED  
ACOUSTIC VELOCITY  
LOG

COMPANY REICHHOLD ENERGY CORPORATION  
 WELL COLUMBIA COUNTY NO.6 REDRILL NO.2  
 FIELD NEHALEM BASIN  
 COUNTY COLUMBIA STATE OREGON  
 LOCATION SOUTH & 66' WEST OF THE CENTER OF SECTION: TEL  
 Sec. 10 Twp. 6N Rge. 5W  
 Permament Datum K. B. Elev. KB 753.83  
 Log Measured from K. B. D.F. 142.41  
 Drilling Measured from K. B. G.L. 142.41  
 Date 8-9-79  
 Run No. ONE  
 Depth-Driller 2620  
 Depth-Welex 2624  
 Bit Log Meter 684  
 Core Log Driller 703  
 Core Log Meter 403  
 Casing - Welex 6.374  
 Bit Size 6.374  
 Type Fluid in Hole CAUSTIC  
 Density 79 1.40  
 pH 14.8 ml  
 Source of Sample CIRCULATED  
 R @ Meas. Temp. 1.98 @ 84 F  
 R @ Meas. Temp. 1.66 @ 82 F  
 R @ Meas. Temp. 2.27 @ 83 F  
 Source H<sub>2</sub>O MEASURED  
 R @ BHT 1.45 @ 115 F  
 Time Since Circ. 3 HRS.  
 Max. Fric. Temp. 115 F @ BHT  
 Equip. Location 9430 1 WOODLAND  
 Recorded By DOVE  
 Witnessed By MCBURNIE CLARE

Fold Here

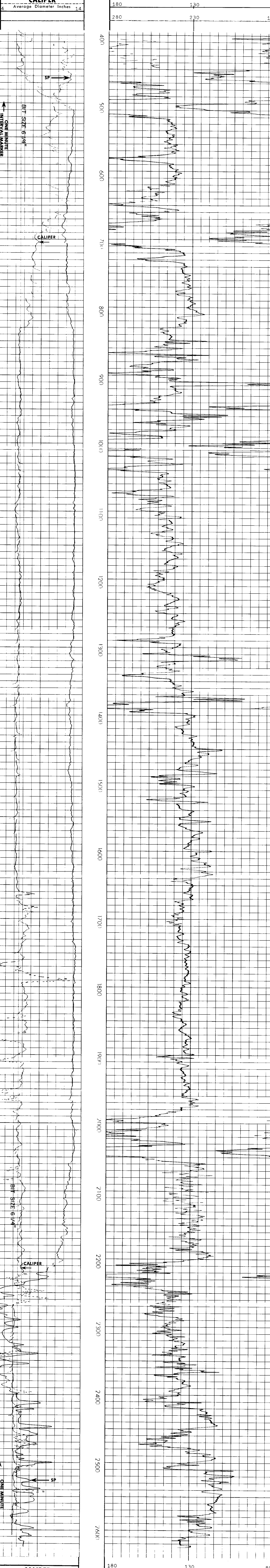
Service Ticket No. 049037 Remarks

Change in Mud Type or Additional Samples		SCALE CHANGES		
Date	Sample No.	Type Log	Depth	Scale Down Hole

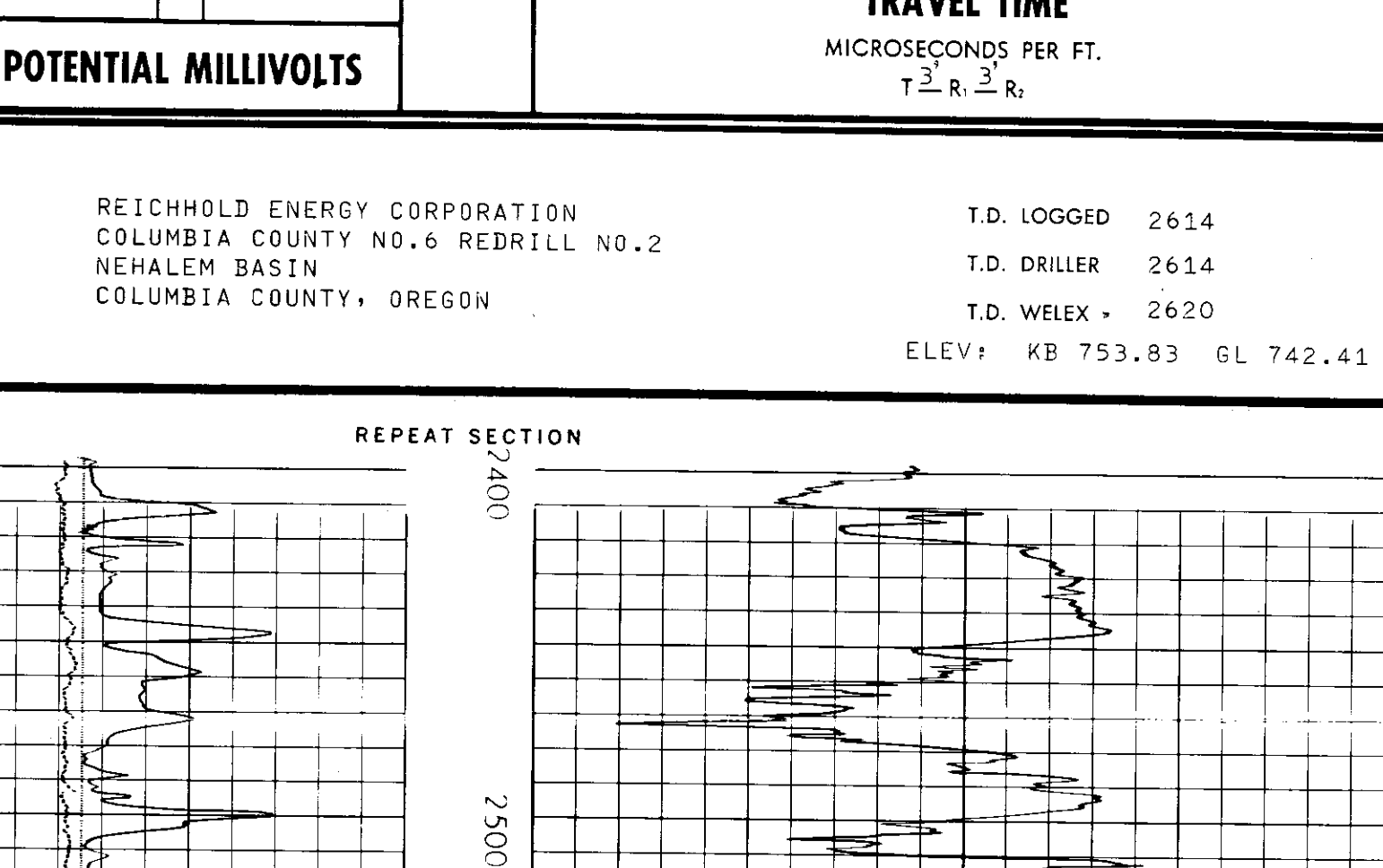
Type Fluid in Hole		EQUIPMENT DATA			
Dens.	Visc.	Run No.	Tool Type and No.	Pad Type	Tool Position
		ONE	VEL-15062	FREE	6 1/4 HOLE

Welex does not guarantee the accuracy of any interpretation of log data, conversion of log data to physical rock parameters, or recommendations which may be given by Welex personnel which may appear on the log or any other form. Any use of such data, interpretations, conversions, or recommendations agrees that Welex is not responsible except where due to gross negligence or willful misconduct for any loss, damages or expenses resulting from the use thereof.

2" = 100'



REPEAT SECTION



REICHHOLD ENERGY CORPORATION  
 COLUMBIA COUNTY NO.6 REDRILL NO.2  
 NEHALEM BASIN  
 COLUMBIA COUNTY, OREGON

T.D. LOGGED 2614  
 T.D. DRILLER 2614  
 T.D. WELEX 2620  
 ELEV: KB 753.83 GL 742.41