

RADIOACTIVITY LOG

5"=100'

COMPANY REICHHOLD ENERGY CORPORATION

WELL COLUMBIA COUNTY, NO.6 REDRILL NO.2

FIELD NEHALEM BASIN

COUNTY COLUMBIA STATE OREGON

COMPANY REICHHOLD ENERGY CORPORATION
CORPORATION
COLUMBIA COUNTY
NO.6 R/D NO.2
FIELD NEHALEM BASIN
County COLUMBIA State OREGON

Location
689' SOUTH & 66' WEST OF THE
CENTER OF SECTION: (N.B. & M.)
Sec. 10 Twp 6N Rge 5W

Other Services:
TEL MSG
DIP PERF.
C/AVL

Permanent Datum: 6-L. Elev. 742.41
Log Measured from: K.B. OR 11.42 Ft. Above Perm. Datum
Drilling Measured from: K.B.

Elev: K.B. 753.83
Df. 742.41
G.L. 742.41

Date	8-13-79
Run No.	ONE
Type Log	NEUTRON
Depth- Driller	2508
Depth- Welex	2512
Bottom Logged Interval	2506
Top Logged Interval	2150
Type Fluid In Hole	SALT WATER
Solmity, PPM Cl.	N/A
Density	N/A
Level	FULL
Max. rec. temp. deg. F.	115
Operating Rig Time	N/A
Recorded By	R. CLARK
Witnessed By	W. MCBURNE

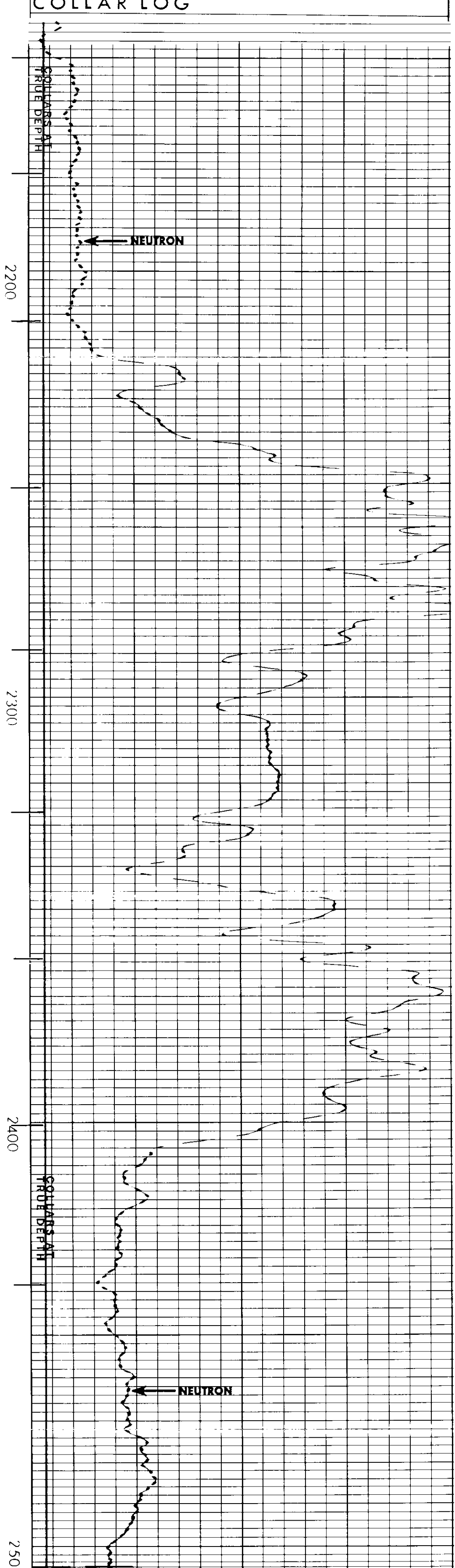
Fold Here

Service Ticket No. 049002 Remarks:

5" = 100'

NEUTRON COLLAR LOG

COUNT RATE INCREASES



NEUTRON COLLAR LOG

COUNT RATE INCREASES

REICHHOLD ENERGY CORPORATION
COLUMBIA COUNTY NO.6 REDRILL NO.2
NEHALEM BASIN
COLUMBIA COUNTY, OREGON

T.D. LOGGED 2506
T.D. DRILLER 2508
T.D. WELEX 2512
ELEV: KB 753.82 GL 742.41

REPEAT SECTION

