



INDUCTION • ELECTRIC LOG

2" = 100'

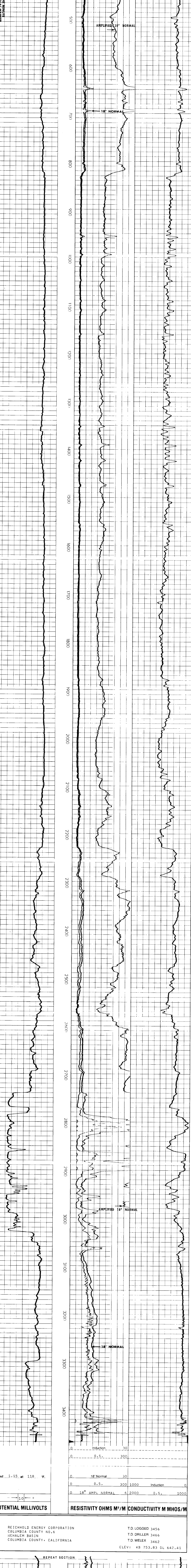
COMPANY REICHHOLD ENERGY CORPORATION  
 COLUMBIA COUNTY  
 NO. 6  
 FIELD NEHALEM BASIN  
 COUNTY COLUMBIA STATE OREGON  
 Location 689' SOUTH & 66' WEST OF THE CENTER OF SECTION 18, T. 8. & N. 1  
 COUNTY COLUMBIA STATE OREGON  
 WELL COLUMBIA COUNTY NO. 6  
 FIELD NEHALEM BASIN  
 COUNTY COLUMBIA STATE OREGON

Formed Datum 6-L- BR 11.42 Ft. Above Perm. Datum  
 Log Measured From K.B.  
 Casing Measured From K.B.  
 Date 7-26-79  
 Run No. ONE  
 Depth-Driller 3466  
 Depth-Welex 3466  
 Pipe Log Meter 3456  
 Casing-Welex 402  
 Bit Size 6 1/4

Type Fluid in Hole CAUSTIC  
 Density 7.4 @ 1.40  
 pH Fluid Loss 7.5 @ 1.40  
 R<sub>1</sub> @ Meas. Temp. 1.10 @ 71 F  
 R<sub>2</sub> @ Meas. Temp. 2.00 @ 66 F  
 R<sub>3</sub> @ Meas. Temp. 2.74 @ 66 F  
 Source R<sub>1</sub> Measured  
 R<sub>1</sub> @ BHT 1.26 @ 118 F  
 R<sub>2</sub> @ BHT 1.18 @ 118 F  
 R<sub>3</sub> @ BHT 1.53 @ 118 F

Change in Mud Type or Addition Samples	Type Log	Depth	Scale Up Hole	Scale Down Hole
Date Sample No.				
Depth-Driller				
Type Fluid in Hole				
Dens. Visc.				
ph Fluid Loss				
Source of Sample				
R <sub>1</sub> @ Meas. Temp.	F			
R <sub>2</sub> @ Meas. Temp.	F			
R <sub>3</sub> @ Meas. Temp.	F			
Source R <sub>1</sub> R <sub>2</sub> R <sub>3</sub>				
R <sub>1</sub> @ BHT	F			
R <sub>2</sub> @ BHT	F			
R <sub>3</sub> @ BHT	F			

Welex does not guarantee the accuracy of any interpretation of log data, comparison of log data to physical rock parameters, or recommendations which may be given by Welex personnel or when the log is used for any other purpose. Welex shall not be liable for any damages or expenses resulting from the use thereof.



REICHHOLD ENERGY CORPORATION  
 COLUMBIA COUNTY NO. 6  
 NEHALEM BASIN  
 COLUMBIA COUNTY, CALIFORNIA

T.D. LOGGED 3456  
 T.D. DRILLER 3466  
 T.D. WELEX 3462  
 ELEV: KB 753.83 GL 642.41

