



# COMPENSATED DENSITY LOG NEUTRON

COMPANY: REICHHOLD ENERGY CORPORATION  
 WELL: COLUMBIA COUNTY NO. 10  
 FIELD: MIST-NEHALEM BASIN  
 COUNTY: COLUMBIA STATE: OREGON  
 Location: 1976 NORTH & 1065 EAST OF SOUTHWEST CORNER OF:  
 Other Services: D/G, D/P, D/P

Run No: ONE  
 Date: 10-5-79  
 Log Measured From: KB  
 Drilling Measured From: GL  
 Permanent Datum: GL  
 Elev.: 1089.22  
 Elev.: 1099.72  
 D/G: 1089.22

Depth-Driller: 2983  
 Depth-Water: 2979  
 Rim Log Int.: 440 @ 437  
 Top Log Int.: 440 @ 437

Bit Size: 6 1/4  
 Casing: 4.40 @ 4.37  
 Type Fluid in Hole: LIQUID SULF

Dens. Fluid: 7.9 @ 1.38 ml  
 P.M. Fluid Loss: 0.9 @ 0.0 ml  
 R. @ Max Temp: 3.92 @ 60 °F  
 R. @ Max Temp: 3.57 @ 60 °F  
 R. @ Max Temp: 3.49 @ 60 °F  
 Source R.: R. (HEALTHY)  
 R. @ BHT: 2.16 @ 1097 °F  
 Time Since Circ: 24 HOURS  
 LITHO: 8596 @ WELLEX  
 ELEM: 100E @ WELLEX  
 Recorded by: MC-BURRILL, FRY

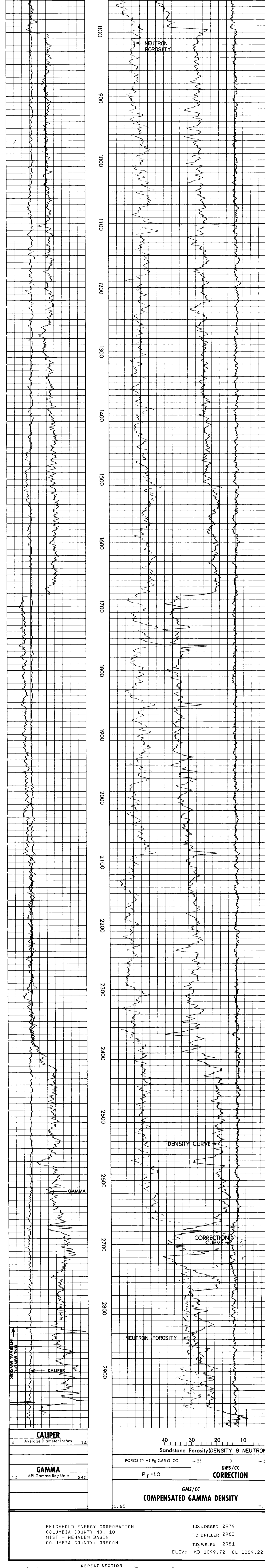
GAMMA RAY				GAMMA DENSITY			
Run No.	ONE	Run No.	ONE				
Tool Model No.	102-A	Log Type	COMP. DENS.				
Diameter	3 5/8"	Tool Model No.	125				
Detector Model No.	102-A	Diameter	3 5/8"				
Type	SCINT.	Detector Model No.	127				
Length	N/A	Type	SCINT.				
Distance to Source	24.0"	Length	N/A				
		Source Model No.	DCS				
		Serial No.	DCS-81				
		Spacing	N/A				
		Type	CS-137				
		Strength	500 mc				

GENERAL				LOGGING DATA				GAMMA DENSITY			
Hoist Truck No.	8655	Run	ONE	Run	ONE	Run	ONE	Run	ONE	Run	ONE
Instrument Truck No.	8586	From	2981	From	2981	From	2981	From	2981	From	2981
Tool Serial No.	20099	To	440	To	440	To	440	To	440	To	440
MAND. NO.	20063	Speed	25	Sens.	200	Zero	2-L	Sens.	165-265	Zero	0.05
PAD NO.	20089	T.C.	1	Settings	200	Div. Lor R	20	Settings	1	Div. Lor R	0.05
		Sec	1	Units	per Log Div.	Units	per Log Div.	Units	per Log Div.	Units	per Log Div.

Reference Literature:

Service Ticket No. 049048 Remarks:

WELLEX does not guarantee the accuracy of any interpretation of log data, conversion of log data to physical rock parameters, or recommendations which may be given by WELLEX personnel or which may appear on the log or in any other form. Any user of such data, interpretations, conversions, or recommendations agrees that WELLEX is not responsible, except where due to gross negligence or willful misconduct, for any loss, damages, or expenses resulting from the use thereof.



REICHHOLD ENERGY CORPORATION  
 COLUMBIA COUNTY NO. 10  
 MIST - NEHALEM BASIN  
 COLUMBIA COUNTY, OREGON

T.D. LOGGED 2979  
 T.D. WELLEX 2983  
 T.D. WELLEX 2981  
 ELEV.: KB 1099.72 GL 1089.22

