



**DUAL INDUCTION  
GUARD LOG**

2" = 100'

COMPANY REICHOLD ENERGY CORPORATION  
WELL COLUMBIA COUNTY, 11-33  
FIELD MIST  
COUNTY COLUMBIA STATE OREGON  
FEB 24 1982  
Location 293' SOUTH & 524' EAST OF THE  
NORTHWEST CORNER OF:  
C/AVL

Sec. 33 Twp. 7N Rge. 5W  
Permament Datum G.L. Elev. 956.18  
Log Measured From K.B. Elev. 967.58  
Drilling Measured From K.B. Elev. 956.18  
Date 7-30-81  
Run No. ONE  
Depth - Driller 2737  
Depth - Welex 2739  
Btm. Log Inter. 410

Top Log Inter. 7 @ 398  
Casing - Driller 410  
Casing - Welex 410  
Bit Size 6 1/4  
Type Fluid in Hole LIGNOSULF.

Dens. Visc. 9.3 1.47  
pH | Fluid Loss 10 4.0ml  
Source of Sample CIRCULATED  
R<sub>s</sub> @ Meas. Temp. 4.00 @ 60 °F  
R<sub>m</sub> @ Meas. Temp. 3.80 @ 69 °F  
R<sub>s</sub> @ Meas. Temp. 4.25 @ 60 °F  
Source R<sub>s</sub> MEASURED  
R<sub>s</sub> @ BHT 2.18 @ 110F  
Time Since Circ. 2 1/2 HRS.  
Max. Race Temp. 110F @ BHT  
Equip. Location 85861 WOODLAND  
Recorded By J. PARMELEE  
Witnessed By W. BRUER

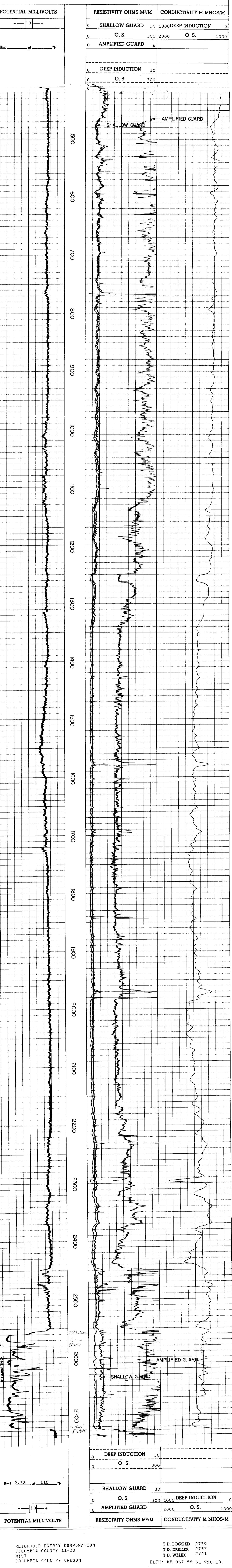
Service Ticket No 057053 Remarks

Change in Mud Type or Additional Samples		SCALE CHANGES	
Date	Sample No.	Type Log	Scale Up Hole
			Scale Down Hole
Depth - Driller			
Type Fluid in Hole			

EQUIPMENT DATA			
Run No.	Tool Type and No.	Pad Type	Tool Position
ONE	DIG		N/A

Dens.	Visc.	pH	Fluid Loss
9.3	1.47		4.0ml

Well does not guarantee the accuracy of any interpretation of log data, conversion of log data to physical rock parameters, or recommendations which may be given by Welex personnel or which may appear on the log or in any other form. Any use of such data, interpretations, conversions, or recommendations agrees that Welex is not responsible, except where due to gross negligence or willful misconduct, for any loss, damages, or expenses resulting from the use thereof.



REICHOLD ENERGY CORPORATION  
COLUMBIA COUNTY 11-33  
MIST  
COLUMBIA COUNTY, OREGON

T.D. LOGGED 2739  
T.D. DRILLER 2737  
T.D. WELEX 2741  
ELEV: KB 967.58 GL 956.18

