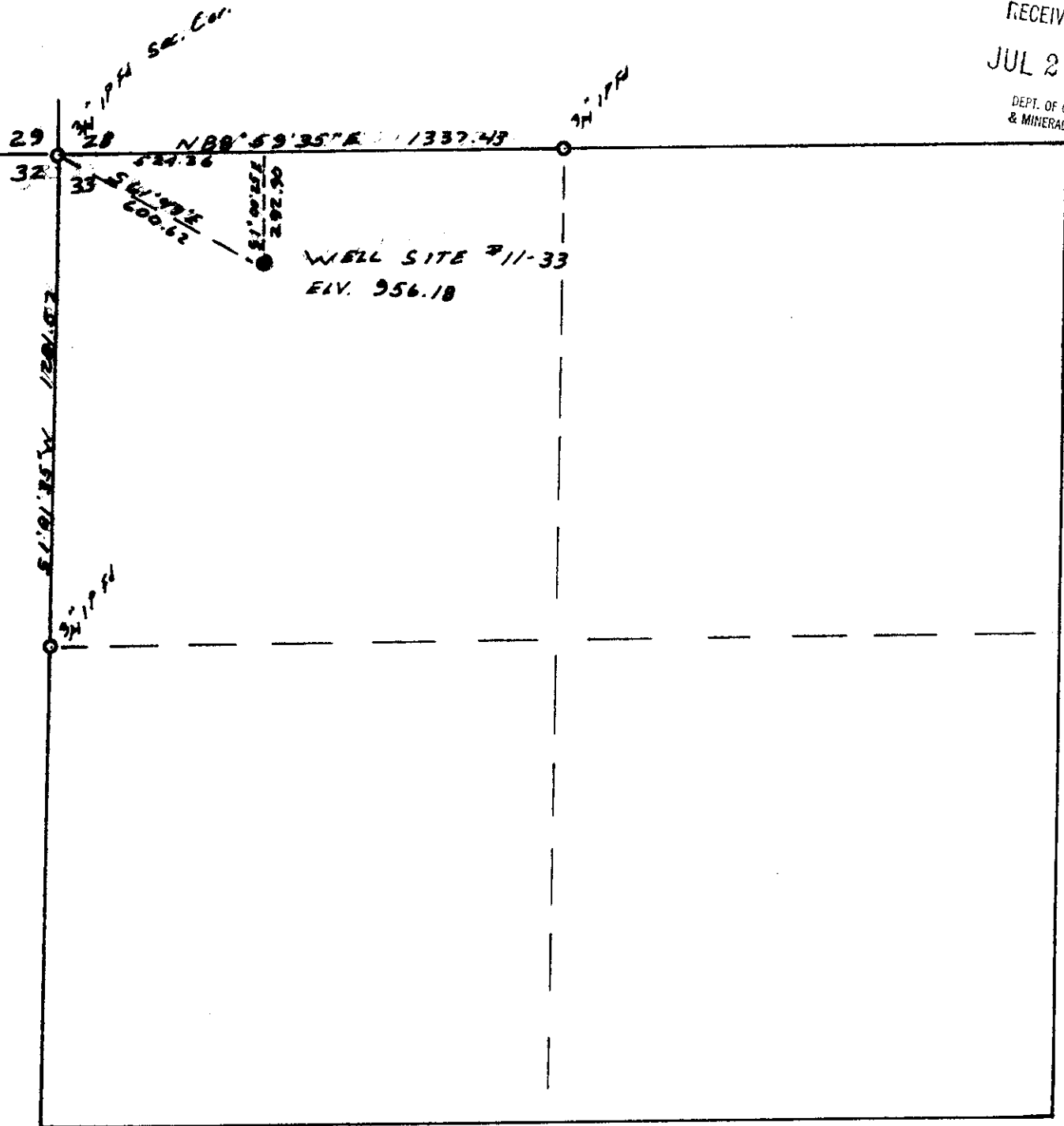


RECEIVED-PTLD  
JUL 20 1981

DEPT. OF GEOLOGY  
& MINERAL INDUS.

L-1520



NOTE: Elevation based on U.S.G.S.  
 B.M. #597 brass disc on the  
 N.E. Corner of the bridge approx.  
 .5 miles N.W. of Mist on the  
 Nicholas Highway, ELEV. 533.664

Reichhold Energy  
 Col. Co. 11-33

L-1520

11-33

BASIS OF BEARING \_\_\_\_\_

SURVEY FOR \_\_\_\_\_