

HORIZON

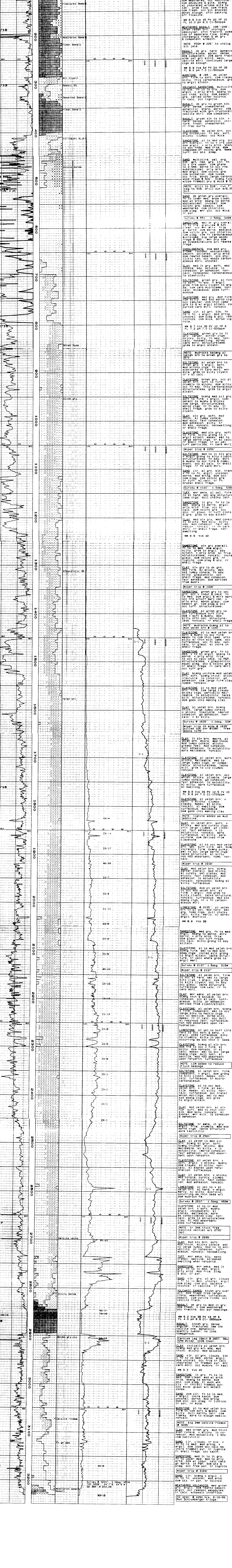
WELL LOGGING

Andrews May
California 93438
733-0872

| ABBREVIATIONS | SYMBOLS |
|---------------------------|--------------|
| CO Circulate Out | PEBBLES >2mm |
| LAT Logged After Trip | SAND |
| CG Connection Gas | SANDSTONE |
| TG Miper Gas | SILTSTONE |
| SG Trip Gas | MUDSTONE |
| SG Survey Gas | SHALE |
| NR No Returns | MARL |
| NR New Bit | CLAY |
| NR Miper Run | LOESITE |
| CORE INTERVAL | COLOSTONE |
| HOB (100,000# full scale) | LEWSTONE |
| PP Pump pressure | VLCAONICS |
| SPM Strokes per minute | TUFF |
| | BASALT |

COMPANY ENERFIN RESOURCES NORTHWEST
WELL LOCATION C.C. 11-34-75 (Stegosaur)
1034 2 1/2 E 55N 7 1/2 S R.M. corner Sec 34, T.7N, R.3E W.B. 64
X=1290081 Y=88821
Q=1952.7' KB 1562.7'
MISC. Columbia, Oregon
DATE June 11, 1999
LOGGING DATES June 11 to June 19, 1999
OPERATOR Enerfin Resources Northwest
GEOLOGIST Dave Huggins
DRILL REP. Ove Lucas-Production Specialists
CONTRACTOR Taylor Drilling Inc.
RIG #7
MUD COMPANY Jim Martin/Baker Chemical
MUD TYPE Gel/Accu-Gauge
LOGGING GEOLOGIST Bill Gilmour, Matt Carson
BIT SIZE 9.875 in to 5 1/8"
6.25 in to 3 23/64"
CASING 12.00 in to 30'
7.00 in to 518'

| DRILL RATE | LITH | MINERAL | GASES | CHROMATOGRAPH | REMARKS |
|------------|------|---------|-------|---------------|---------|
|------------|------|---------|-------|---------------|---------|



TO 3200' @ 0250 H= 6-10-99
Run Schumberger E-logs.