

COMPANY: Enerfin Resources Northwest
WELL: Columbia County 11-34-75 Stegosaur
FIELD: Mist Gas
COUNTY: Columbia **STATE: Oregon**

Schlumberger
Platform Express
Array Induction / BHC Sonic
Two Inch Correlation Print

LOCATION
 County: Columbia
 Field: Mist Gas
 Location: 10342 E & 55678 S / NW Cor
 Well: Columbia County 11-34-75 Steg
 Company: Enerfin Resources Northwest

LOGGING
 Log Measured From: Kelly Bushing
 Log Measured To: Kelly Bushing
 Log Interval: 10.0 ft above Perm. (Lith)
 Log Interval: 10.0 ft above Perm. (Lith)
 Log Interval: 10.0 ft above Perm. (Lith)

LOGGING
 Log Measured From: Kelly Bushing
 Log Measured To: Kelly Bushing
 Log Interval: 10.0 ft above Perm. (Lith)
 Log Interval: 10.0 ft above Perm. (Lith)
 Log Interval: 10.0 ft above Perm. (Lith)

LOGGING
 Log Measured From: Kelly Bushing
 Log Measured To: Kelly Bushing
 Log Interval: 10.0 ft above Perm. (Lith)
 Log Interval: 10.0 ft above Perm. (Lith)
 Log Interval: 10.0 ft above Perm. (Lith)

FINAL PRINT

OTHER SERVICES
 CS1
 CS2
 CS3
 CS4
 CS5

REMARKS - RUN NUMBER 1
 Neutron run without logging due to hole size
 Sonic and AIT run with 5' standoffs to minimize sticking

REMARKS - RUN NUMBER 2

MATRIX
 MOEN = 2.65 g/cc
 DTM = 36 uSec/ft
 Raymer-Hunt Porosity

YOUR CREW
 Ted Pearce

SERVICE ORDER #
 902454
 PRODUCER

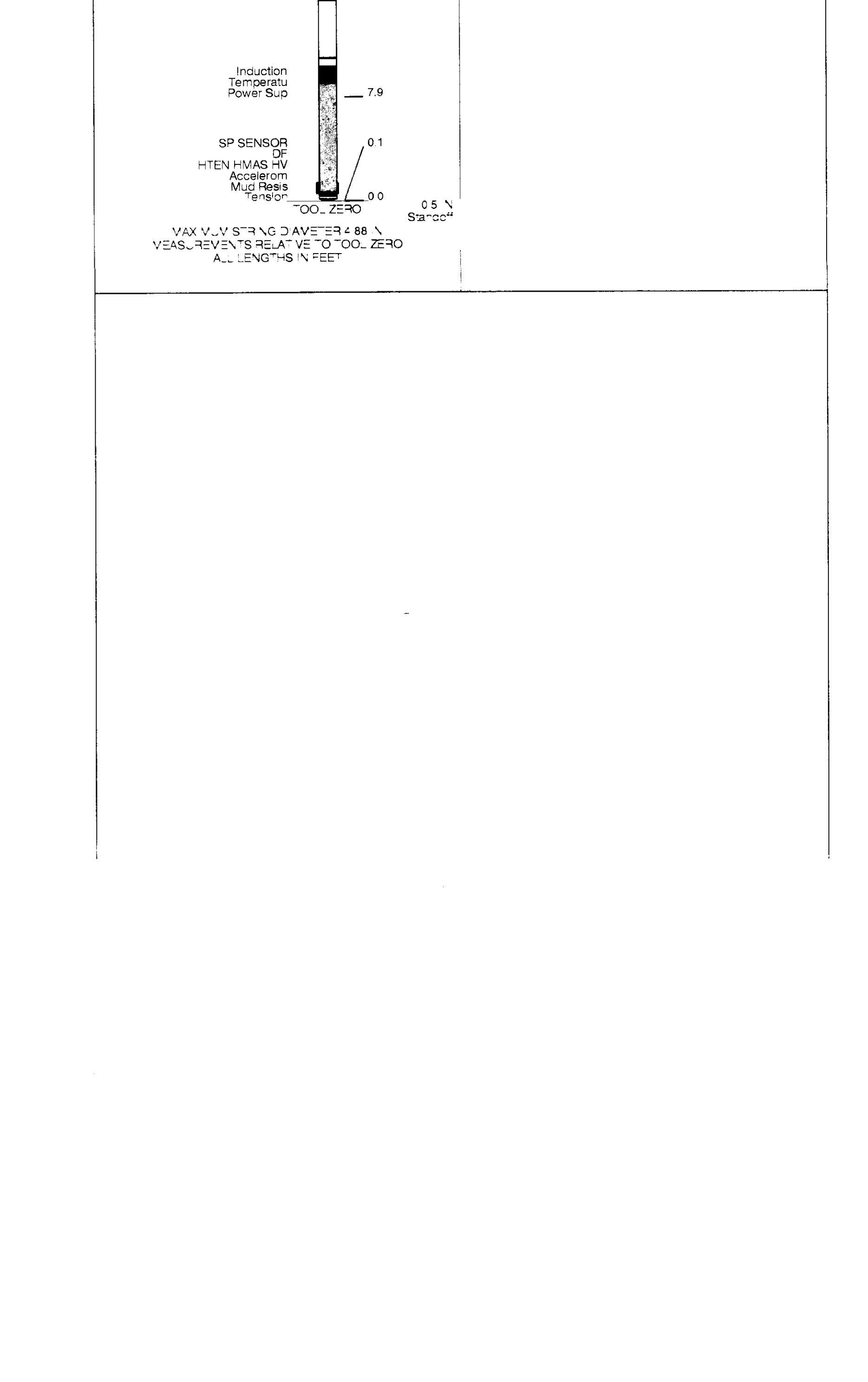
SERVICE ORDER #
 902454
 PRODUCER

INTERVAL
 S"AS" S"SP" S"AS" S"SP" S"AS" S"SP"

EQUIPMENT DESCRIPTION

SURFACE EQUIPMENT
 WTM (C)S:A

DOWNHOLE EQUIPMENT



MAX. Y-Y STANDING AVERAGE = 88
 VEAS. REVEN'S RELATIVE TO OOD. ZERO
 ALL LENGTHS IN FEET

Input DLIS Files

DEFAULT	HILTD.004	FN:3	PRODUCER	19-Jun-1999 13:17	3240.0 FT	63.5 FT
DEFAULT	HILTD.003	FN:2	PRODUCER	19-Jun-1999 12:55	3234.0 FT	2732.5 FT

Integrated Hole/Cement Volume Summary

Hole Volume = 613.33 R3
 Cement Volume = 488.96 R3
 Computed from 3230.0 ft to 493.5 ft

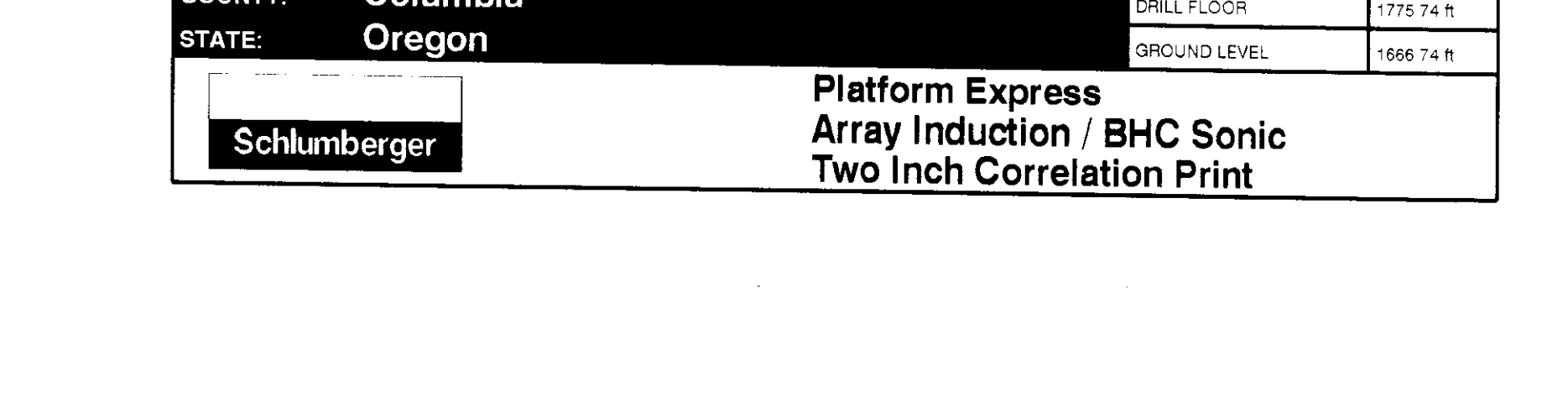
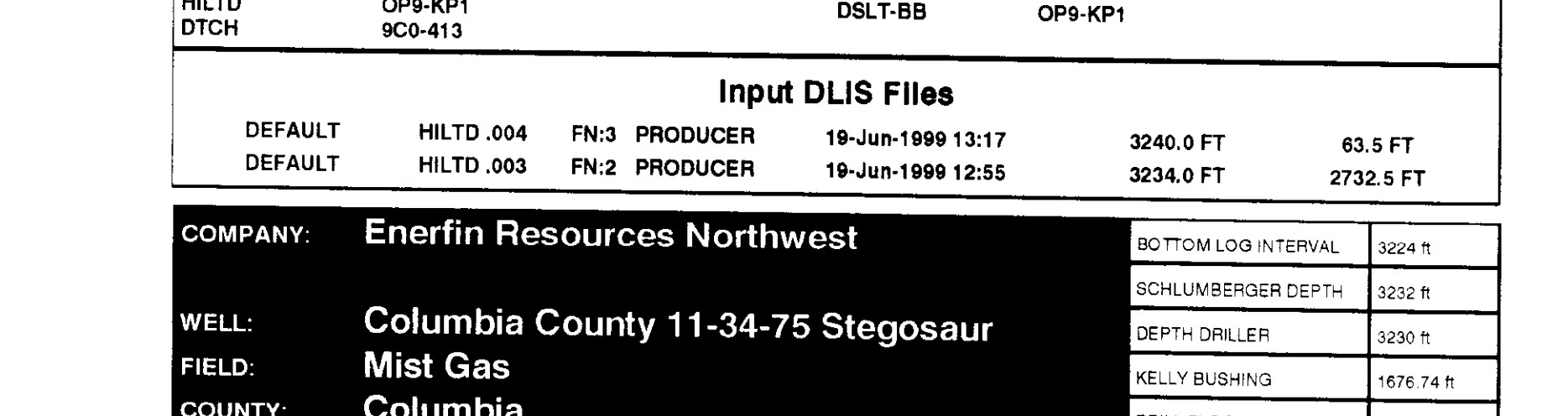
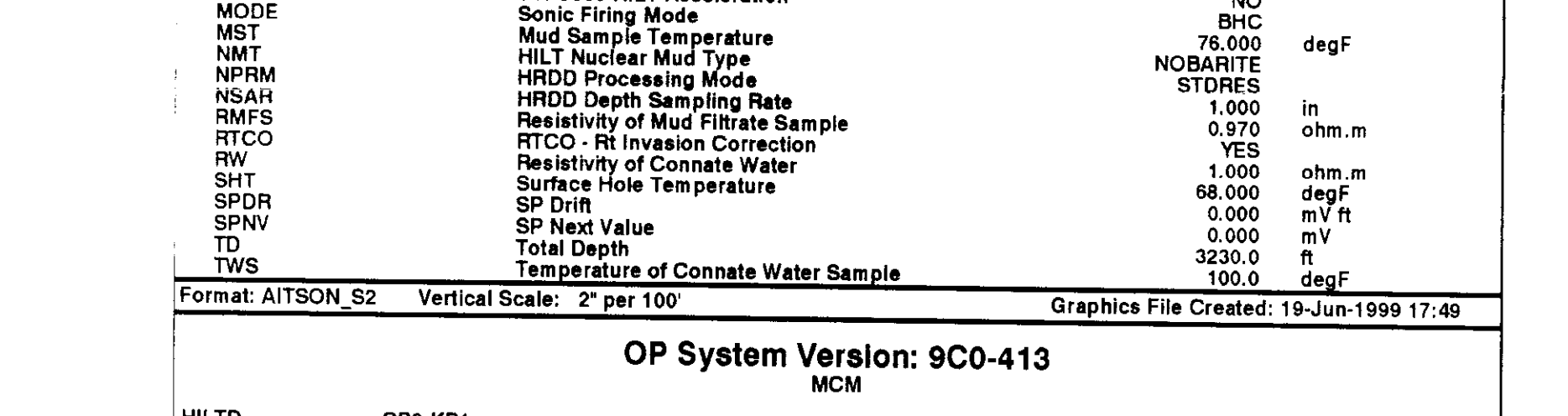
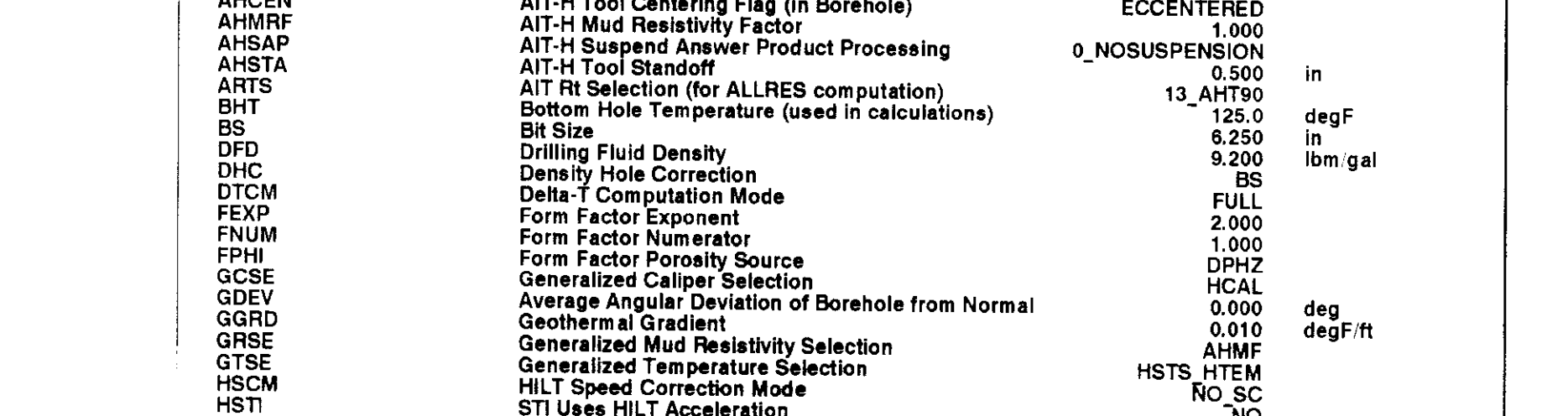
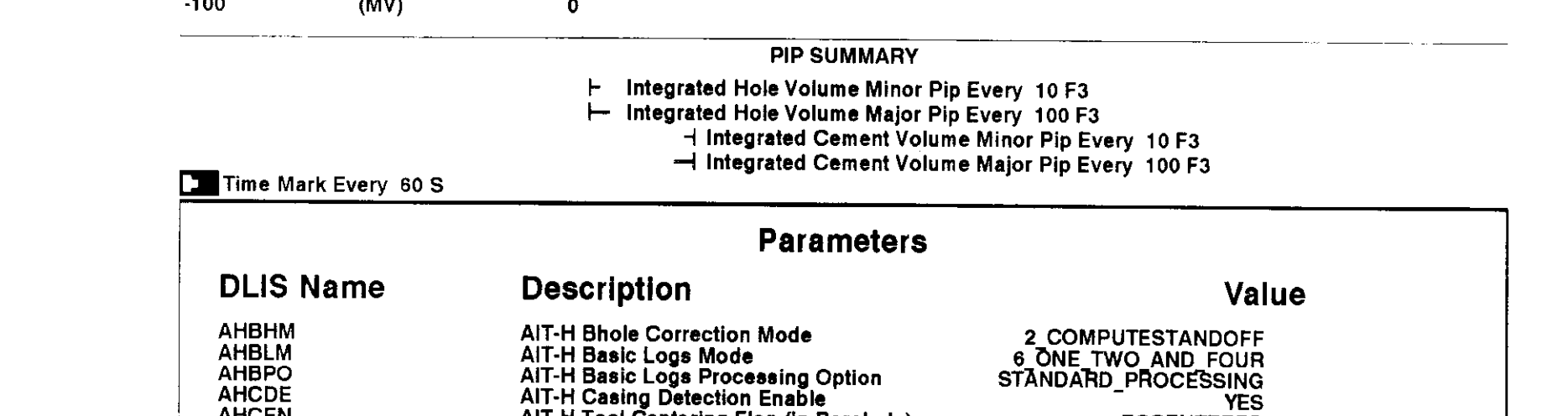
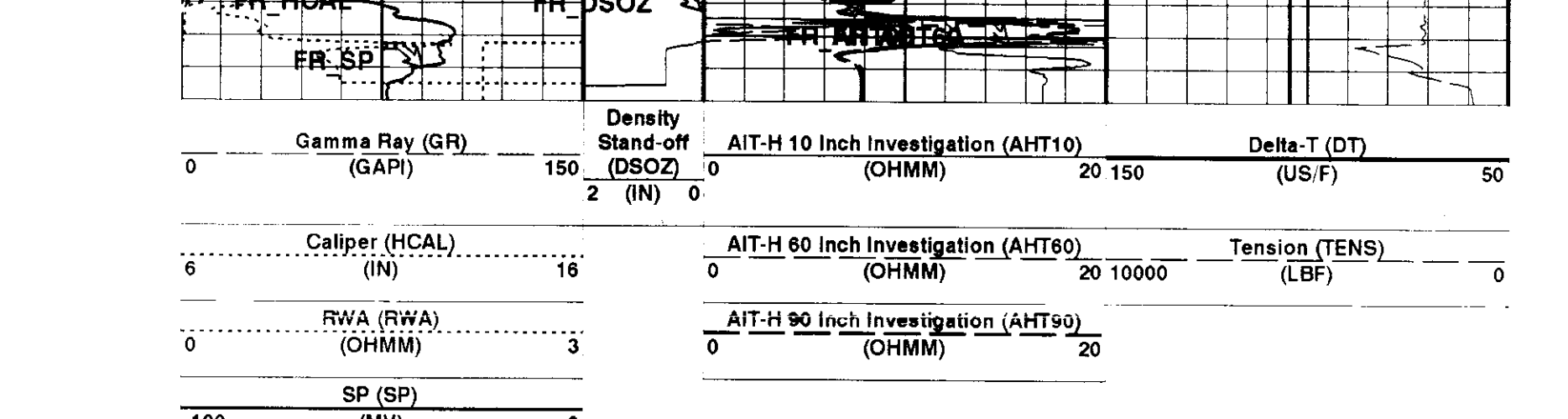
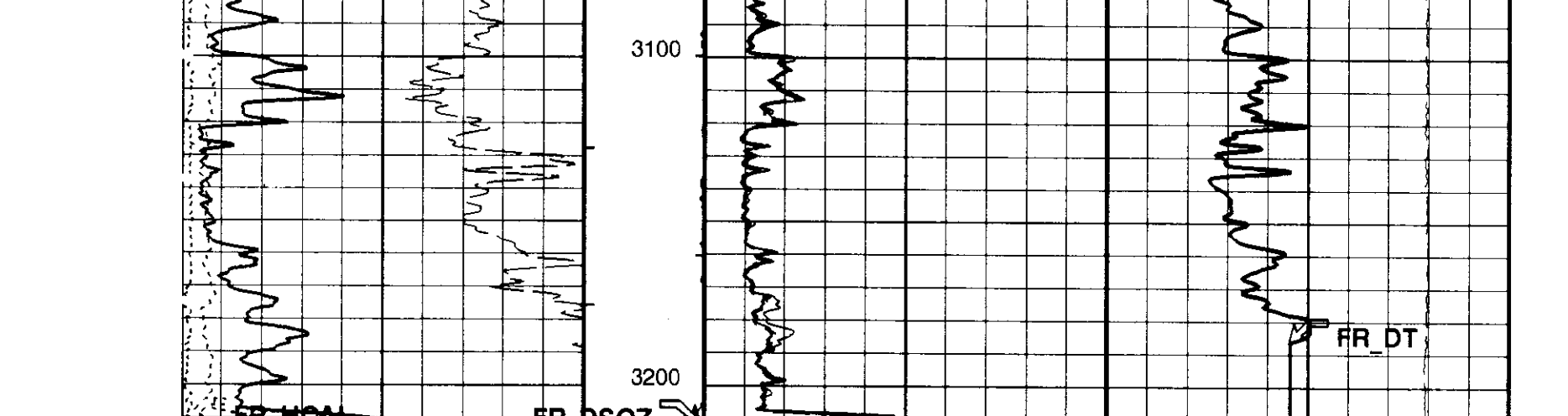
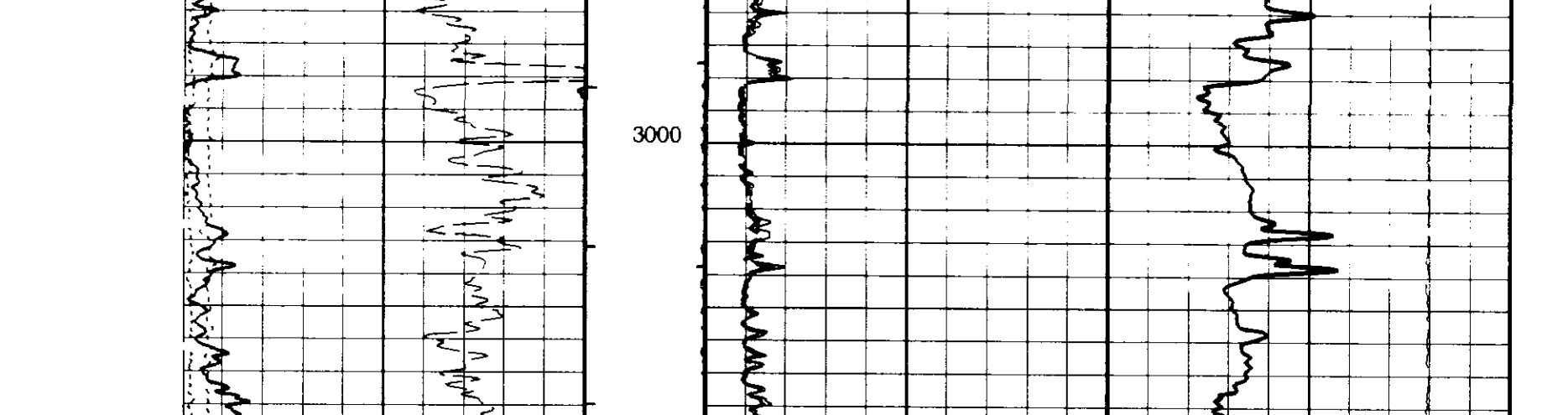
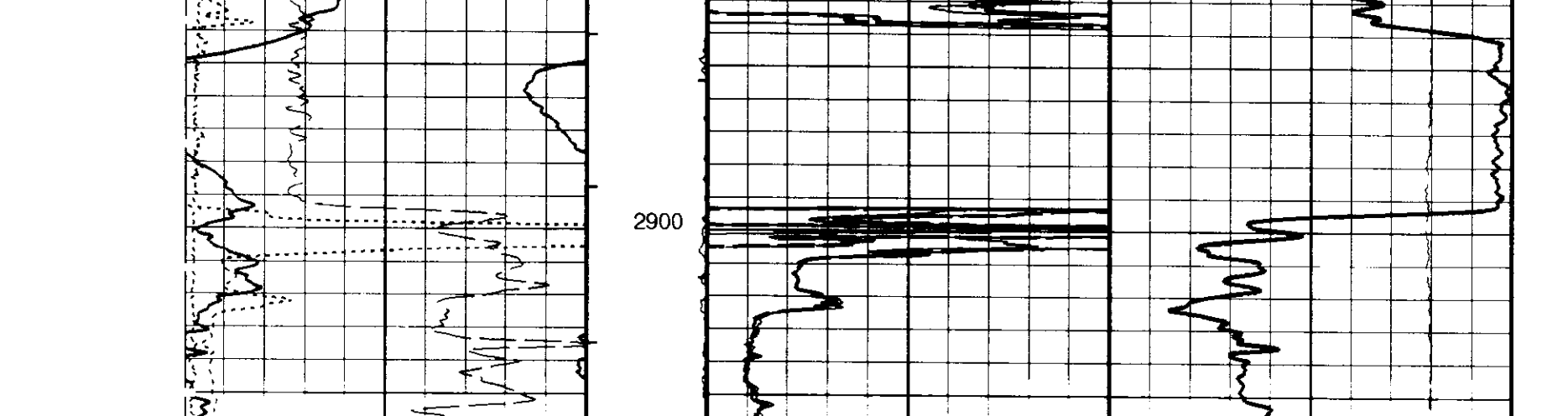
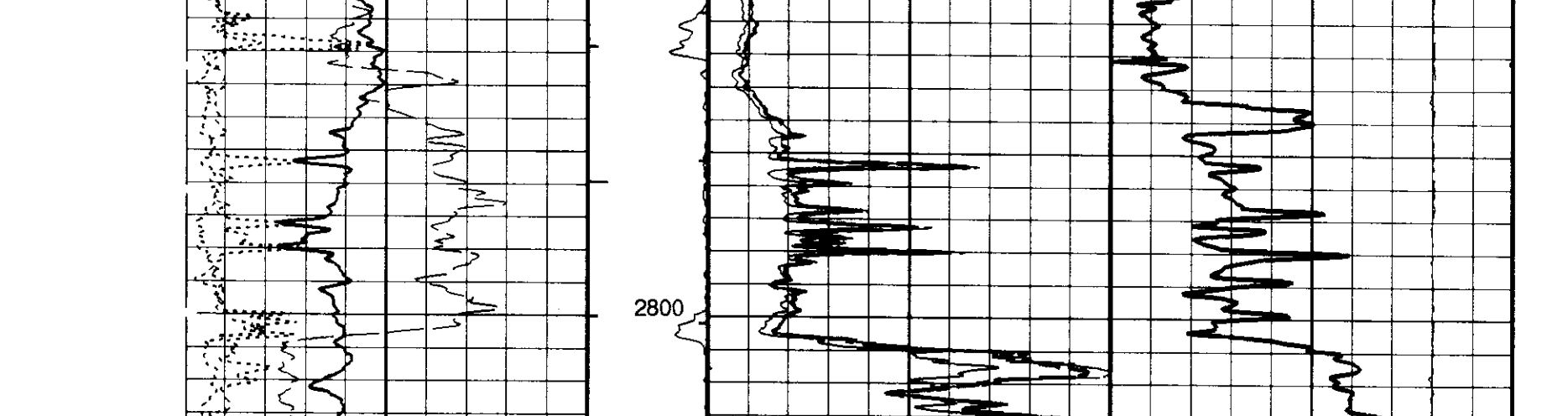
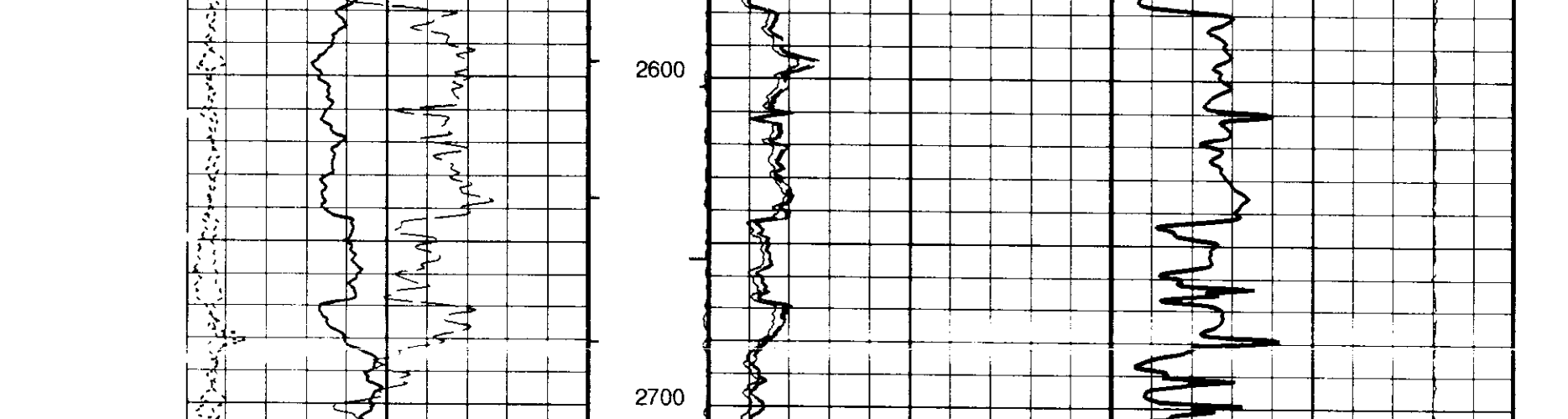
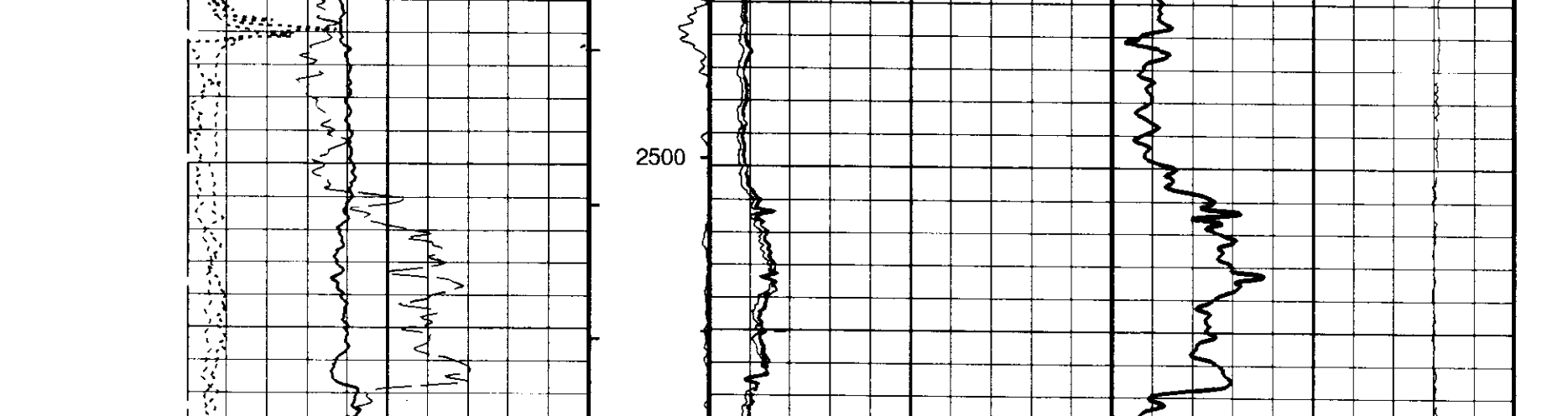
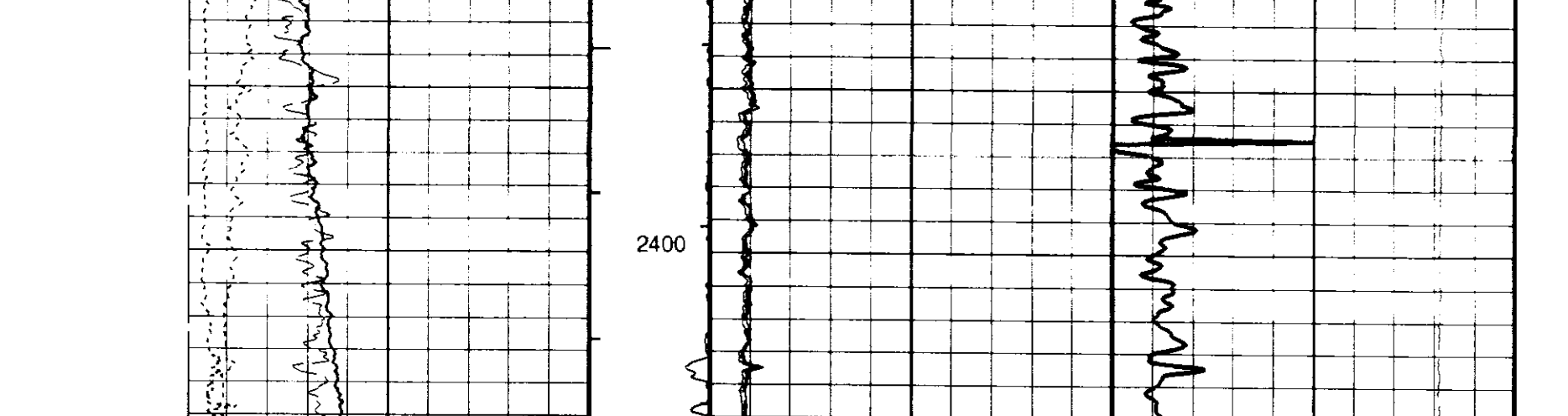
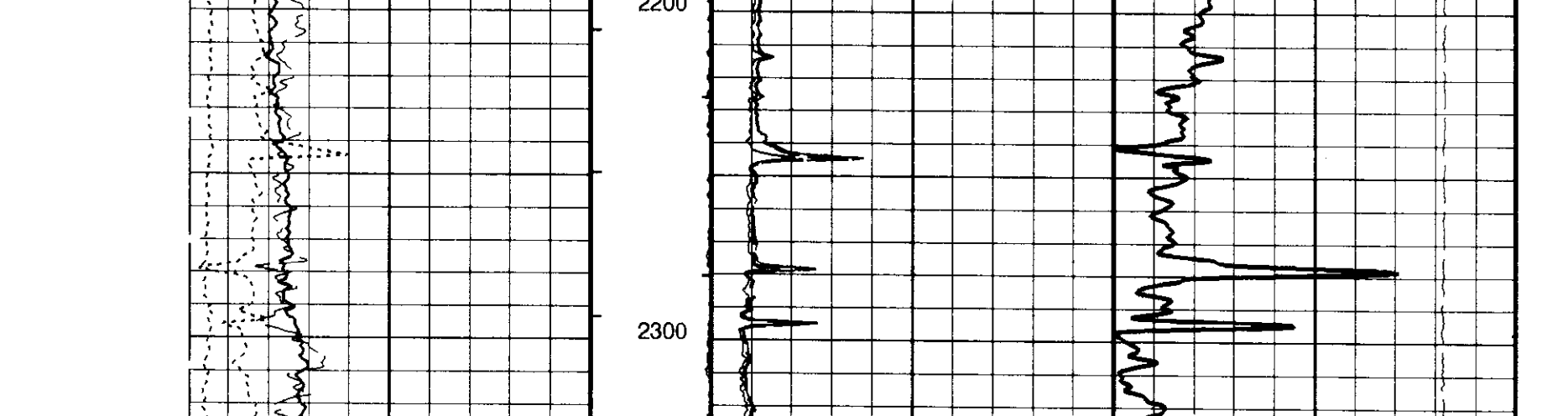
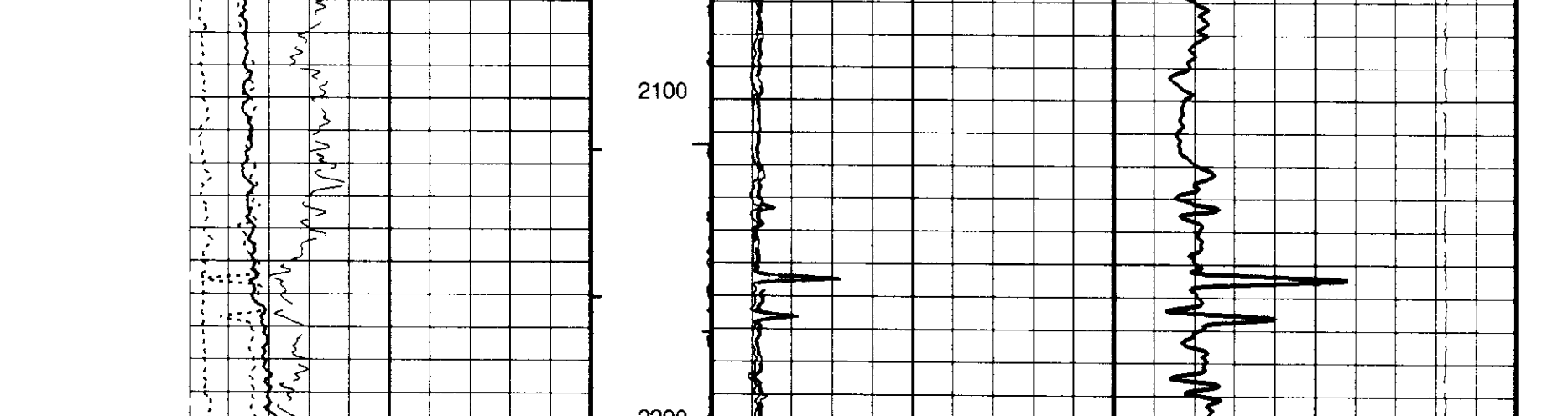
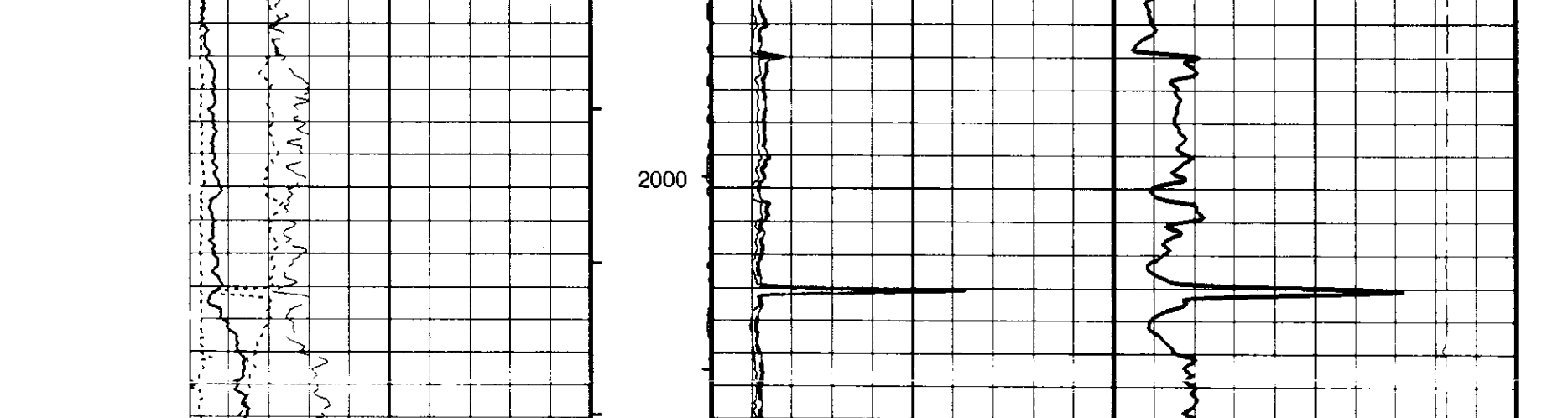
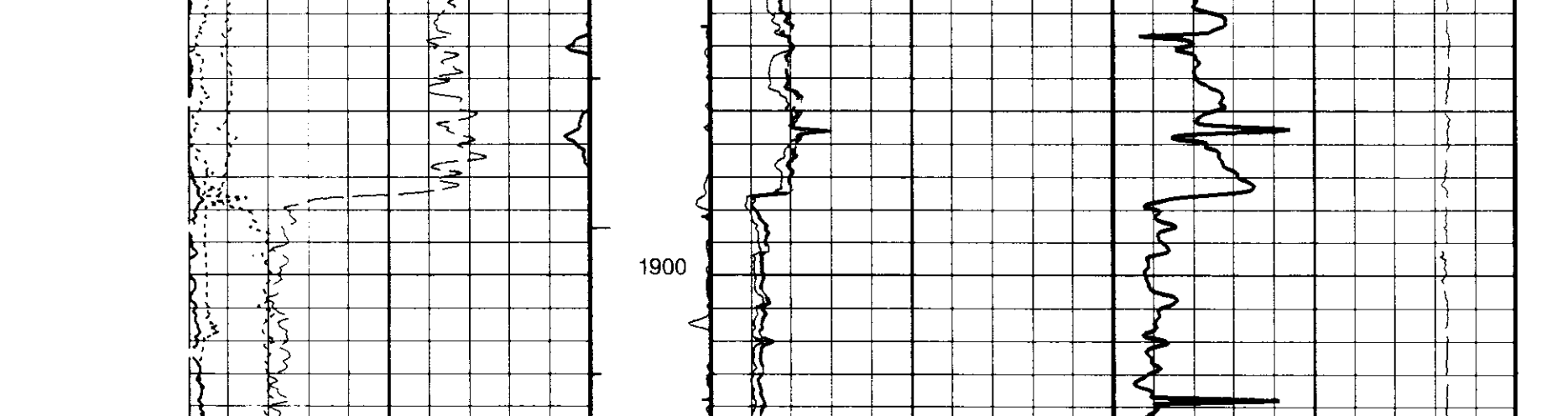
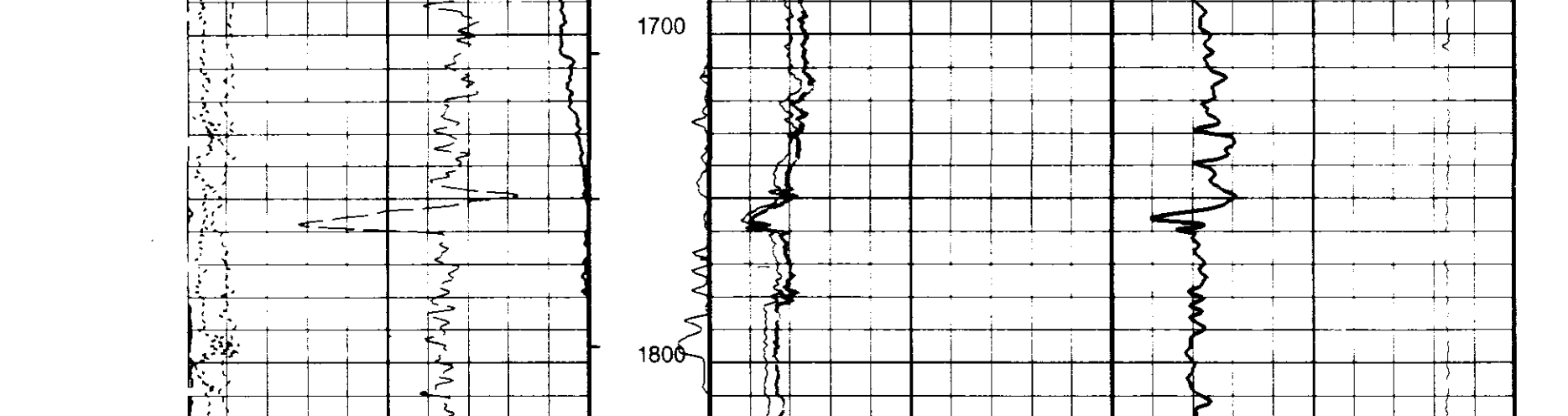
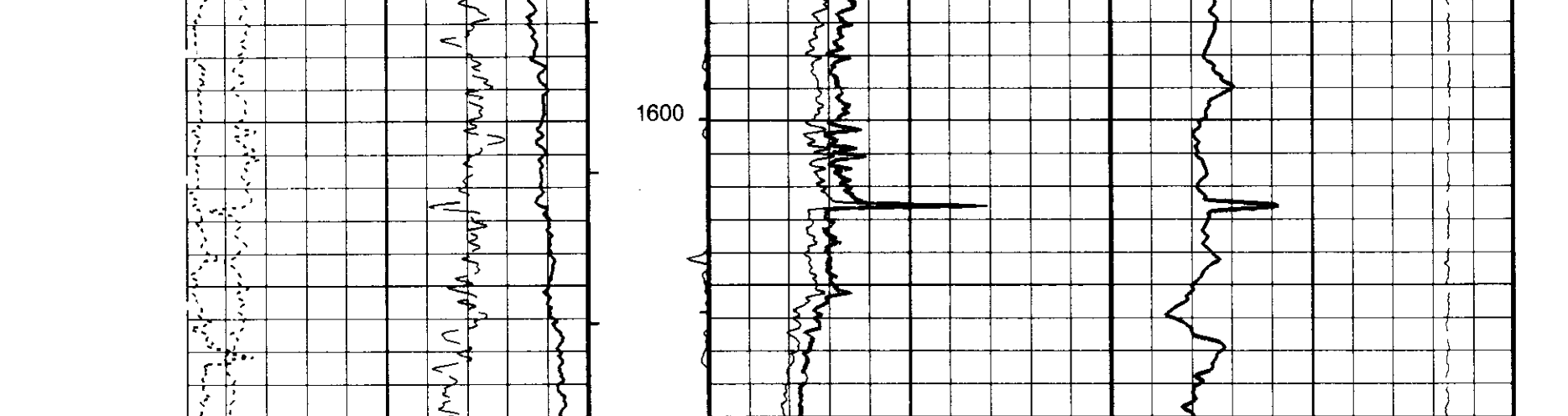
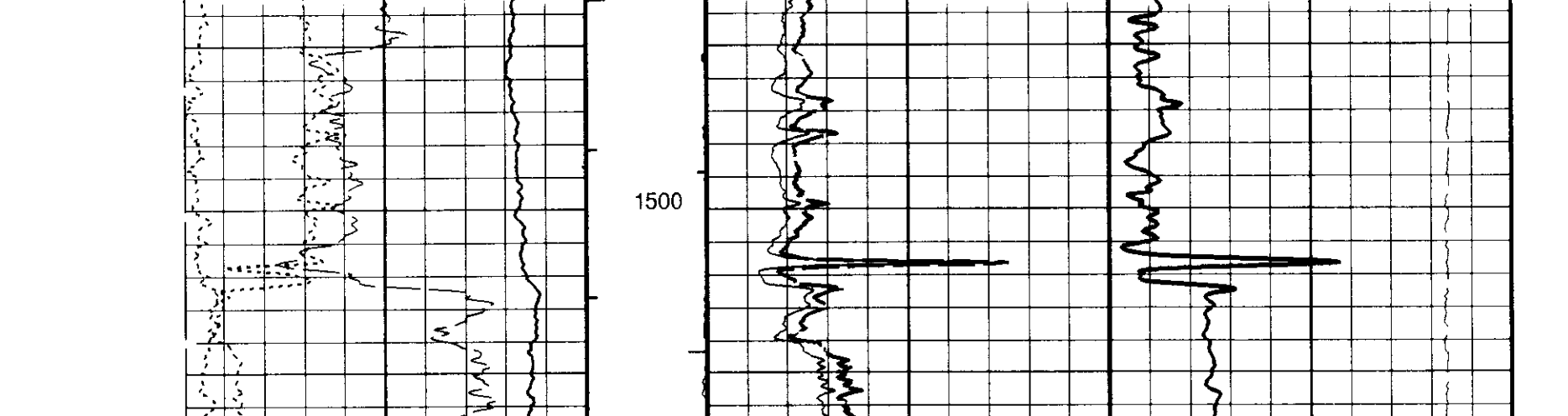
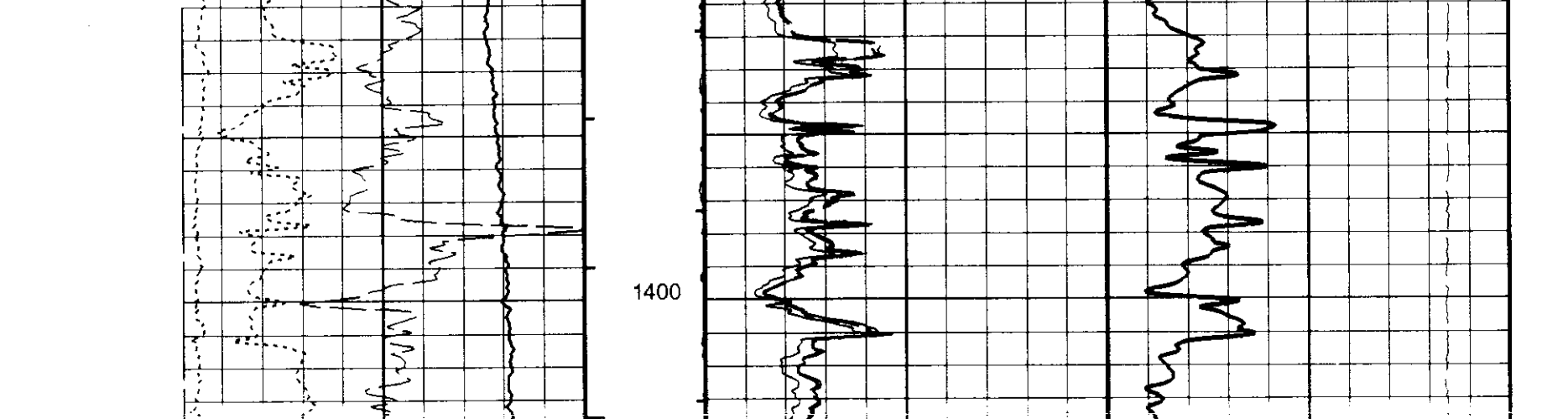
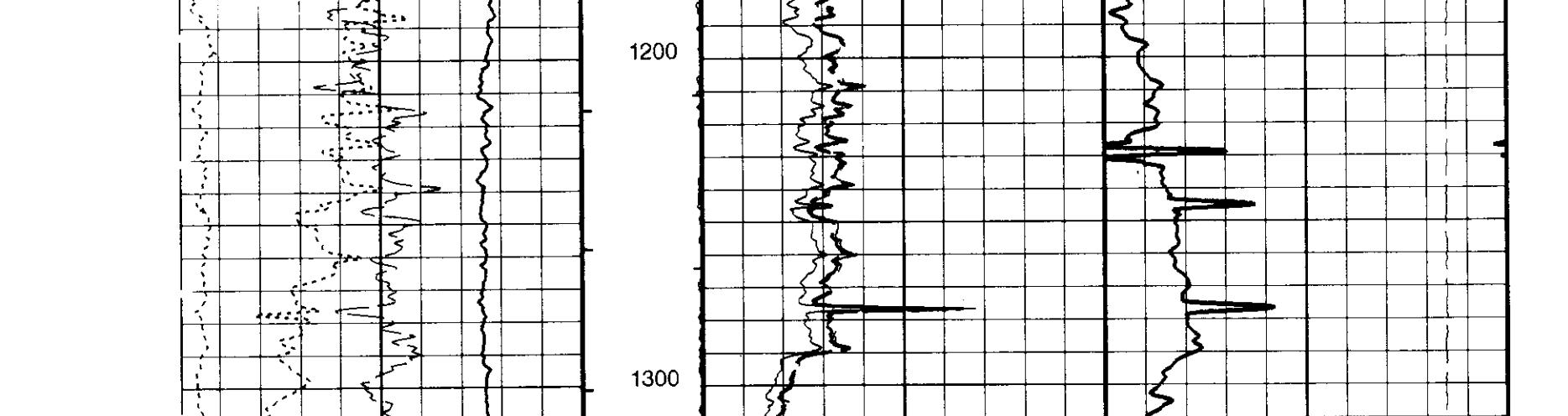
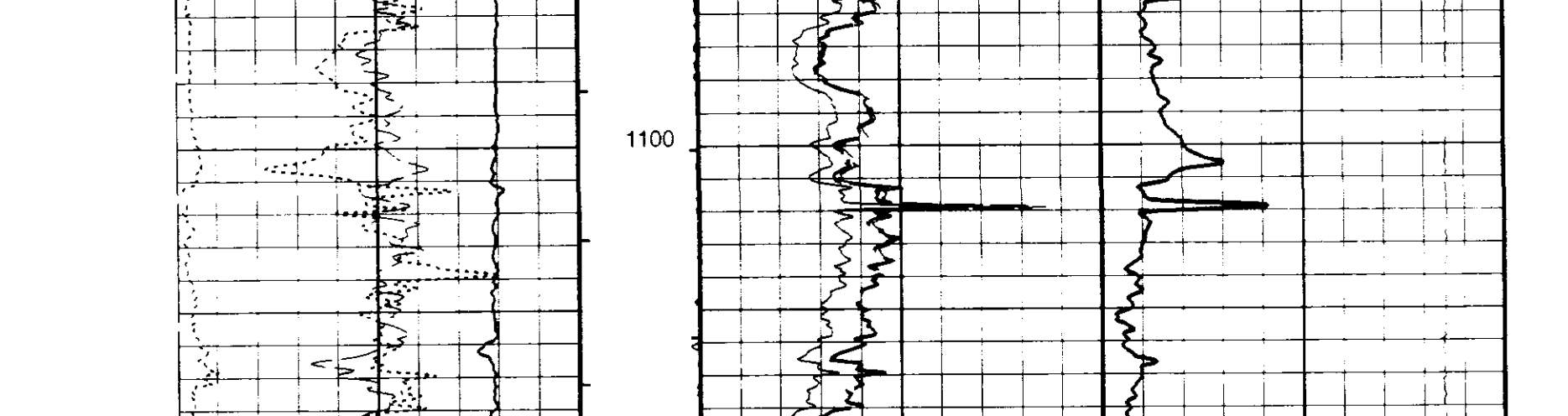
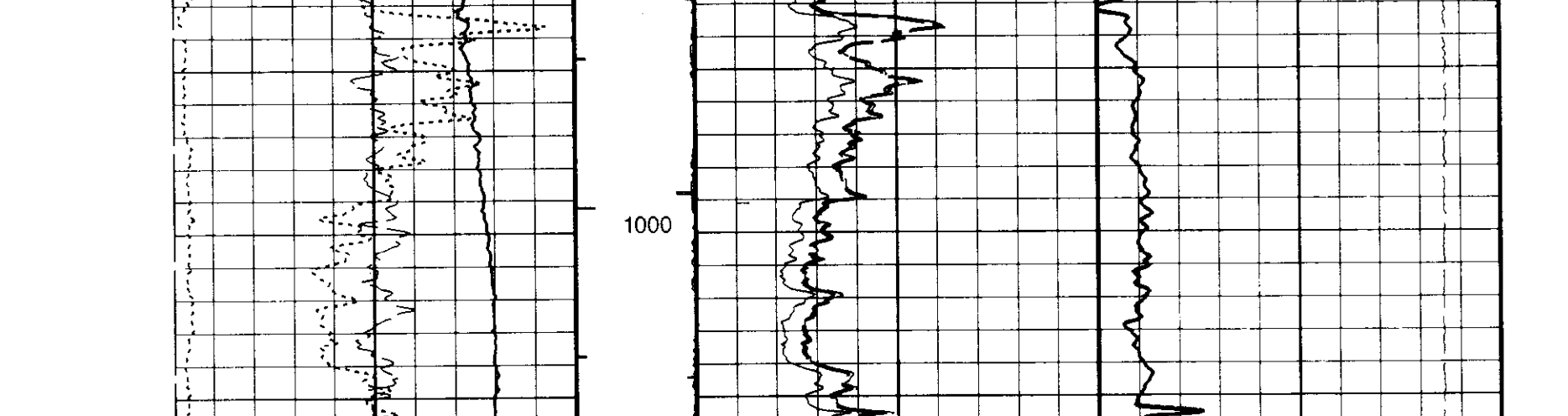
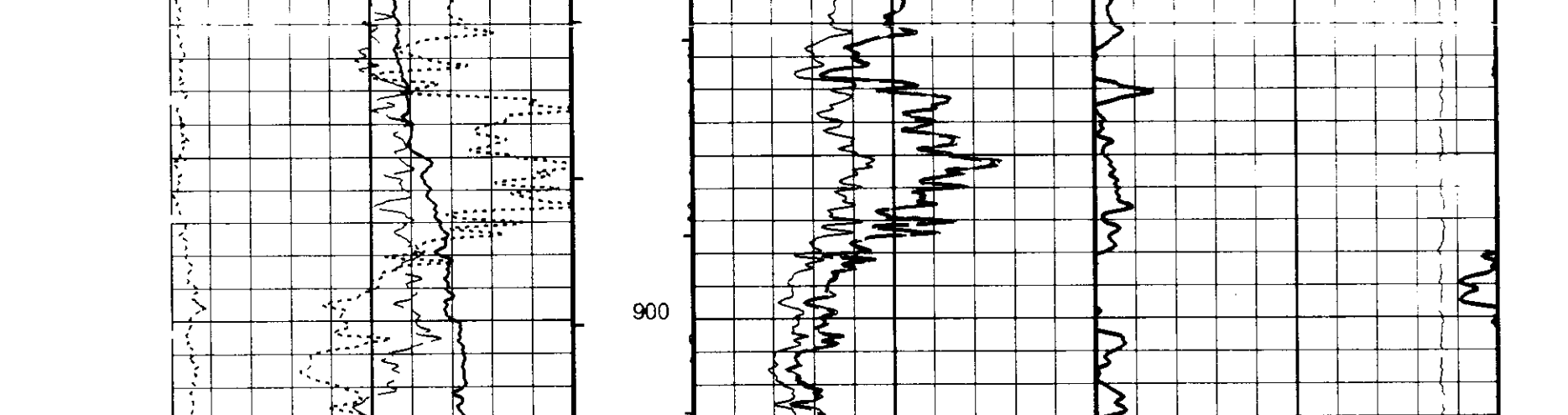
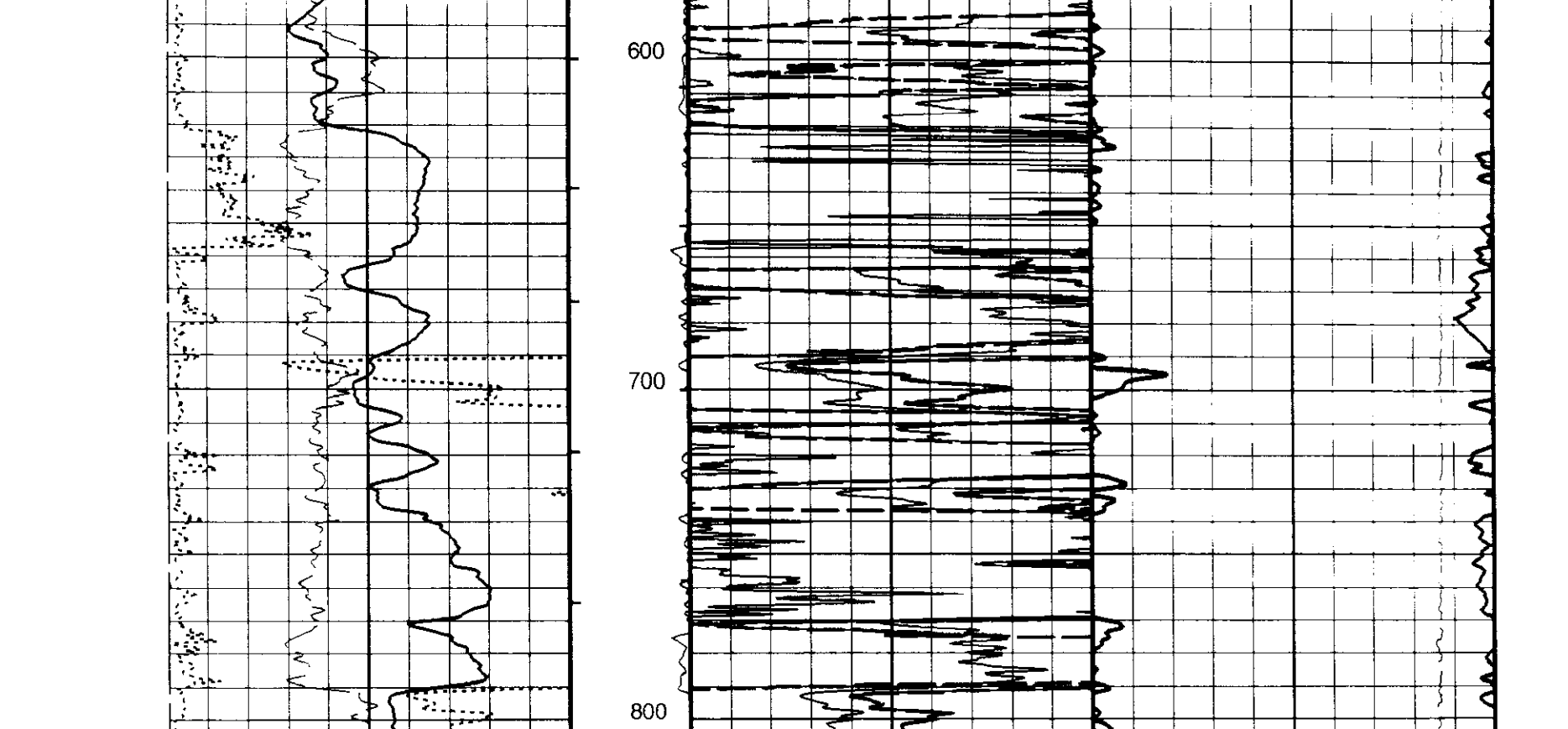
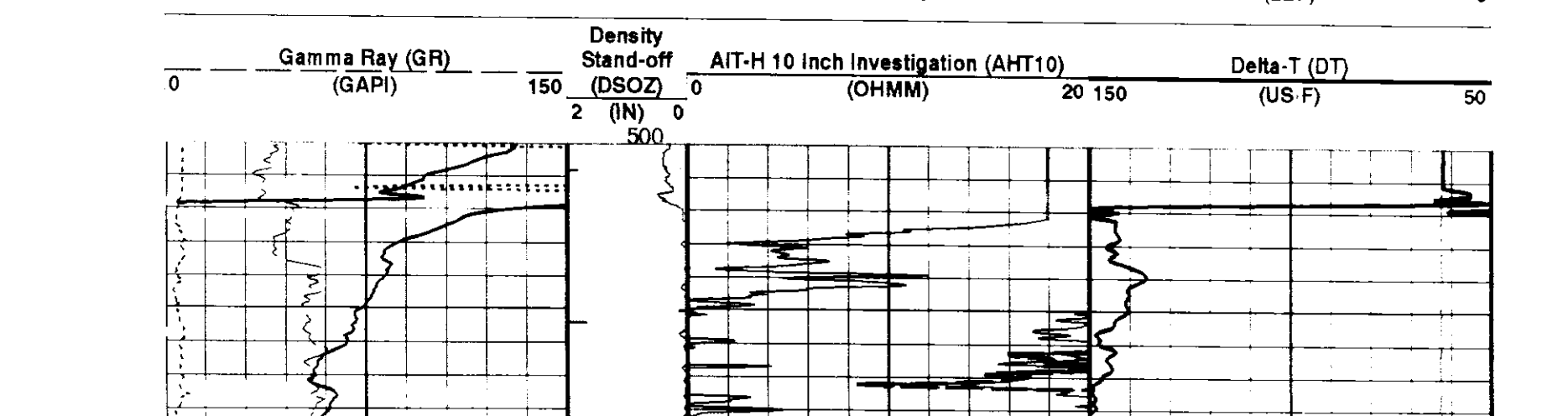
OP System Version: 9C0-413

HILTD OPR-KP1
 DTCH 9C0-413

DMLT-BB
 OPS-KP1

PIP SUMMARY

- Integrated Hole Volume Minor Pip Every 10 F3
- Integrated Hole Volume Major Pip Every 100 F3
- Integrated Cement Volume Minor Pip Every 10 F3
- Integrated Cement Volume Major Pip Every 100 F3



OP System Version: 9C0-413

HILTD OPR-KP1
 DTCH 9C0-413

DMLT-BB
 OPS-KP1

Input DLIS Files

DEFAULT	HILTD.004	FN:3	PRODUCER	19-Jun-1999 13:17	3240.0 FT	63.5 FT
DEFAULT	HILTD.003	FN:2	PRODUCER	19-Jun-1999 12:55	3234.0 FT	2732.5 FT

COMPANY: Enerfin Resources Northwest
WELL: Mist Gas
COUNTY: Columbia
STATE: Oregon

Schlumberger
Platform Express
Array Induction / BHC Sonic
Two Inch Correlation Print

BOTTOM LOG INTERVAL
 SCHLUMBERGER DEPTH: 3224 ft
 DEPTH DRILLER: 3230 ft
 KELLY BUSHING: 1676.74 ft
 DRILL FLOOR: 1775.74 ft
 GROUND LEVEL: 1666.74 ft