

Stegosaur 11-34-75B

Oil & Gas MD Mudlog

1:600 Scale

HORIZON

711 Saint Andrews Way Lompoc, CA 93436 Phone 805-733-0972 Fax 805-733-0952 http://www.horizon-well-logging.com

351 East 92nd Suite A Anchorage, AK 99515 Phone 907-563-7002 Fax 907-563-7005

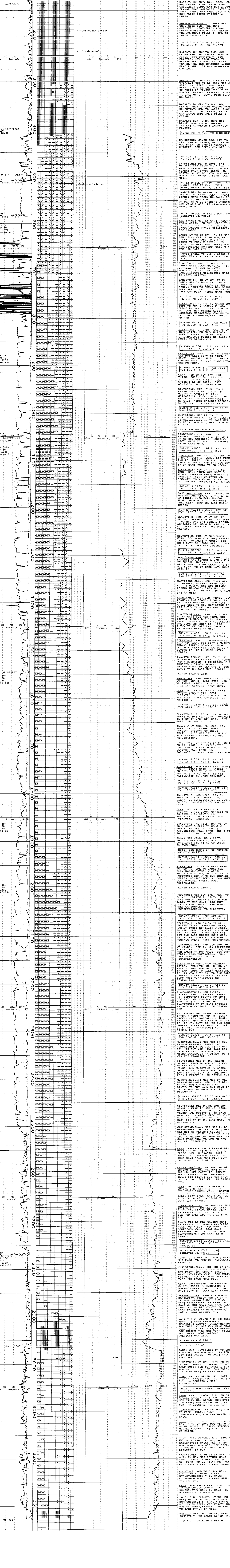
COMPANY WELL LOCATION ELEVATION FIELD COUNTY API NO. SPUD DATE LOGGING DATES CO. GEOLOGIST COMPANY MAN CONTRACTOR RIG MUD COMPANY TYPE LOGGING GEOLOGISTS

Enerfin Resources Stegosaur 11-34-75B X-1289948, Y-881986 Sec 34, T7N, R5W, MDB&M M1540', KB 1554' GLT Columbia 36-005-00343 10/4/2007 -10/11/2007 127' 32'

Abbreviations table with columns for abbreviations and full names (e.g., CO Circulate out, LAT Logged After Trip)

Symbols table with columns for symbols and lithology types (e.g., GABBRO, VOLCANICLASTIC, SHALE)

Log parameters table with columns for Drill Rate, Lithology, Shows, Gases, Chromatograph, and Descriptions



NOTE: GAS EQUIPMENT CALIBRATED TO SPALA STANDARDS; COLORS REFERRED TO THE OIL FIELD ROCK-COLOR CHART; ALL DEPTHS TYPICALLY 1/8"...

NOTE: COMMENCE LOGGING @ 127' ON 10/4/2007 @ 2000 HRS.

BASALT: DK GRV. BLK. ORSH GRV; HD: BRN; BLK. YEL. BRN; MOD. W. OXIDIZED; COMPETENT BUT W/COM. TRANSL. GRN. SMCCTIC MTRL; DEPTH.

VESICULAR BASALT: GRNISH GRV. OL. BRN; BLK. YEL. BRN; MOD. W. OXIDIZED; WEATHERED; EQUAL AMBISULE FILLING; SML TO LARGE BRN. CRGS.

BASALT: DK GRV TO BLK; HD: ORSH BRN; HD: DENSE; EQUA FINE SRTD; MOD. W. OXIDIZED; FRACTURED; JON. IRON STND; TR. MANG. OX. TR. BLK. MANGANESE COATINGS.

SANDSTONE: INITIALLY VELSH ORG OVERALL; MED TO LO CRS; MOD. W. SRTD; GR. SPRTD; MTRX FREE; FRIZ; TO MOD. W. INH. MOD. COM. COMPOSED OF VOLCANIC ORG; TUFF. FINE; BASAL; MOD. W. OXID. TR. CARB. MTRL; OLVN. POSS GLAUC; NON-CL. CTG.

BASALT: DK GRV TO BLK; HD: BRN; BLK. YEL. BRN; MOD. W. OXIDIZED; COMPETENT; SML TO LARGE, BLOCKY TO HACKLY CTGS; ABSV; RR DK GRN. IRON SHED; RR DK GRN. FRESH.

BASALT: BLK. V. DK GRV; HD: BRN; BLK. YEL. BRN; MOD. W. OXIDIZED; COMPETENT; INCREASING PELVIC.

SANDSTONE: GRVSH ORG; MED TO LO CRS; ANG TO SRND; FRLY SRTD; MOD. W. OXIDIZED; COM. QTY; COM. CARBONACEOUS MTRL; OCC. MICA.

SAND: LT TO DK GRV. PL TO MED GRN. BLK. CR. RICH BRN; MED TO V. CRU. TR. GRAS TO 2.5MM; SRTD; MTRX FREE; DOM. QTY; RR CARB. MTRL.

CLAYSTONE: MED LT GRV TO LT GRN. GRV; OCCURRING AS THIN INTERBED. MOD. W. OXID. NON-CALC; SILTY; VAIBLY CARBONACEOUS MTRL; GRAS TO ARGIL SILTSTN.

SANDSTONE: MED LT GRV TO FL. BRN; GRV; IN BULK SPLY; TO UPPER MED. MTRX FREE; ARGIL; FIRM TO FRAG; DOM. SRTD; FRIZ; MOD. W. OXID. GAS; COM. MICA; REDD CARB. MTRL.

SILTSTONE: FL GRN TO GRVSH GRN; SFT TO FIRM; ARGIL; FN SDV; MUSHY; SBLK-IRREG; NON-CALC; V. SBLK; COM. THIN BEDDED W/SS; NON-CALC; MICACEOUS; COM. FRIZ; OCC. LARGE DEBRIS; FRAG. RR FVR.

SILTSTONE: LT BRN. GRV TO LT GRV; ARGIL; FN SDV; UNIFORM; SBLK-IRREG; NON-CALC; CARBONACEOUS FLEKS; NON-CALC; FN MICA; TR. DISSEM. FVR.

CLAYSTONE: MED LT TO LT GRV; SFT; MUSHY; NON-CALC; SILTY; STRUCTURELESS; DL TR. CARB. MTRL; FN MICA; NON-CALC; GRV TO ARGIL SILTSTN.

SANDSTONE: CLR. TRANSL. VLT BRN; ANG-BANG; L. VFN; FN; VP CONGL. UNCONGL.; NON-CALC; ARGIL GRD TO SDV CLAYSTONE; TR. DK CARB. MATL; BGM COAL IP.

SAND/SANDSTONE: CLR. TRANSL. VLT BRN; ANG-BANG; L. VFN; FN; VP CONGL. UNCONGL.; NON-CALC; ARGIL GRD TO SDV CLAYSTONE; TR. DK CARB. MATL; BGM COAL IP.

CLAYSTONE: CLR. TRANSL. VLT BRN; ANG-BANG; L. VFN; FN; VP CONGL. UNCONGL.; NON-CALC; ARGIL GRD TO SDV CLAYSTONE; TR. DK CARB. MATL; BGM COAL IP.

SAND/SANDSTONE: CLR. TRANSL. VLT BRN; ANG-BANG; L. VFN; FN; VP CONGL. UNCONGL.; NON-CALC; ARGIL GRD TO SDV CLAYSTONE; TR. DK CARB. MATL; BGM COAL IP.

CLAYSTONE: CLR. TRANSL. VLT BRN; ANG-BANG; L. VFN; FN; VP CONGL. UNCONGL.; NON-CALC; ARGIL GRD TO SDV CLAYSTONE; TR. DK CARB. MATL; BGM COAL IP.

SAND/SANDSTONE: CLR. TRANSL. VLT BRN; ANG-BANG; L. VFN; FN; VP CONGL. UNCONGL.; NON-CALC; ARGIL GRD TO SDV CLAYSTONE; TR. DK CARB. MATL; BGM COAL IP.

CLAYSTONE: CLR. TRANSL. VLT BRN; ANG-BANG; L. VFN; FN; VP CONGL. UNCONGL.; NON-CALC; ARGIL GRD TO SDV CLAYSTONE; TR. DK CARB. MATL; BGM COAL IP.

SAND/SANDSTONE: CLR. TRANSL. VLT BRN; ANG-BANG; L. VFN; FN; VP CONGL. UNCONGL.; NON-CALC; ARGIL GRD TO SDV CLAYSTONE; TR. DK CARB. MATL; BGM COAL IP.

CLAYSTONE: CLR. TRANSL. VLT BRN; ANG-BANG; L. VFN; FN; VP CONGL. UNCONGL.; NON-CALC; ARGIL GRD TO SDV CLAYSTONE; TR. DK CARB. MATL; BGM COAL IP.

SAND/SANDSTONE: CLR. TRANSL. VLT BRN; ANG-BANG; L. VFN; FN; VP CONGL. UNCONGL.; NON-CALC; ARGIL GRD TO SDV CLAYSTONE; TR. DK CARB. MATL; BGM COAL IP.

CLAYSTONE: CLR. TRANSL. VLT BRN; ANG-BANG; L. VFN; FN; VP CONGL. UNCONGL.; NON-CALC; ARGIL GRD TO SDV CLAYSTONE; TR. DK CARB. MATL; BGM COAL IP.

SAND/SANDSTONE: CLR. TRANSL. VLT BRN; ANG-BANG; L. VFN; FN; VP CONGL. UNCONGL.; NON-CALC; ARGIL GRD TO SDV CLAYSTONE; TR. DK CARB. MATL; BGM COAL IP.

CLAYSTONE: CLR. TRANSL. VLT BRN; ANG-BANG; L. VFN; FN; VP CONGL. UNCONGL.; NON-CALC; ARGIL GRD TO SDV CLAYSTONE; TR. DK CARB. MATL; BGM COAL IP.

SAND/SANDSTONE: CLR. TRANSL. VLT BRN; ANG-BANG; L. VFN; FN; VP CONGL. UNCONGL.; NON-CALC; ARGIL GRD TO SDV CLAYSTONE; TR. DK CARB. MATL; BGM COAL IP.