

HORIZON

WELL
LOGGING

711 St. Andrews Way
Livermore, California 94550
(925) 733-0972

COMPANY: ENERGIN RESOURCES NORTHWEST
WELL LOCATION: C. C. 12-02-05 (Line 10) L. C. 570
W. N. 6 T. 15 S. R. 27 E. W. 8 S. W. 4
Sec. 02, T. 15 S., R. 27 E., W. 8 S. W. 4
X=1295520.9000, Y=875480.8000
BL 908.80' KB 918.80'

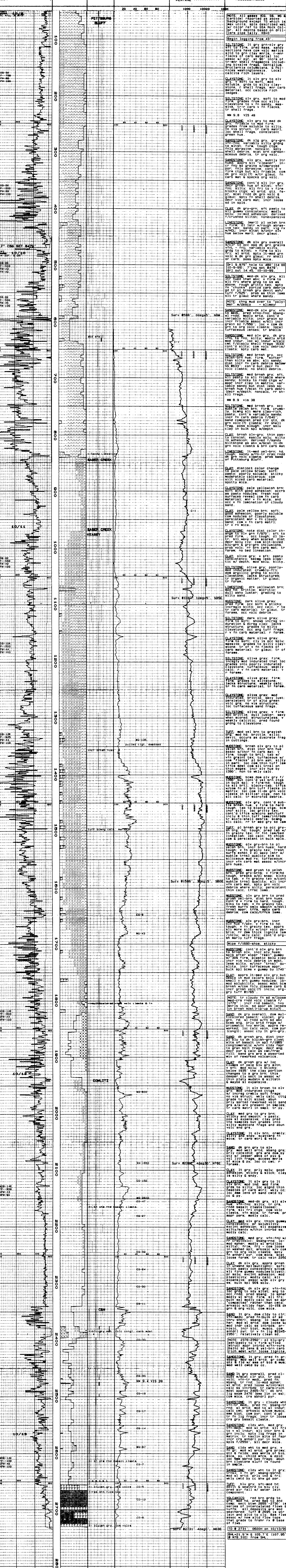
ELEVATION: Mist
FIELD: Columbia, Oregon
COUNTRY: Columbia, Oregon
SPUD DATE: Oct 08, 1999
LOGGING DATES: Oct 08 to Oct 13, 1999
OPERATOR: Energin Resources Northwest
GEOLOGIST: Dave Huggins
DRILL REP: Rob Lucas-Production Specialties
CONTRACTOR: Taylor Drilling Inc.
RIG: #7
MUD COMPANY: Jim Martin/Baker Chemical
MUD TYPE: Gel/Accu-Gauge
LOGGING GEOLOGIST: Jim Ewates, Mike Kraemer

BIT SIZE: 9.875 in. to 480'
6.25 in. to 2731'
7.00 in. to 479'

CASING: 12.00 in. to 30'
7.00 in. to 479'

CALCULATOR: 88 METHANE = 100 UNITS

ABBREVIATIONS		SYMBOLS	
CO	Circulate Out	PEBBLES >2mm	☐
LAT	Logged After Trip	SAND	▨
CG	Connection Gas	SANDSTONE	▩
MG	Wiper Gas	SILTSTONE	▪
TG	Trip Gas	MUDSTONE	▫
SG	Survey Gas	SHALE	▬
NR	No Returns	MARL	▮
NR	New Bit	CLAY	▯
MR	Wiper Run	LIGNITE	▰
COR	Core Interval	LODESTONE	▱
MOB	(100,000 full scale)	LIMESTONE	▴
PP	Pump pressure	VOLCANICS	▾
SPM	Strokes per minute	TUFF	▴▾
		BASALT	▣



711 St. Andrews Way
Livermore, California 94550
(925) 733-0972