



DIP LOG CALCULATIONS

2" x 100'

COMPANY REICHOLD ENERGY CORPORATION
 WELL COLUMBIA COUNTY 12-9 REDRILL NO. 1
 FIELD MIST, NEHALEM BASIN
 COUNTY COLUMBIA STATE OREGON

Location 795 NORTH & 126' EAST FROM THE C/AVL
 WEST 1/4 CORNER OF:
 Sec. 9 Two 6N Rpt. 5W
 Elevation: 734.2
 Elevation: 744.7

Permanent Datum: 6.1.2
 Lev. 734.2
 Lev. 744.7
 Drilling Measured From: K.B.
 Lev. 734.2
 Lev. 744.7

Date: 3-1-82
 Run No.: 2914
 Depth: 2910
 Driller: T.D. Welex
 Top Log Inter.: 405
 Change Driller: 7 @ 405
 Bit Size: 6 1/4
 Type Fluid in Hole: LIQUID
 Density: 10.0 @ 13.5 ml
 Fluid Loss: 1.59 @ 7.4 F
 Source of Sample: CIRCUITED
 Rm @ Meas. Temp: 1.0 @ 51 F
 Rmc @ Meas. Temp: 1.2 @ 51 F
 Rm @ BHT: 1.12 @ 105 F
 Rmc @ BHT: 1.05 @ 105 F

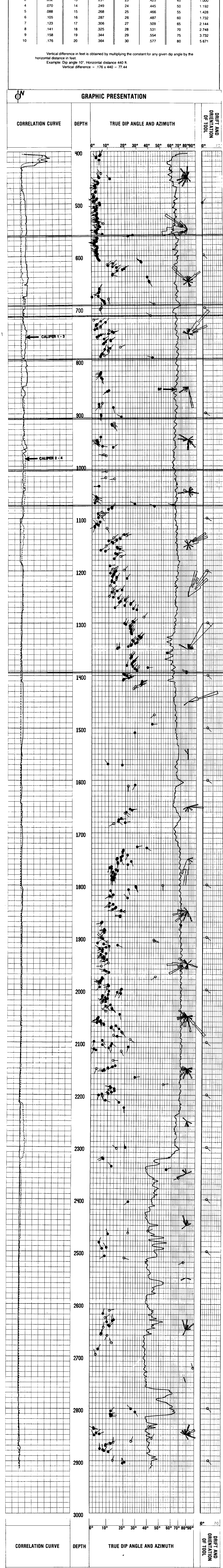
Service Ticket No. 116053
 Change in Mud Type or Additional Samples
 Date | Sample No. | Run No. | Dip | 2 | 3 | 4
 Type Fluid in Hole | Tool Type | 90127
 Tool Number | Pad Type | FORX0
 Correlated By
 Computed By
 MAND. NO. 30024 TRANS. NO. 90126
 Remarks: DRAFTED BY: B. CASTRO
 Source of Sample
 Rm @ Meas. Temp. @ F
 Rmc @ Meas. Temp. @ F
 Source: Rm | Rmc | I | I | I | I
 Rm @ BHT | 1.12 @ 105 F | F | F | F | F
 Rmc @ BHT | 1.05 @ 105 F | F | F | F | F
 Rmc @ BHT | 1.04 @ 105 F | F | F | F | F

Magnetic Declination NORTH 22.5° EAST

TABLE OF CONSTANTS FOR DETERMINING VERTICAL DIFFERENCE AT VARIOUS DIP ANGLES

DIP ANGLES Degrees	CONSTANT	DIP ANGLES Degrees	CONSTANT	DIP ANGLES Degrees	CONSTANT	DIP ANGLES Degrees	CONSTANT
1	.0175	11	.194	21	.384	35	.700
2	.035	12	.213	22	.404	40	.839
3	.052	13	.231	23	.425	45	1.000
4	.070	14	.249	24	.445	50	1.192
5	.088	15	.268	25	.466	55	1.428
6	.105	16	.287	26	.487	60	1.732
7	.123	17	.306	27	.509	65	2.144
8	.141	18	.325	28	.531	70	2.748
9	.158	19	.344	29	.554	75	3.732
10	.176	20	.364	30	.577	80	5.671

Vertical difference in feet is obtained by multiplying the constant for any given dip angle by the horizontal distance in feet.
 Example: Dip angle 10°. Horizontal distance 440 ft.
 Vertical difference = .176 x 440 = 77.44



COMPANY REICHOLD ENERGY CORPORATION
 WELL COLUMBIA COUNTY 12-9 REDRILL NO. 1
 FIELD MIST, NEHALEM BASIN
 COUNTY COLUMBIA STATE OREGON

T.D. LOGGED 2909
 T.D. DRILLER 2914
 T.D. WELEX 2910
 ELEV: K.B. 744.7
 D.F. G.L.
 G.L. 734.2

