



DIP LOG CALCULATIONS

COMPANY REICHHOLD ENERGY CORPORATION
 WELL COLUMBIA COUNTY 12-9
 FIELD MIST NEHALEM BASIN
 COUNTY COLUMBIA STATE OREGON
 LOCATION 795' NORTH AND 1267' EAST FROM THE WEST QUARTER CORNER OF S. 1 Twp. 6N Rge. 5W
 PERMANENT DATUM G.L., OR 10.5 Elev. 734.2
 LOG MEASURED FROM K.B. OR 10.5 Ft. Above Perm Datum Elev. K.B. 744.7
 DRILLING MEASURED FROM K.B. D.F. 734.2
 DATE 9-20-60
 RUN NO. ONE
 DEPTH - DRILLER 2918
 DEPTH - WELEX 2918
 BITM. LOG INTER. 2906
 TOP LOG INTER. 404
 CHANGING DRILLER 7 @ 405
 CHANGING WELEX 404
 BIT SIZE 6 1/4
 TYPE FLUID IN HOLE LIQUID SULF
 DENS. 1 VISC. 77 I 40
 PH 1 FLUID LOSS 9.0 I 5.0 ml
 SOURCE OF SAMPLE CIRCULATED
 Rm @ Meas. Temp. 2.50 @ 68 °F
 Rmf @ Meas. Temp. 2.60 @ 66 °F
 Rmc @ Meas. Temp. 1.80 @ 66 °F
 SOURCE RmI Rmc MEASURED
 Rm @ BHT 1.57 @ 108 °F
 Rmf @ BHT 1.58 @ 108 °F
 Rmc @ BHT 1.10 @ 108 °F
 TIME SLICE CIRC. 6HOURS
 MAX. REC. TEMP. 108 °F @ BHT
 EQUIP. LOCATION 2876 I MDIND
 RECORDED BY L.S. BOLDEN
 WITNESSED BY FRY

Service Ticket No. 055215 Remarks:
 Change in Mud Type or Additional Samples
 Date Sample No. Run No. 1 2 3 4
 Depth - Driller Tool Type DIP
 Type Fluid in Hole Tool Number 90728
 Dens. Visc. pH Fluid Loss
 Source of Sample
 Rm @ Meas. Temp. °F
 Rmf @ Meas. Temp. °F
 Rmc @ Meas. Temp. °F
 Source: RmI Rmc
 Rm @ BHT °F
 Rmf @ BHT °F
 Rmc @ BHT °F

Welex does not guarantee the accuracy of any interpretation of log data, conversion of log data to physical rock parameters, or recommendations which may be given by Welex personnel or which may appear on the log or in any other form. Any user of such data, interpretations, conversions, or recommendations agrees that Welex is not responsible, except where due to gross negligence or willful misconduct, for any loss, damage, or expenses from the use thereof.

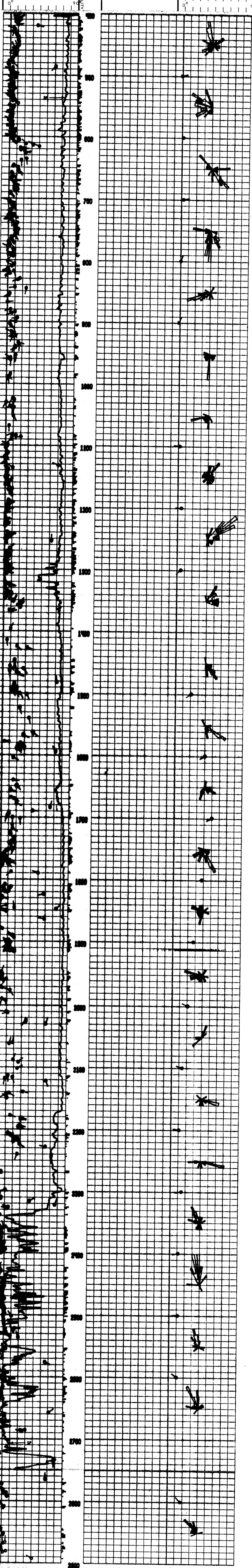
Magnetic Declination NORTH 21.5° EAST

TABLE OF CONSTANTS FOR DETERMINING VERTICAL DIFFERENCE AT VARIOUS DIP ANGLES

DIP ANGLES Degrees	CONSTANT	DIP ANGLES Degrees	CONSTANT	DIP ANGLES Degrees	CONSTANT	DIP ANGLES Degrees	CONSTANT
1	.0175	11	.194	21	.384	35	700
2	.035	12	.213	22	.404	40	839
3	.052	13	.231	23	.425	45	1,000
4	.070	14	.249	24	.445	50	1,192
5	.088	15	.268	25	.466	55	1,428
6	.105	16	.287	26	.487	60	1,732
7	.123	17	.306	27	.509	65	2,148
8	.141	18	.325	28	.531	70	2,744
9	.158	19	.344	29	.554	75	3,732
10	.176	20	.364	30	.577	80	5,671

Vertical difference in feet is obtained by multiplying the constant for any given dip angle by the horizontal distance in feet.
 Example: Dip angle 10°, Horizontal distance 440 ft.
 Vertical difference = .176 x 440 = 77.44

GRAPHIC PRESENTATION



REICHHOLD ENERGY CORPORATION
 COLUMBIA COUNTY 12-9
 MIST NEHALEM BASIN
 COLUMBIA COUNTY, OREGON
 T.D. LOGGED 2906
 T.D. DRILLER 2918
 T.D. WELEX 2918
 ELEV. G.L. 734.2 K.B. 744.7