

Schlumberger
BOREHOLE COMPENSATED
SONIC LOG

COMPANY REICHHOLD ENERGY CORPORATION
 WELL COLUMBIA COUNTY NO. 12
 FIELD MIST-NEHALEM BASIN
 COUNTY COLUMBIA STATE OREGON
 LOCATION 14-6N-5W COLUMBIA COUNTY #12
 COUNTY COLUMBIA FIELD MIST-NEHALEM BASIN
 WELL COLUMBIA COUNTY NO. 12
 LOCATION 14-6N-5W COLUMBIA COUNTY #12
 COMPANY REICHHOLD ENERGY CORPORATION
 ORDER SERVICES
 HDT
 DI-SFL
 6391 SOUTH & 2091 EAST OF THE
 NORTHWEST CORNER OF THE
 SECTION 14 6N 5W T14S R2E S14E
 PERMANENT DATUM: GL ELEV: 797.65
 LOG MEASURED FROM: KB ELEV: K 808.45
 DRILLING MEASURED FROM: KB ELEV: D F 808.45
 DATE 3-E-80
 RUN NO. ONE
 DEPTH-DRILLER 3160
 DEPTH-LOGGER (SCH.) 3160
 Btm Log Interval 3150
 Top Log Interval 398
 Gaining Driller 7 ft
 Gaining Driller 398
 Bit Size 6.1 1/8
 Type Fluid in Hole GUNDSULFONATE
 Density 8.6
 Visc 2.4
 PH 7
 Source of Sample LOW MEAN
 Ref. @ Max Temp 1.29
 Ref. @ Min Temp 1.49
 Source Ref. Rec 1.29
 Run @ BH 1.29
 Run @ BH 1.29
 Calculation Stopped 0100
 Logger on Bottom 0800
 Max Rec. Temp 81.76
 Equip Location 81.76
 Recorded By F. INNELL
 Witnessed By BRIMER

SCALE CHANGES
 Type Log Depth Scale Up Hole Scale Down Hole
 55.6 189.1 175-75 398 TD

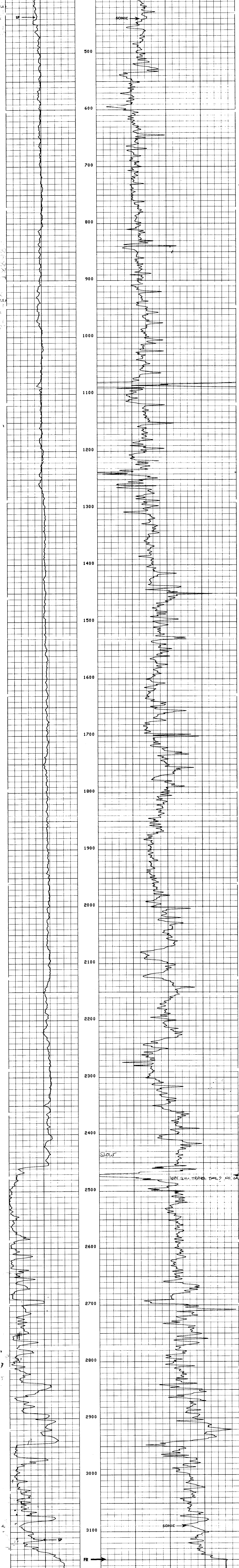
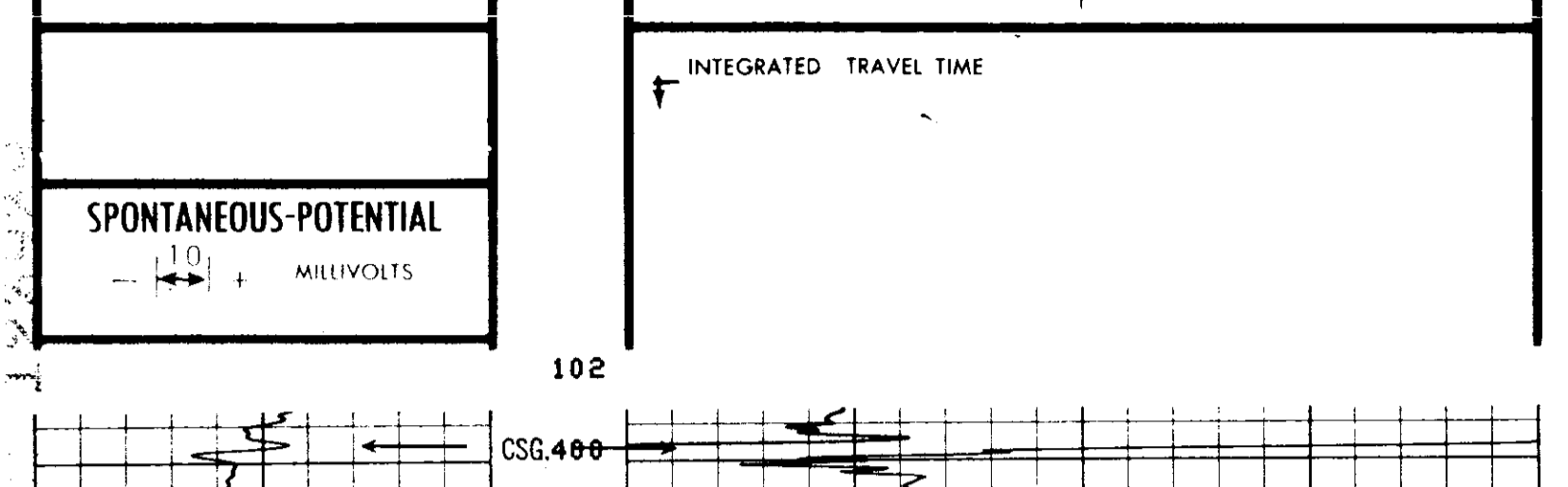
LOGGING DATA
 Porosity Selectors Depth
 1m ft Cp 0 From To
 55.6 189.1 175-75 398 TD

EQUIPMENT DATA
 Sonic Panel No. DA 443
 Sonic Cart No. DA 1103
 Mem. Panel No. --
 G.R. Cart No. --
 G.R. Panel No. --
 Coliper No. 495
 TTR No. --
 Centralizers No. CME-Z
 Type --
 Standoffs No. --
 Type --
 Time Const.-Sec. --
 Speed - F.P.M. 60

CALIBRATION DATA
 BKG. CPS --
 GR Source CPS --
 Tc Sec --

REMARKS
 SP RECORDED FROM DI-SFL

Velocity (ft sec) = 1,000,000 / Interval Transit Time (microseconds per foot)



SPONTANEOUS-POTENTIAL
 10 MILLIVOLTS
 - +

INTEGRATED TRAVEL TIME

INTERVAL TRANSIT TIME MICROSECONDS PER FOOT T³r, 2¹r_s

DEPTH 175 75

COMPANY REICHHOLD ENERGY CORPORATION
 WELL COLUMBIA COUNTY NO. 12
 FIELD MIST-NEHALEM BASIN
 COUNTY COLUMBIA STATE OREGON

SCHL. FR 3150
 SCHL. TD 3160
 DRLR. TD 3160

Elev: KB 808.45
 DF --
 GL 797.65