

APR 23 1980

Schminke Logger

**DUAL INDUCTION-SFL WITH LINEAR CORRELATION LOG**

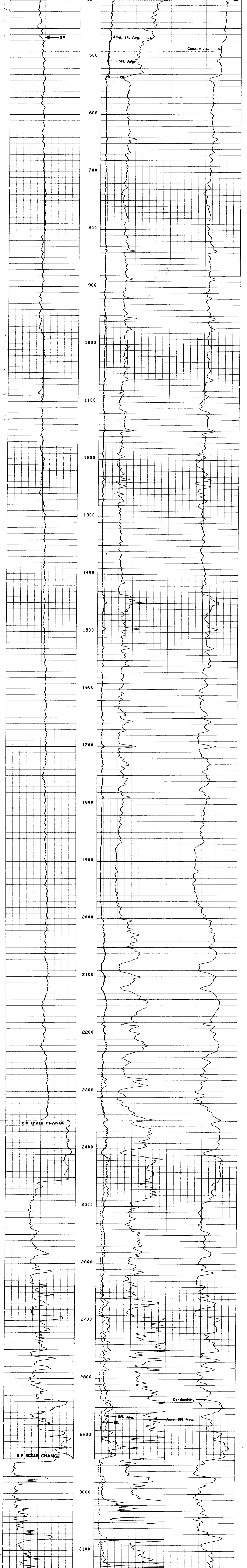
COMPANY	REICHOLD ENERGY CORPORATION
WELL	COLUMBIA COUNTY NO. 12
FIELD	MIST-NEHALEM BASIN
COUNTY	COLUMBIA STATE OREGON
LOCATION	391 SOUTH E. 2091 EAST OF THE NORTHWEST CORNER OF:
Other Services	HOI BHC 211
Permanent Datum	61 Elev: 797.65
Log Measured From	KB 10.5ft Above Perm. Datum Elev: 808.45
Drilling Measured From	KB Elev: 797.65
Date	3-3-80
Run No.	ONE
Depth - Logger	3153
Depth - Logger (Sch.)	3153
Top Log Interval	398 @ 199
Bottom Log Interval	711 @ 199
Company - Logger	61
Bit Size	6 1/2 INCHES
Type Fluid in Hole	WATER
Fluid Level	96
Fluid Loss	2
FT. OVERLINE	
Rm @ Mass. Temp.	1.23 @ 60 F
Rm @ Mass. Temp.	1.29 @ 48 F
Rm @ Mass. Temp.	2.44 @ 48 F
Source: Rm Rate	M
Rm @ BHT	1.28 @ 98 F
Log on Bottom	05:00
Log on Bottom	98 F
Max. Rec. Temp.	98 F
Equip. Location	8126 S4C
Witnessed By	F. LINNELL

FOLD HERE The well name, location and borehole reference data were furnished by the customer.

Run No.	127939	SCALE CHANGES	Type Log	Depth	Scale Up Hole	Scale Down Hole
Fluid Level	FULL					
Salinity ppm. cl	--					
Speed F.P.M.	--					
<b>EQUIPMENT DATA</b>		<b>REMARKS</b>				
Panel No.	--	SFL READING TOO HIGH FROM 3000' - 3085' AND 3120' - TD.				
Cartridge No.	100					
Sonde No.	18					
Mem. Panel No.	--					
G.R. Panel No.	--					
Tape Recorder - (TR)	--					
Depth Encoder - (DRE)	--					
Pressure Wheel - (CPM)	--					
Type Centralizers	--					
Stand Off - Inches	--					
<b>CALIBRATION DATA</b>						
SBR	1.0					
Sonde Error - ILM	3.27					
Sonde Error - ILD	9.84					
G.R. BKG. - CPS.	--					
G.R. Source - CPS.	--					
S.E. Set In Hole - Depth	--					
S.E. Corr. - Hole Size	--					
<b>LOGGING DATA</b>						
SBR	1.0					
Sonde Error Log - ILM	3.27					
Sonde Error Log - ILD	9.84					
G.R. Scale per 100 Div.	--					
G.R. - T.C. Log	--					

All interpretations are opinions based on inferences from electrical or other measurements and we cannot and do not guarantee the accuracy or correctness of any interpretations, and we shall not, except in the case of gross or willful negligence on our part, be liable or responsible for any loss, costs, damages or expenses incurred or sustained by anyone resulting from any interpretation made by any of our officers, agents or employees. These interpretations are also subject to Clause 4 of our General Terms and Conditions as set out in our current Price Schedule.

<b>SPONTANEOUS POTENTIAL</b>	<b>RESISTIVITY</b> OHMS. M <sup>2</sup> /M DEEP INDUCTION R <sub>ILD</sub>	<b>CONDUCTIVITY</b> MILLIMHOS/M DEEP INDUCTION
MILLIVOLTS		
0	0	1000
0	300	0
0	30	
0	300	
0	6	



<b>SPONTANEOUS-POTENTIAL</b>	<b>RESISTIVITY</b> OHMS. M <sup>2</sup> /M DEEP INDUCTION R <sub>ILD</sub>	<b>CONDUCTIVITY</b> MILLIMHOS/M DEEP INDUCTION
MILLIVOLTS		
0	0	1000
0	300	0
0	30	
0	300	
0	6	

COMPANY	REICHOLD ENERGY CORPORATION	SCHL. FR	3153
WELL	COLUMBIA COUNTY NO. 12	SCHL. TD	3159
FIELD	MIST-NEHALEM BASIN	DRLR. TD	3160
COUNTY	COLUMBIA STATE OREGON	Elev. KB	808.45
		DF	--
		GL	797.65