

COMPANY: REICHOLD ENERGY CORPORATION

WELL: COLUMBIA COUNTY #13-1 RD#1

FIELD: MIST
COUNTY: COLUMBIA
STATE: OREGONLOCATION: 1393' NORTH & 1256' EAST
OF SOUTHWEST CORNER OFSECT: 1
TWP: 6N
RGE: 5MPERMANENT DATUM: GL
ELEV. OF PERM. DATUM: 1163.2'LOG MEASURED FROM: KB
11.4' ABOVE PERM. DATUMDRLG. MEASURED FROM: KB
GL: 1163.2'DATE: 9 MAY 82
RUN NO: 1DEPTH-DRILLER: 3028.0'
DEPTH-LOGGER: 3015.0'
BPM LOG INTERVAL: 2975.0'
TOP LOG INTERVAL: 437.0'CASING-DRILLER: 436'
CASING-LOGGER: 437'
CASING: 7"
BIT SIZE: 6.25OTHER SERVICES-
DIL
HDTPROGRAM
TAPE NO:
SERIAL NO:
SERVICE
DRIVER NO:
205640

TYPE FLUID IN HOLE: GEL-WATER
DENSITY: 11.5 LB/G
VISCOSITY: 45.0 S
PH: 9.5
FLUID LOSS: 6.5 C3
SOURCE OF SAMPLE: MUD PIT
RM: 6.550 DHMM AT 58.0 DF
RMF: 6.930 DHMM AT 45.0 DF
RMC: 4.118 DHMM AT 45.0 DF
SOURCE RMF/RMC: MEASURED/CALCULATED
RM AT BHT: 5.132 DHM AT 75.0 DF
RMF AT BHT: 4.394 DHM AT 75.0 DF
RMC AT BHT: 2.611 DHM AT 75.0 DF

TIME CIRC. STOPPED: 0730
TIME LOGGER ON BTM.: 1030

MAX. REC. TEMP: 75.0 DF

LOGGING UNIT NO: 9216
LOGGING UNIT LOC: SACRAMENTO

RECORDED BY: COLLINS
WITNESSED BY: BRUER

REMARKS:

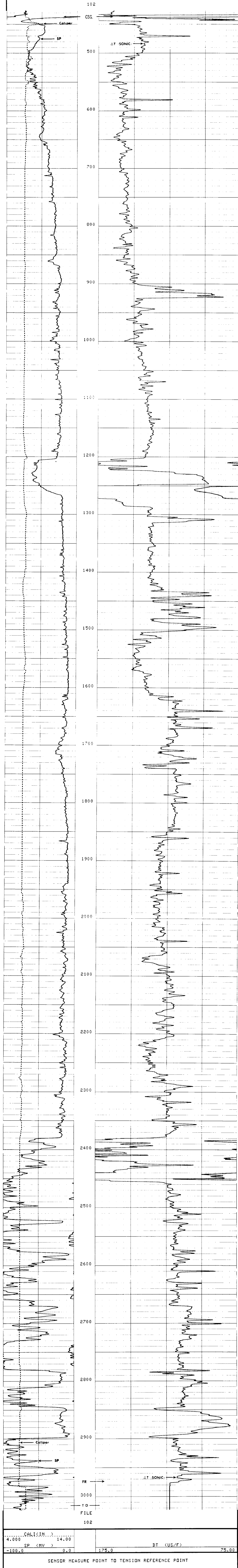
EQUIPMENT NUMBERS-

SLS 375 SLC 592 MCD 305 SLM 383

ALL INTERPRETATIONS ARE OPINIONS BASED ON INFERENCES FROM ELECTRICAL OR OTHER MEASUREMENTS AND WE CANNOT, AND DO NOT GUARANTEE THE ACCURACY OR CORRECTNESS OF ANY INTERPRETATIONS, AND WE SHALL NOT, EXCEPT IN THE CASE OF GROSS OR WILLFUL NEGLIGENCE ON OUR PART, BE LIABLE OR RESPONSIBLE FOR ANY LOSS, COSTS, DAMAGES OR EXPENSES INCURRED OR SUSTAINED BY ANYONE RESULTING FROM ANY INTERPRETATION MADE BY ANY OF OUR OFFICERS, AGENTS OR EMPLOYEES. THESE INTERPRETATIONS ARE ALSO SUBJECT TO OUR GENERAL TERMS AND CONDITIONS AS SET OUT IN OUR CURRENT PRICE SCHEDULE.

FILE

103



CALIPER... 14.00
SP (MV) 0.0

DT (US/F) 175.0 75.00

SENSOR MEASURE POINT TO TENSION REFERENCE POINT

AMPL	41.4	FEET	DT	38.9	FEET
SRAT	38.9	FEET	CBL	41.4	FEET
CALI	29.3	FEET	TOT	41.4	FEET
STI	3.9	FEET	ILD	6.9	FEET
SP	.0	FEET	ILM	3.3	FEET
TENS	.0	FEET	SPAR	.0	FEET
NOIS	33.2	FEET			

PARAMETERS

NAME	VALUE	UNIT	NAME	VALUE	UNIT
CDTS	100.0		BS	6.250	IN
DTF	189.6	US/F	DTH	66.000	US/F
SBR	1.000	DHMM	DSEC	6.600	MMHO
FPHI	SPHI		MSEC	0.3000	
DO	0.0		BHS	OPEN	

COMPANY: REICHOLD ENERGY CORPORATION

SCHL. FR 2974.0

WELL: COLUMBIA COUNTY #13-1 RD-1

SCHL. TD 3015.0

DRLR. TD 3028.0

FIELD: MIST

Elev: KB 1174.6

COUNTY: COLUMBIA STATE: OREGON

DF

GL 1163.2