

CE 15-01-65



**DIP LOG CALCULATIONS**

2" = 100'

COMPANY REICHHOLD ENERGY CORPORATION

COMPANY REICHHOLD ENERGY CORPORATION  
 WELL COLUMBIA COUNTY 13-1  
 FIELD MIST  
 COUNTY COLUMBIA STATE CALIFORNIA  
 Location NORTH & 125<sup>th</sup> EAST OF THE C/AVL  
 SOUTHWEST CORNER OF:  
 Sec. 1 Two 6N Rge. 5W  
 ELEV. 1163.2  
 ELEV. 1174.6  
 G.L. 1163.2

PERMITS: 1163.2  
 Log Measured From K.B.  
 Drilling Measured From K.B.  
 Date 8-13-81  
 Run No. ONE  
 Depth - Driller 3076  
 Depth - Welex 3063  
 Btm. Log Inter. 7  
 Top Log Inter. 436 @ 436  
 Gauge - Welex 436  
 Bit Size 6 1/4  
 Type Fluid in Hole GEL  
 Dens. 1 Visc. 8.7 1.37  
 DHT Fluid Loss 10.0 1.0  
 Source of Sample REGULATED  
 Rm @ Meas. Temp. 5.28 5.0  
 Rm @ Meas. Temp. 6.58 4.8  
 Source Fluid Meas. MEAS. BLEED  
 Rm @ BHT 3.5 @ 110 °F  
 Rm @ BHT 2.5 @ 110 °F  
 Rm @ BHT 2.9 @ 110 °F  
 Time Since Circ. 2 HR'S @ BHT  
 Equip. Location 8586, 1 WOODLAND  
 Recorded By VORHIES  
 Witnessed By BRUER

Field Here Service Ticket No. 054960 Remarks:

Date	Sample No.	Run No.	1	2	3	4
Type Fluid in Hole		Tool Type	DIP			
Dens.		Tool Number	27043			
Visc.		Pad Type	FORX0			
Fluid Loss		Computed By	MAND. NO. 28575 TRANS. NO. 26321			
Source of Sample		Remarks:				
Rm @ Meas. Temp.						
Rm @ Meas. Temp.						
Source: Rm   Rmc						
Rm @ BHT						
Rm @ BHT						
Rm @ BHT						

Welex does not guarantee the accuracy of any interpretation of log data, conversion of log data to physical rock parameters, or recommendations which may be given by Welex personnel or which may appear on the log or in any other form. Any user of such data, interpretations, conversions, or recommendations agrees that Welex is not responsible, except where due to gross negligence or willful misconduct, for any loss, damages, or expenses from the use thereof.

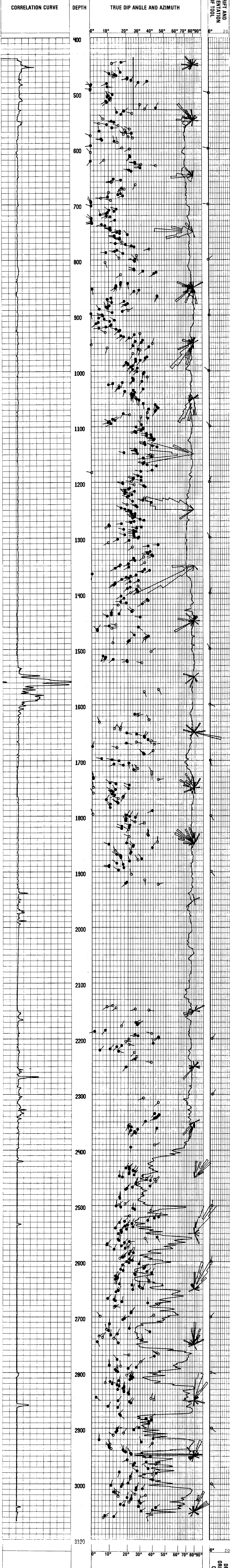
Magnetic Declination NORTH 22° EAST

**TABLE OF CONSTANTS FOR DETERMINING VERTICAL DIFFERENCE AT VARIOUS DIP ANGLES**

DIP ANGLES Degrees	CONSTANT	DIP ANGLES Degrees	CONSTANT	DIP ANGLES Degrees	CONSTANT	DIP ANGLES Degrees	CONSTANT
1	.0175	11	.194	21	.384	35	.700
2	.035	12	.213	22	.404	40	.839
3	.052	13	.231	23	.425	45	1.000
4	.070	14	.249	24	.445	50	1.192
5	.088	15	.268	25	.466	55	1.428
6	.105	16	.287	26	.487	60	1.732
7	.123	17	.305	27	.509	65	2.144
8	.141	18	.326	28	.531	70	2.748
9	.158	19	.344	29	.554	75	3.732
10	.176	20	.364	30	.577	80	5.671

Vertical difference in feet is obtained by multiplying the constant for any given dip angle by the horizontal distance in feet.  
 Example: Dip angle 10°, Horizontal distance 440 ft.  
 Vertical difference = .176 x 440 = 77.44

**GRAPHIC PRESENTATION**



COMPANY REICHHOLD ENERGY CORPORATION  
 WELL COLUMBIA COUNTY 13-1  
 FIELD MIST  
 COUNTY COLUMBIA STATE OREGON  
 T.D. LOGGED 3063  
 T.D. DRILLER 3076  
 T.D. WELEX 3065  
 ELEV. K.B. 1174.6  
 D.F. 1163.2  
 G.L. 1163.2