

02-B-01-66



2" = 100'

**DUAL INDUCTION
GUARD LOG**

COMPANY: REICHHOLD ENERGY CORPORATION
 WELL: COLUMBIA COUNTY 13-1
 FIELD: MIST API NO. 009-00084
 COUNTY: COLUMBIA STATE: OREGON
 Location: 1393' NORTH & 1252' EAST OF THE C/AVL
 SOUTHWEST CORNER OF:
 (W.B. & M.)
 GEOPHONE

Permanent Datum: G.L., Elev. 1163.2
 Log Measured From: K.B., 08, Elev. 1163.2
 Drilling Measured From: K.B., 08, Elev. 1163.2
 Date: 8-13-81
 Run No: ONE
 Depth - Driller: 3076
 Depth - Welex: 3067
 Btm. Log Lier: 3067

Top Log Lier: 436 @ 436
 Casing - Driller: 7 @ 7
 Casing - Welex: 436 @ 436
 Bit Size: 6 1/4
 Type Fluid in Hole: GEL

Dens. | Visc. | pH | Fluid Loss
 Source of Sample: CIRCULATED
 R_m @ Meas. Temp.: 5.90 @ 66°F
 R_m @ Meas. Temp.: 5.21 @ 50°F
 R_m @ Meas. Temp.: 6.35 @ 48°F
 Source R_m R_{mc}: MEASURED
 R_m @ BHT: 3.50 @ 110°F
 R_{mc} @ BHT: 2.50 @ 110°F
 R_{mc} @ BHT: 2.90 @ 110°F
 Time Since Circ.: 2 HRS.
 Max. Rec. Temp.: 110°F @ BHT
 Equip. Location: 8586, LINDLAND
 Recorded By: VORHEES
 Witnessed By: BRUER

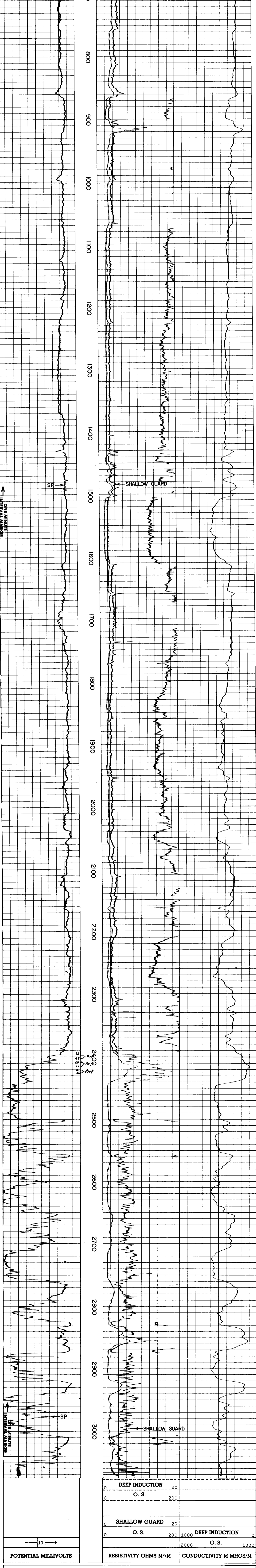
Service Ticket No. 054960 Remarks:

Change in Mud Type or Additional Samples		SCALE CHANGES	
Date Sample No.	Type Log	Depth	Scale Up Hole Scale Down Hole

Dens. Visc.		EQUIPMENT DATA		
ph Fluid Loss	Source of Sample	Run No.	Tool Type and No. Pad Type Tool Position Other	
		ONE	DIG	N/A

Source: R_m | R_{mc}
 R_m @ BHT: 3.50 @ 110°F
 R_{mc} @ BHT: 2.50 @ 110°F
 R_{mc} @ BHT: 2.90 @ 110°F

Welex does not guarantee the accuracy of any interpretation of log data, conversion of log data to physical rock parameters, or recommendations which may be given by Welex personnel or which may appear on the log or in any other form. Any user of such data, interpretations, conversions, or recommendations agrees that Welex is not responsible, except where due to gross negligence or willful misconduct, for any loss, damages, or expenses resulting from the use thereof.



REICHHOLD ENERGY CORPORATION
 COLUMBIA COUNTY 13-1
 MIST
 COLUMBIA COUNTY, OREGON

T.D. LOGGED 3067
 T.D. DRILLER 3076
 T.D. WELEX 3069
 ELEV: KB 1174.6 GL 1163.2

CC 13-1