

Schlumberger

COMPUTER PROCESSED LOG

A Synergistic Log System CASED HOLE RESERVOIR ANALYSIS*

The following logs were used: TDY/GR, BASE LOG

COMPANY RELIHOOLD ENERGY CORPORATION
 WELL COLUMBIA COUNTY #13-1
 FIELD MIST NEHAULEN BASIN
 COUNTY PROV. COLUMBIA STATE COUNTRY OREGON
 LOCATION 1323 N. S. 1252 E. FROM SW CORNER SEC. 1 T4P 4N
 DATE LOGGED OH 5-9-82 CH 6-10-82
 DATE COMPUTED OH CH 6-27-82
 ELEVATION 88174.60F - G-1163.2 API NO -

BORE HOLE RECORD		CASING & TUBING RECORD		
BIT	TO	SIZE	WGT	FROM
5,22	36	2-3/8	4.7	SURFACE
		4.5	10.5	SURFACE
		7	-	SURFACE
				436

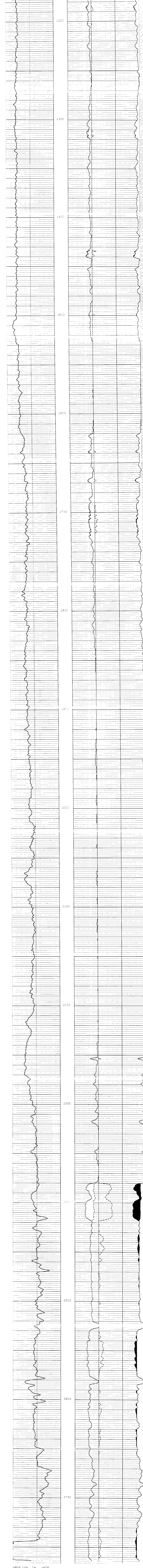
Field Report Engineer JOFFERTY Log No. 5774 Date 6/4/85
 Office Record Computer Center PCCC Program No. NTH Analyst JOHNSTON Computing Center Job No. 62633
 Log depths of these records refer to: Depth True Vertical Slant Depth

COMPUTATION PARAMETERS

Depth Interval	From	To	Delta	Delta	Delta	Delta	Delta	Delta	Delta	Delta	Delta	Delta	Delta	Delta	Delta	Delta	Delta	Delta	Delta
1000	1930	55	55	10	10/10	0.27	0.27	105	16.29	0.40									
1930	2524	60	55	10	10/10	0.27	0.27	105	16.23	0.40									
2524	2764	60	55	10	10/10	0.27	0.27	105	20.31	0.40									

Note: Total Porosity Determined From CONCENTRATES
 REMARKS Well was Shut In Flowing Oil 100%

FORMATION CHARACTERISTICS	DEPTHS	BASE LOG CHARACTERISTICS		POROSITY AND FLUIDS ANALYSIS		FORMATION ANALYSIS
		GAS INDEX	%	%	%	
GAMMA RAY API UNITS	150					
SPONTANEOUS POTENTIAL MILLIVOLTS	50					
	50					



CURVE YES SW1 SW	-100.0000	0.0000000E+00	5.750	8.250	LIN SOLID
CURVE YES USH USH	-100.0000	100.0000	5.750	8.250	LIN SOLID
CURVE YES DUM PHIE	-4000.0000	4000.0000	5.750	8.250	LIN SOLID
CURVE YES PH12 PHIE	50.000000	-50.000000	5.750	8.250	LIN SOLID
CURVE YES BUWC BUWC	50.000000	-50.000000	5.750	8.250	LIN DASHED
CURVE YES BUW BUW	50.000000	-50.000000	5.750	8.250	LIN SOLID
CURVE YES TPE TPE	50.000000	-50.000000	5.250	5.750	LIN DASHED
CURVE YES SWC SWC	200.0000	0.0000000E+00	3.250	5.750	LIN DASHED
CURVE YES SW BU	300.0000	0.0000000E+00	3.250	5.750	LIN SOLID
CURVE YES PH11 PHIE	50.000000	-50.000000	3.250	5.750	LIN SOLID
CURVE YES SP SP	-140.0000	140.0000	0.000	3.500	LIN DASHED
CURVE YES SP SP	0.0000000E+00	250.0000	0.000	3.500	LIN SOLID