

WELL COLUMBIA COUNTY 13-34
COMPANY REICHHOLD ENERGY CORP.

WESTERN GEO-ENGINEERS

RECEIVED-PH
DEC 29 1982

AREA MIST-NEHALEM BASIN
LOCATION 2386.36' FROM S. LINE & 502.92'
FROM W. LINE, SEC 34, T7N, R5W, W8&M
COUNTY, STATE COLUMBIA, COUNTY CRE.

"A SERVICE TO THE OIL AND GAS INDUSTRY"

MUD DATA
W WEIGHT
V VISCOSITY
F FILTRATE
FC FILTER CAKE
SD SAND IN %

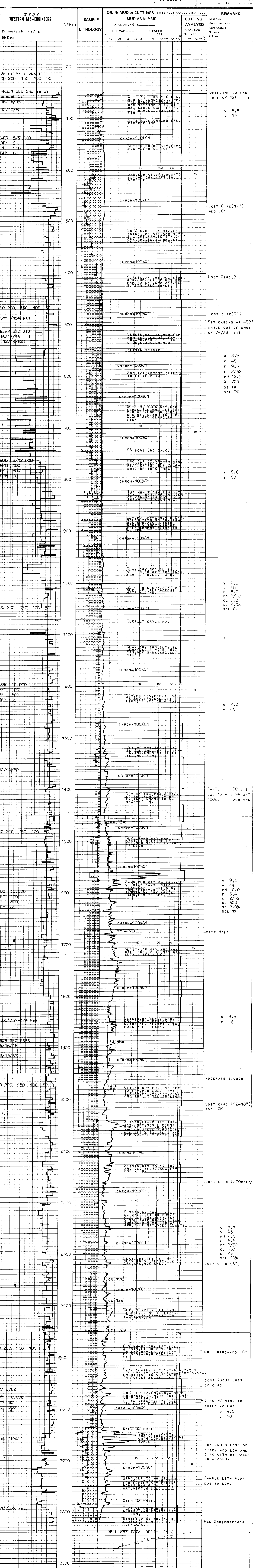
LEGEND
S SALINITY
R RESISTIVITY
RF FILTRATE RESISTIVITY
BIT DATA
NB NEW BIT
RRB REBUR BIT

OTHER DATA
TG TRIP GAS
CC CONNECTION GAS
C CARBIDE GAS

LITHOLOGY SYMBOLS
CB CORE BIT
WLCB WIRE LINE CB
CR CIRCULATE RETURNS
NR NO RETURN
DST DRILL STEM TEST
DST INTERVAL
CORE INTERVAL

REMARKS
WELL ELEV. CL. 1254.48'
KB. 1265.88'
SALINITY IN PPM CL
FILTRATE IN CC/30 MM.
GAS TRAP AGITATOR TYPE
MUD LIGNOSULFONATE
(BAROID)
TAYLOR DRILLING RIG #5

DATE 12/9/82 to 12/16/82 DEPTH 00' to 2282' ENGINEERS G. THOMAS
J. DUVALL



REICHHOLD ENERGY CORP., COLUMBIA COUNTY, OREGON, COLUMBIA COUNTY 13-34, SEC 34, T7N, R5W, W8&M