



**INCLINE**  
COMPUTED DIRECTIONAL RESULTS  
Micro-Resistivity Data

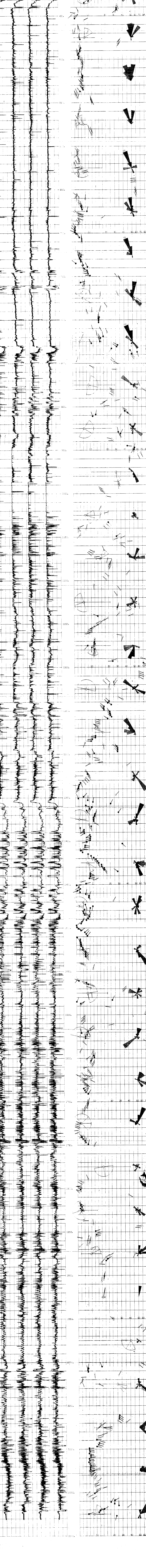
COMPANY: BPCO OIL AND GAS CO.  
WELL: COLUMBIA COUNTY #14-23  
FIELD: MIST  
COUNTY: COLUMBIA  
STATE: MISSISSIPPI

LOGGING: BPCO  
LOG NO.: 5  
LOG DATE: 5/10/87  
LOG TIME: 14:00  
LOG BY: J.B. B. / J.B. B.  
LOG CHECKED BY: J.B. B. / J.B. B.  
LOG APPROVED BY: J.B. B. / J.B. B.  
LOG DATE: 5/11/87

DEPTH - LOGGED	2725.000
DEPTH - MEASURED	2725.000
DEPTH - CORRECTED	2725.000
DEPTH - TOTAL	2725.000
DEPTH - INTERVAL	5.000
DEPTH - START	2720.000
DEPTH - STOP	2725.000
DEPTH - CENTER	2722.500
DEPTH - REFERENCE	2722.500
DEPTH - CORRELATION	2722.500
DEPTH - MAGNETIC	2722.500
DEPTH - DEPT. TRUE	2722.500
DEPTH - DEPT. MAGNETIC	2722.500
DEPTH - DEPT. CORRECTED	2722.500
DEPTH - DEPT. TOTAL	2722.500
DEPTH - DEPT. INTERVAL	5.000
DEPTH - DEPT. START	2717.500
DEPTH - DEPT. STOP	2722.500
DEPTH - DEPT. CENTER	2720.000
DEPTH - DEPT. REFERENCE	2720.000
DEPTH - DEPT. CORRELATION	2720.000
DEPTH - DEPT. MAGNETIC	2720.000
DEPTH - DEPT. DEPT. TRUE	2720.000
DEPTH - DEPT. DEPT. MAGNETIC	2720.000
DEPTH - DEPT. DEPT. CORRECTED	2720.000
DEPTH - DEPT. DEPT. TOTAL	2720.000

COMPUTATION	LOGS USED	DIAPHRAGM	LOG ANALYST	PROGRAM	V - 1.7					
CENTER	LOG	FILE	FILE	DATE	5/6/87					
REFERENCE	FILE	FILE	FILE							
COMPUTATION PARAMETERS										
DEPTH - INTERVAL	DEPTH	CORLN.	CORLN.	SEARCH	SEARCH	SEARCH	MAGNETIC	DEPT.	DEPT.	SHORT
FR. TO	IN FEET	LENGTH	STEP	ANGLE	REFERENCE	DEPTH	DECLIN.	TRUE	TRUE	AVERAGE
5192.37	424.33	FEET	5.00 F	5.00 F	52.20	BOREHOLE	75.00	18.00 E		5.00

REMARKS:  
SEARCH ANGLE SPECIFIED IN DEGREES.  
DEPTH OF INVESTIGATION IN CYCLES MEASURED PROBABLY.  
SOLID ARROWS - CORRELATION COEFFICIENT ABOVE 0.80  
OPEN ARROWS - CORRELATION COEFFICIENT BETWEEN 0.60 AND 0.80  
CORRELATION SCORES IF COEFFICIENT IS BELOW 0.30



PAO NO. 1	PAO NO. 2	PAO NO. 3	PAO NO. 4	PAO NO. 1
DEPTH	DEPTH	DEPTH	DEPTH	DEPTH
11240				

1 X 1

