

8" SONIC

SU

COMPANY: ARCO OIL AND GAS
 WELL: COLUMBIA COUNTY 14-23
 FIELD: MIST
 COUNTY: COLUMBIA
 STATE: OREGON
 LOCATION: USA
 LATITUDE: 102.9784 1099.69 E
 LOCATION: FR NW COR
 SECTION: 26 TAP: 6H
 RPT: 5H
 PERMANENT DATUM: GL
 ELEV. OF PERM. DATUM: 652.7 F
 ELEVATIONS: KBI 653.7 F
 LOG MEASURED FROM: KB
 SERVICE: DPT 652.7 F
 DRLG. MEASURED FROM: KB
 DATE: 11 AUG 86
 RUN NO: 1
 DEPTH-DRILLER: 2180.0 F
 DEPTH-LOGGER: 2180.0 F
 DEPTH-LOG INTERVAL: 2148.0 F
 TOP LOG INTERVAL: 432.0 F
 CASING-DRILLER: 433.0 F
 CASING-LOGGER: 432.0 F
 CASING-LOG INTERVAL: 9 5/8
 BIT SIZE: 8 1/2

OTHER SERVICES-
 LPT CML
 VSP
 NBT

PROGRAM
 TAPE NO:
 RS 24
 SERVICE
 ORDER NO:
 329217

TYPE FLUID IN HOLE: LIGHTSULFIDATE
 DENSITY: 18.50 LB/G
 VISCOSITY: 38.0 S
 PHI: 9.8
 FLUID LOSS: 5.8 CC
 SOURCE OF SAMPLE: FLOWLINE
 RM: 2.290 DMMH AT 75.0 BEGF
 RNF: 3.050 DMMH AT 76.0 BEGF
 RNC: 2.290 DMMH AT 76.0 BEGF
 SOURCE RMF/RNC: MEAS/MEAS
 RM AT BHT: 1.605 DMMH AT 110. BEGF
 RNF AT BHT: 2.164 DMMH AT 110. BEGF
 RNC AT BHT: 1.625 DMMH AT 110. BEGF
 TIME CIRC. STOPPED: 09:00 8/11
 TIME LOGGER ON BTH: 12:15 8/11
 MAX. REC. TEMP: 110.0 BEGF
 LOGGING UNIT NO: 0120
 LOGGING UNIT LOC: SACRAMENTO
 RECORDED BY: HARPER/KUNKLER
 WITNESSED BY: SHARP

REMARKS:
 CHLORIDES: 1500 MG/L
 DIL AND SLY RUN IN COMBINATION.
 1.5 INCH STANDOFFS USED ON DIL.
 2 CHEES USED TO CENTRALIZE SONIC.

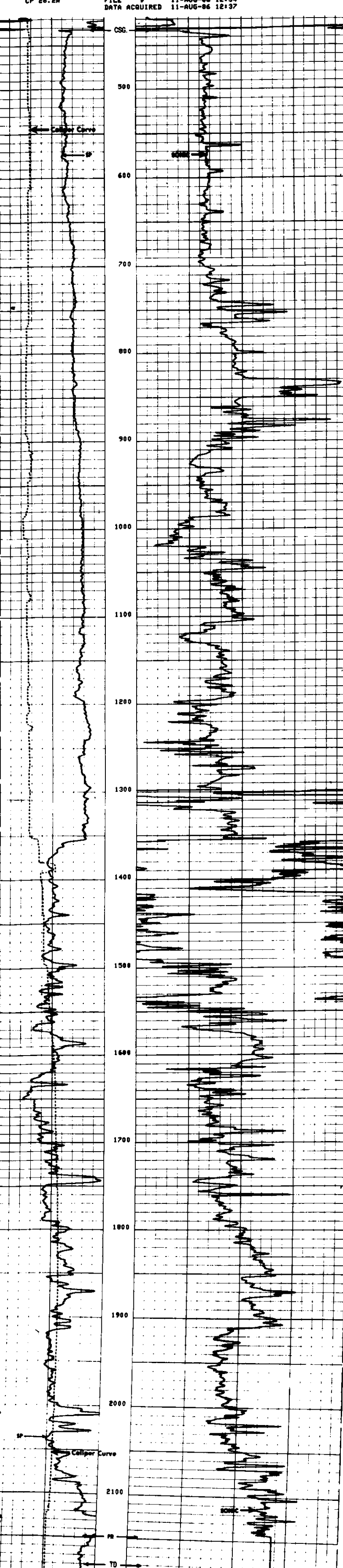
EQUIPMENT NUMBERS-
 SLS 1006 SLC 1259 MCD 305 DIS 1342
 DIC 1306 IEM 685 SLM 214

ALL INTERPRETATIONS ARE OPINIONS BASED ON INFERENCES FROM ELECTRICAL OR OTHER MEASUREMENTS AND WE CANNOT, AND DO NOT GUARANTEE THE ACCURACY OR CORRECTNESS OF ANY INTERPRETATIONS, AND WE SHALL NOT, EXCEPT IN THE CASE OF GROSS OR WILLFUL NEGLIGENCE ON OUR PART, BE LIABLE OR RESPONSIBLE FOR ANY LOSS, COSTS, DAMAGES OR EXPENSES INCURRED OR SUSTAINED BY ANYONE RESULTING FROM ANY INTERPRETATION MADE BY ANY OF OUR OFFICERS, AGENTS OR EMPLOYEES. THESE INTERPRETATIONS ARE ALSO SUBJECT TO OUR GENERAL TERMS AND CONDITIONS AS SET OUT IN OUR CURRENT PRICE SCHEDULE.

CP 20.2A FILE 9 11-AUG-86 12:58
 DATA ACQUIRED 11-AUG-86 12:37

CALC(KIN...) 6.0000 16.000
 SP (MV) -100.0 0.0 DT (US/F) 175.00 75.000

CP 20.2A FILE 9 11-AUG-86 12:54
 DATA ACQUIRED 11-AUG-86 12:37



CP 20.2A FILE 9 11-AUG-86 12:51
 DATA ACQUIRED 11-AUG-86 12:10

CALC(KIN...) 6.0000 16.000
 SP (MV) -100.0 0.0 DT (US/F) 175.00 75.000

SRAT 34.6 FEET	TT1 36.1 FEET	TT2 37.1 FEET	TT3 37.1 FEET	TT4 37.1 FEET	SCBL 37.1 FEET	ILD 9.4 FEET	SFL 6.4 FEET	SPAR 2.5 FEET
TO 37.1 FEET	SLTY 37.1 FEET	ILN 5.8 FEET	SP 2.5 FEET	TENS 2.5 FEET	NOIS 2.5 FEET			

NAME	VALUE	UNIT	NAME	VALUE	UNIT
CDTS	100.000		SPFS R-W		
DTF	109.000	US/F	DBL	56.0000	US/F
DSIN	5	US	BMCD	200	US
DSEC	6.40000	MMMD	SBR	1.00000	DMMH
DMS	OPEN		FPHI	SPHI	
DD	0.0	F	BS	0.50000	IN
PP	NORM				

TAPE NOT MADE