

HORIZON

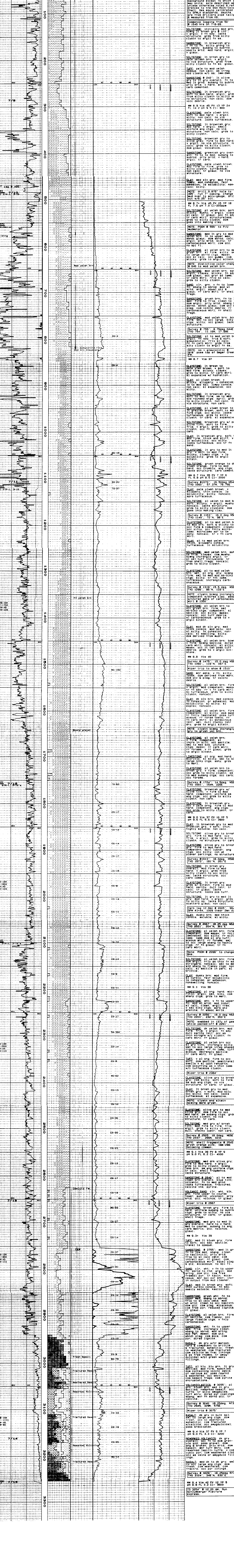
MELL LOGGING

711 St. Andrews Way
Lompoc, California 93438
(805) 733-0972

COMPANY: ENERFIN RESOURCES NORTHWEST
 WELL: C. C. 14-32-75 (Second Paul)
 LOCATION: 1198 July to July 15, 1999
 ELEVATION: Sec. 32, T7N, R5W, M.B. 6M.
 FIELD: X=128571.97, Y=878992.77
 COUNTY: GL 849 05' KB 859 05'
 STATE: Columbia, Oregon
 LOGGING DATES: July 6, 1999
 OPERATOR: Enrfin Resources Northwest
 GEOLOGIST: Dave Huggins
 DRILL REP: Rob Lucas-Production Specialties
 CONTRACTOR: Taylor Drilling Inc.
 RIG: #7
 MUD COMPANY: Jim Martin/Baker Chemical
 MUD TYPE: Gel/accu-gauges
 LOGGING GEOLOGIST: Bill Gilmore, Matt Carson

ABBREVIATIONS	SYMBOLS
CO Circulate Out	PEBBLES >2mm
LAT Logged After Trip	SAND
CG Connection Gas	SANDSTONE
MG Milder Gas	MUDSTONE
TG Trip Gas	SHALE
SG Survey Gas	MARL
NR No Returns	CLAY
NB New Bit	LIGNITE
WB Wiper Run	OLIOSTONE
COB CORE INTERVAL	LIESTONE
PP Pump Pressure	VOLCANICS
SPM Strokes per minute	TUFF
	BASALT

DRILL RATE	LITH	MINERAL	GASES	CHROMATOGRAPH	REMARKS
------------	------	---------	-------	---------------	---------



Scale: 1" = 100' units. North arrow pointing up.