

0022-165
St. Louis

2" DUAL INDUCTION-SFL

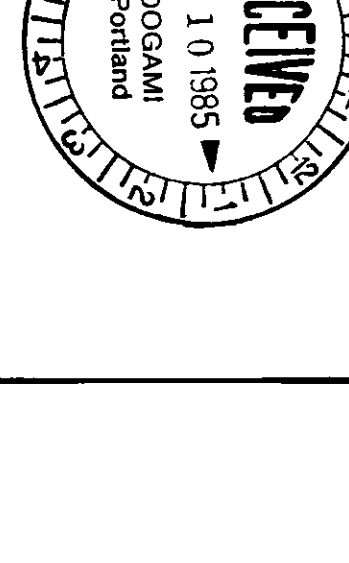
CU
Field Log

COMPANY: ARCO EXPLORATION AND TECHNOLOGY COMPANY
WELL: COLUMBIA COUNTY 22-27

FIELD: MIST GAS FIELD
COUNTY: COLUMBIA
STATE: OREGON
NATION: USA
LOCATION: 2399.07'S 89.6' 27" & NW CORNER
1180.19'S 0 53' 33" W OF NM CORNER
SEC: 27 TWP: 6N RGE: 5M

PERMANENT DATUM: GL
ELEV. OF PERM. DATUM: 850.2 F
LOG MEASURED FROM: KB
DRLG. MEASURED FROM: KB
DATE: 22 NOV 85
RUN NO: 1

DEPTH-DRILLER: 2532.0 F
DEPTH-LOGGER: 2532.0 F
BIT. LOG INTERVAL: 2506.0 F
TOP LOG INTERVAL: 416.0 F
CASING-DRILLER: 418.0 F
CASING-LOGGER: 418.0 F
CASING: 9.685
WEIGHT: 9.685
BIT SIZE: 8.75
DEPTH: 2532.0 F



OTHER SERVICES-
BHC
HDT
SAT
SUS

PROGRAM
TAPE NO: 20.24
SERIAL NO: 450593

TYPE FLUID IN HOLE: GEL-POLYMER
DENSITY: 10.20 LB/G
VISCOSITY: 82.0 S
PH: 8.2 C3
FLUID LOSS: 5.2 C3
SOURCE OF SAMPLE: FLOWLINE
RM: 3.830 OHMM AT 45.0 DEGF
RMF: 3.110 OHMM AT 45.0 DEGF
RMC: 3.950 OHMM AT 45.0 DEGF
SOURCE RMF/RMC: MEASURED / MEASURED
RM AT BHT: 1.778 OHMM AT 105. DEGF
RMF AT BHT: 1.444 OHMM AT 105. DEGF
RMC AT BHT: 1.834 OHMM AT 105. DEGF
TIME CIRC. STOPPED: 0900 11-22
TIME LOGGER ON BTM.: 20:05 11-20
MAX. REC. TEMP: 105.0 DEGF
LOGGING UNIT NO: 8126
LOGGING UNIT LOC: SACRAMENTO
RECORDED BY: REINIG/PILCH
WITNESSED BY: ANDERSON

REMARKS:
INDUCTION AND SONIC RUN IN COMBINATION.
TOOL STUCK AT 2230. SEE TENSION CURVE.
THE PULL CAUSED A DEPTH SHIFT IN LOG.
LOG IS DEPTH OFFSET TO MATCH THE DENSITY NEUTRON.
CENTRALIZERS WERE TORN FROM SONIC SONDE WHEN TOOL BROKE FREE
SONIC UNCENTRALIZED ABOVE 2200 FEET.

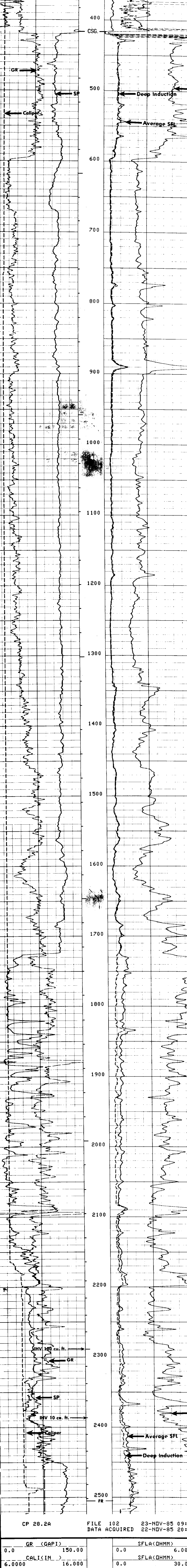
EQUIPMENT NUMBERS-
DIS-EC 1422 DIC-DA 1149 MCD-DA 1186 SLS-RC 375
SLC-FA 1261 SGC-JAA 466 SLM-DA 428 IEM-BD 685
NLM-BC 456

ALL INTERPRETATIONS ARE OPINIONS BASED ON INFERENCES FROM ELECTRICAL OR OTHER MEASUREMENTS AND WE CANNOT, AND DO NOT GUARANTEE THE ACCURACY OR CORRECTNESS OF ANY INTERPRETATIONS, AND WE SHALL NOT, EXCEPT IN THE CASE OF GROSS OR WILLFUL NEGLIGENCE ON OUR PART, BE LIABLE OR RESPONSIBLE FOR ANY LOSS, COSTS, DAMAGES OR EXPENSES INCURRED OR SUSTAINED BY ANYONE RESULTING FROM ANY INTERPRETATION MADE BY ANY OF OUR OFFICERS, AGENTS OR EMPLOYEES. THESE INTERPRETATIONS ARE ALSO SUBJECT TO OUR GENERAL TERMS AND CONDITIONS AS SET OUT IN OUR CURRENT PRICE SCHEDULE.

CP 28.2A FILE 103 23-NOV-85 07:59
DATA ACQUIRED 22-NOV-85 20:55

EVENT MARK SUMMARY:
OUTPUT INTERVAL DEPTH TRACK
BETWEEN PIPS EDGE
IHV 10.0000 F3 LEFT EDGE

GR (GAPI)	0.0	150.00	SFLA(OHMM)	0.0	6.0000
CALI(IN)	6.0000	16.0000	SFLA(OHMM)	0.0	30.0000
SP (MV)	-100.0	0.0	ILD (OHMM)	0.0	30.0000 1000.0 0.0



CP 28.2A FILE 102 23-NOV-85 09:43
DATA ACQUIRED 22-NOV-85 20:01

GR (GAPI)	0.0	150.00	SFLA(OHMM)	0.0	6.0000
CALI(IN)	6.0000	16.0000	SFLA(OHMM)	0.0	30.0000
SP (MV)	-100.0	0.0	ILD (OHMM)	0.0	30.0000 1000.0 0.0

SENSOR MEASURE POINT TO TOOL ZERO

SRAT 41.4 FEET	AMPL 43.9 FEET
TT1 42.9 FEET	CBL 43.9 FEET
TT2 40.2 FEET	TT2 43.9 FEET
TO 43.9 FEET	TT4 39.2 FEET
SLTT 43.9 FEET	TT 43.9 FEET
GR 64.1 FEET	SCBL 43.9 FEET
ILD 9.4 FEET	CALI 31.8 FEET
SFL 6.4 FEET	ILM 5.8 FEET
SPAR 2.5 FEET	SP 2.5 FEET
NOIS 2.5 FEET	TENS 2.5 FEET

PARAMETERS

NAME	VALUE	UNIT	NAME	VALUE	UNIT
CDTS	100.000		SPFS	R-H	
DTF	189.000	US/F	DTM	56.0000	US/F
DSIN	5	US	DDEL	200	US
WMUD	10.2000	LB/G	DWCO	512	
SBR	1.00000	OHMM	DSEC	3.70000	MMHO
FPHI	SPHI		MSEC	6.40000	MMHO
FNUM	.620000		FEXP	2.15000	
BHS	OPEN		CSIZ	9.62500	IN
DO	0.0	F	BS	8.25000	IN
PP	NDRM				

TAPE NOT MADE