



COMPANY: REICHHOLD ENERGY CORPORATION  
 WELL: COLUMBIA COUNTY 23-4  
 FIELD: MIST  
 COUNTY: OREGON  
 STATE: OREGON

LOCATION: 1666' NORTH & 436' WEST  
 SEC: 4  
 CORNER: DF SOUTH 1/4 CORNER  
 TWP: 6N  
 RGE: 5W

PERMANENT DATUM: GL  
 ELEV. OF PERM. DATUM: 745.1  
 LOG MEASURED FROM: KB  
 DRLG. MEASURED FROM: KB

ELEVATIONS:-  
 KB: 756.5  
 DF: 745.1  
 GL: 745.1

DATE: 29 NOV 84  
 RUN NO: 1

DEPTH-DRILLER: 3024.0  
 DEPTH-LOGGER: 3023.0  
 BTM. LOG INTERVAL: 3006.0  
 TOP LOG INTERVAL: 2000.0  
 CASING-DRILLER: 470  
 CASING-LOGGER: 478  
 BIT SIZE: 7 7/8"  
 DEPTH: 3024

RECEIVED - PILD  
 JAN 18 1985  
 DEPT. OF GEOLOGY  
 2 UNIVERSITY AVENUE

OTHER SERVICES:-  
 DIL  
 SONIC  
 HDT

PROGRAM  
 TAPE NO:  
 SERVICE  
 ORDER NO:  
 432179

TYPE FLUID IN HOLE: GEL/LIGND.  
 DENSITY: 9.7 LB/G  
 VISCOSITY: 40.0 S  
 PH: 9.0  
 FLUID LOSS: 5.6 C3  
 SOURCE OF SAMPLE: FLOWLINE  
 RM: 3.010 DHMM AT 52.0 DEGF  
 RMF: 3.350 DHMM AT 42.0 DEGF  
 RMC: 3.720 DHMM AT 47.0 DEGF  
 SOURCE RMF/RMC: MEAS/MEAS  
 RM AT BHT: 1.675 DHMM AT 99.0 DEGF  
 RMF AT BHT: 1.548 DHMM AT 99.0 DEGF  
 RMC AT BHT: 1.895 DHMM AT 99.0 DEGF  
 TIME CIRC. STOPPED: 18:00 11-28  
 TIME LOGGER ON BTM.: 12:45 11-29  
 MAX. REC. TEMP: 99.0 DEGF  
 LOGGING UNIT NO: 8178  
 LOGGING UNIT LOC: SACRAMENTO  
 RECORDED BY: SUTER  
 WITNESSED BY: ALGER/MEYER

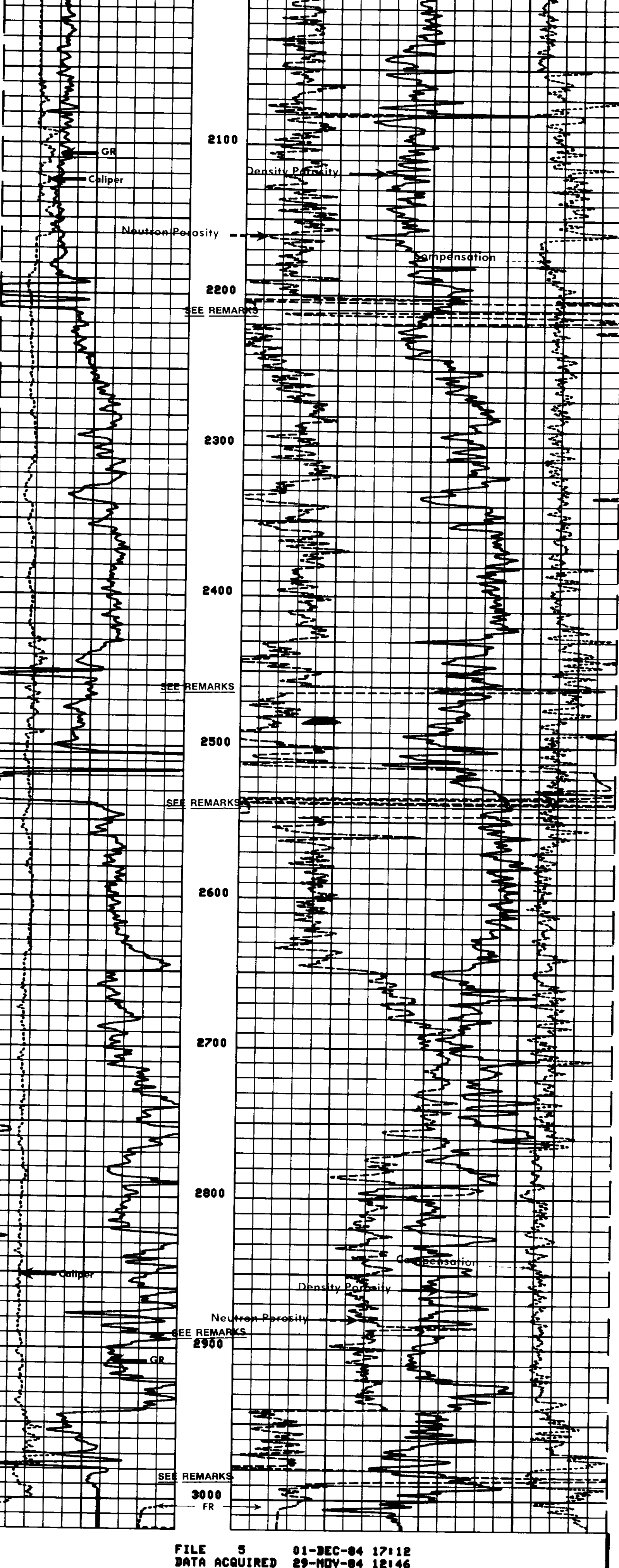
REMARKS: FDC RECALIBRATED AND RECOMPUTED UPON RETURN TO SHOP.  
 CNL/GR CURVES INVALID AT 2202-2220, 2460-2464, 2512-2547, 2884-2886, 2978-2989.

EQUIPMENT NUMBERS-  
 CNC 1208 CNB 3200 PGS 679 PDH 2045  
 GSR 8016 SFT 477 NLM 699 SGC 1528

ALL INTERPRETATIONS ARE OPINIONS BASED ON INFERENCES FROM ELECTRICAL OR OTHER MEASUREMENTS AND WE CANNOT, AND DO NOT GUARANTEE THE ACCURACY OR CORRECTNESS OF ANY INTERPRETATIONS, AND WE SHALL NOT, EXCEPT IN THE CASE OF GROSS OR WILLFUL NEGLIGENCE ON OUR PART, BE LIABLE OR RESPONSIBLE FOR ANY LOSS, COSTS, DAMAGES OR EXPENSES INCURRED OR SUSTAINED BY ANYONE RESULTING FROM ANY INTERPRETATION MADE BY ANY OF OUR OFFICERS, AGENTS OR EMPLOYEES. THESE INTERPRETATIONS ARE ALSO SUBJECT TO OUR GENERAL TERMS AND CONDITIONS AS SET OUT IN OUR CURRENT PRICE SCHEDULE.

COL (IN) .		DRHO (G/C3)	
6.0000	16.000	.2500	.25000
GR (GAPI)		DPHI	
0.0	150.00	.60000	0.0
		NPHI	
		.60000	0.0

FILE 5 01-DEC-84 17:14  
 DATA ACQUIRED 29-NOV-84 13:19



FILE 5 01-DEC-84 17:12  
 DATA ACQUIRED 29-NOV-84 12:46

CAL (IN) .		DRHO (G/C3)	
6.0000	16.000	.2500	.25000
GR (GAPI)		DPHI	
0.0	150.00	.60000	0.0
		NPHI	
		.60000	0.0

SENSOR MEASURE POINT TO TOOL ZERO

NCNL 18.0 FEET GR 26.5 FEET  
 FFBC 2.7 FEET FCNL 18.0 FEET  
 CALI 2.7 FEET NFCL 2.7 FEET  
 NRAT 18.0 FEET TENS -.2 FEET

PARAMETERS

NAME	VALUE	UNIT	NAME	VALUE	UNIT
HC	CALI		PSNR	2.27000	
FD	1.00000	G/C3	MATR	SAND	
FBCC	ALLD		MDEN	2.65000	G/C3
FEXP	2.00000		BHF	WATE	
BHS	OPEN		BNS	1.00000	
DD	0.0	F	BS	7.07500	IN
PP	RECO				

TAPE NOT MADE