

23-04-105

Schlumberger

2 - SONIC

CSU

COMPANY: REICHOLD ENERGY CORPORATION  
 WELL: COLUMBIA COUNTY 23-4  
 FIELD: MIST  
 COUNTY: COLUMBIA  
 STATE: OREGON  
 LOCATION: 1666 NORTH & 436 WEST  
 SEC: 4 OF SOUTH 1/4 CORNER  
 OF SOUTH 1/4 TWP: 6N  
 RGE: 5W

PERMANENT DATUM: GL  
 ELEV. OF PERM. DATUM: 745.1 F  
 LOG MEASURED FROM: KB  
 DRLG. MEASURED FROM: KB  
 ELEVATIONS-  
 KB: 796.5 F  
 DL: 745.1 F

DATE: 29 NOV 84  
 RUN NO: 1

DEPTH-DRILLER: 3024.0 F  
 DEPTH-LOGGER: 3022.0 F  
 BIT. LOG INTERVAL: 2982.0 F  
 TOP LOG INTERVAL: 478.0 F  
 CASING-DRILLER: 470 F  
 CASING-LOGGER: 478 F  
 CASING: 8 5/8"  
 BIT SIZE: 7 7/8"  
 BIT DEPTH: 3024 F

RECEIVED - FLD  
 JAN 19 1985  
 DEPT. OF GEOLOGY  
 & MINERAL INDUSTRIES

OTHER SERVICES-  
 DIL  
 FDC/CNL/GR  
 HDT

TYPE FLUID IN HOLE: GEL/LIGNO.  
 DENSITY: 9.7 LB/G  
 VISCOSITY: 40.0 S  
 PH: 9.0  
 FLUID LOSS: 5.6 C3  
 SOURCE OF SAMPLE: FLOWLINE  
 RM: 3.010 OHMM AT 52.0 DEGF  
 RMF: 3.350 OHMM AT 42.0 DEGF  
 RMC: 3.720 OHMM AT 47.0 DEGF  
 SOURCE RMF/RMC: MEAS/MEAS  
 RM AT BHT: 1.691 OHMM AT 98.0 DEGF  
 RMF AT BHT: 1.563 OHMM AT 98.0 DEGF  
 RMC AT BHT: 1.913 OHMM AT 98.0 DEGF

TIME CIRC. STOPPED: 18:00 11-28  
 TIME LOGGER ON BTM.: 06:42 11-29  
 MAX. REC. TEMP: 98.0 DEGF  
 LOGGING UNIT NO: 8178  
 LOGGING UNIT LOC: SACRAMENTO  
 RECORDED BY: SUTER  
 WITNESSED BY: ALGER/MEYER

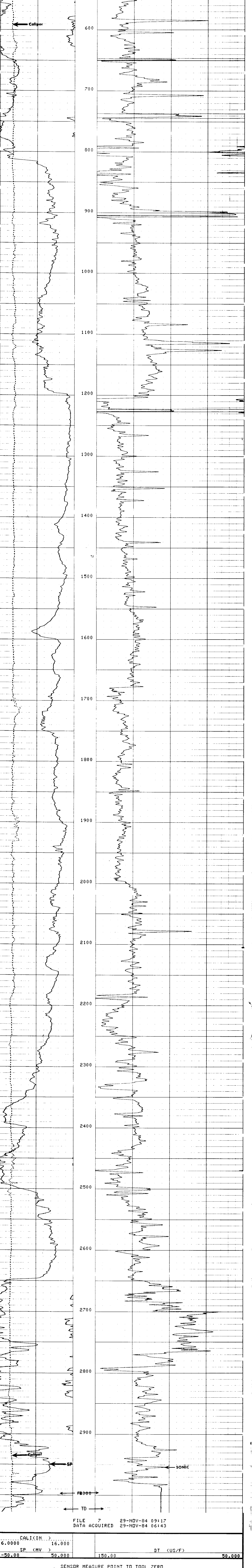
REMARKS:  
 SALINITY : 500 PPM CL-CENTRALIZATION: RUBBER FINS AND CMEZ REPEATS DONE AT TOP DUE TO HOLE CONDITIONS

EQUIPMENT NUMBERS-

DIS 1422 DIC 1149 IEM 686 MCD 1507  
 SLS 346 SLC 1589 SLM 383 SDM 1033

ALL INTERPRETATIONS ARE OPINIONS BASED ON INFERENCES FROM ELECTRICAL OR OTHER MEASUREMENTS AND WE CANNOT, AND DO NOT GUARANTEE THE ACCURACY OR CORRECTNESS OF ANY INTERPRETATIONS, AND WE SHALL NOT, EXCEPT IN THE CASE OF GROSS OR WILLFUL NEGLIGENCE ON OUR PART, BE LIABLE OR RESPONSIBLE FOR ANY LOSS OF COSTS, DAMAGES OR EXPENSES INCURRED OR SUSTAINED BY ANYONE RESULTING FROM ANY INTERPRETATION MADE BY ANY OF OUR OFFICERS, AGENTS OR EMPLOYEES. THESE INTERPRETATIONS ARE ALSO SUBJECT TO OUR GENERAL TERMS AND CONDITIONS AS SET OUT IN OUR CURRENT PRICE SCHEDULE.

CAL (IN) 6.0000 16.000 DT (US/F) 150.00 50.000  
 SP (MV) -50.00 50.000



CAL (IN) 6.0000 16.000 DT (US/F) 150.00 50.000  
 SP (MV) -50.00 50.000

SENSOR MEASURE POINT TO TOOL ZERO

CBL	37.0	FEET	AMPL	37.0	FEET
TT3	33.3	FEET	TT4	32.3	FEET
TT1	36.0	FEET	TT2	37.0	FEET
CALI	56.1	FEET	SRAT	34.5	FEET
SFL	6.4	FEET	ILD	9.4	FEET
SP	2.5	FEET	ILM	5.7	FEET
TENS	2.5	FEET	SPAR	2.5	FEET
NOIS	28.8	FEET			

PARAMETERS

NAME	VALUE	UNIT	NAME	VALUE	UNIT
HSV1	WF1		DWS	16	
DSIN	5	US	DDEL	200	US
CDTS	100.000		DWCO	512	
DTF	189.000	US/F	DTM	55.6000	US/F
SBR	1.00000	OHMM	DSEC	3.80000	MMHO
FPHI	SPHI		MSEC	5.40000	MMHO
FNUM	1.00000		FEXP	2.00000	
BS	7.87500	IN	BHS	OPEN	
SPDR	0.0		DD	0.0	F
PP	NORM				

TAPE NOT MADE

PARAMETERS

NAME	VALUE	UNIT	NAME	VALUE	UNIT
HSV1	WF1		DWS	16	
DSIN	5	US	DDEL	200	US
CDTS	100.000		DWCO	512	
DTF	189.000	US/F	DTM	55.6000	US/F
SBR	1.00000	OHMM	DSEC	3.80000	MMHO
FPHI	SPHI		MSEC	5.40000	MMHO
FNUM	1.00000		FEXP	2.00000	
BS	7.87500	IN	BHS	OPEN	
SPDR	0.0		DD	0.0	F
PP	NORM				

TAPE NOT MADE