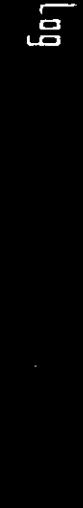


CL 88-19-65

Strohberger

2" SONIC LOG



Field Log

COMPANY: ARCO EXPLORATION COMPANY  
WELL: COLUMBIA COUNTY- 823-19

FIELD: MIST-ALLCOAT  
COUNTY: COLUMBIA  
STATE: OREGON  
NATION: U.S.A.  
LOCATION: 2097.6'E AND 356.66'S  
FR WEST 1/4 CORNER  
SECT: 19 T1P: 6N

REMARKS: RGT: 5M

ELEVATIONS:  
ELEV OF PRT. DATUM: 254.1 F  
ELEV MEASURED FROM: 254.1 F  
ELEV MEASURED FROM: 254.1 F  
DRLG. MEASURED FROM: KB

DATE: 10 JUL 85  
DUN NO: 1

DEPTH-DRILLER: 3435.0 F  
DEPTH-LOGGERS: 3436.0 F  
TOP LOG INTERVAL: 3430.0 F  
TOP LOG INTERVAL: 450.0 F

CASING-DRILLER: 480 F  
CASING-LOGGERS: 9 5/8"  
RECEIVED - PILD  
JUL 11 1985  
DEPT. OF ENERGY  
SACRAMENTO, CALIF.

OTHER SERVICES-  
DIL BHC  
MID-CAL-GR  
CST

API SERIAL NO:  
36-009-001

PROGRAM  
TAPE NO:  
SERIAL NO:  
DEPT. NO:  
431981

DEPTH: 3435 F

TYPE FLUID IN HOLE: LIGNITE/DESCO  
 DENSITY: 10.3 LB/G  
 VISCOSITY: 45.0 S  
 PH: 8.8  
 FLUID LOSS: 4.2 C3  
 SOURCE OF SAMPLE: FLOWLINE  
 RM: 1.770 DHMM AT 75.0 DEGF  
 RMF: 2.450 DHMM AT 65.0 DEGF  
 RMV: 2.330 DHMM AT 65.0 DEGF  
 SOURCE RMF/RMC: MEASURED/MASURED  
 RM AT BHT: 1.170 DHMM AT 117. DEGF  
 RMF AT BHT: 1.422 DHMM AT 117. DEGF  
 RMC AT BHT: 1.352 DHMM AT 117. DEGF

TIME CIRC. STOPPED: 7/10 1130  
 TIME LOGGER ON BTM: 1513

MAX. REC. TEMP: 117.0 DEGF

LOGGING UNIT NO: 8057  
 LOGGING UNIT LOC: SACRAMENTO  
 RECORDED BY: ANDERSEN  
 WITNESSED BY: BUKEMA

REMARKS:  
 950 PPM CHLORIDES  
 INDUCTION AND SONIC RUN IN COMBINATION.

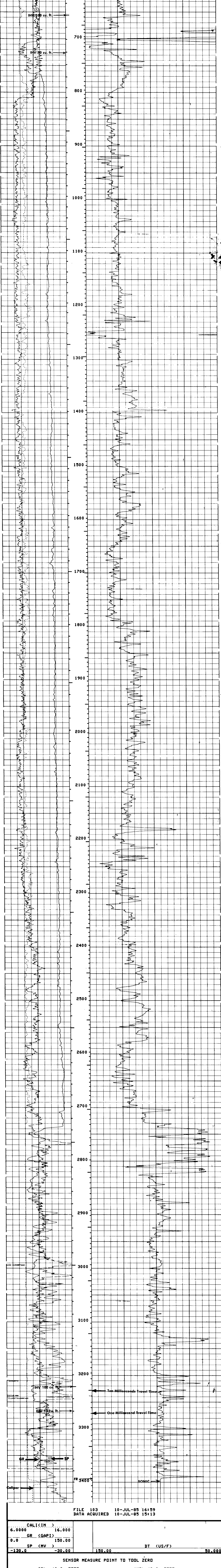
EQUIPMENT NUMBERS-  
 DIS-EC 567 DIC-D 552 MCD-D 1237 SLS-RC 252  
 SLC-FA 1321 IEM-B 304 SLM-DA 383

ALL INTERPRETATIONS ARE OPINIONS BASED ON INFERENCES FROM ELECTRICAL OR OTHER MEASUREMENTS AND WE CANNOT, AND DO NOT GUARANTEE THE ACCURACY OR CORRECTNESS OF ANY INTERPRETATIONS, AND WE SHALL NOT, EXCEPT IN THE CASE OF GROSS OR WILLFUL NEGLIGENCE ON OUR PART, BE LIABLE OR RESPONSIBLE FOR ANY LOSS, COSTS, DAMAGES OR EXPENSES INCURRED OR SUSTAINED BY ANYONE RESULTING FROM ANY INTERPRETATION MADE BY ANY OF OUR OFFICERS, AGENTS OR EMPLOYEES. THESE INTERPRETATIONS ARE ALSO SUBJECT TO OUR GENERAL TERMS AND CONDITIONS AS SET OUT IN OUR CURRENT PRICE SCHEDULE.

FILE 103 10-JUL-85 17:07  
 DATA ACQUIRED 10-JUL-85 16:08

CALI (IN )	6.0000	16.000		
GR (GAPI)	0.0	150.00		
SP (MV )	-130.0	-30.00	150.00	50.000
			DT (US/F)	

FILE 103 10-JUL-85 17:04  
 DATA ACQUIRED 10-JUL-85 16:08



FILE 103 10-JUL-85 16:159  
 DATA ACQUIRED 10-JUL-85 15:13

CALI (IN )	6.0000	16.000		
GR (GAPI)	0.0	150.00		
SP (MV )	-130.0	-30.00	150.00	50.000
			DT (US/F)	

SENSOR MEASURE POINT TO TOOL ZERO

CBL	43.9	FEET	AMPL	43.9	FEET
TT3	40.1	FEET	TT4	39.1	FEET
DSIN	5	US	DDEL	200	US
CDTS	100.000		DMCO	512	
DTF	189.000	US/F	DTM	56.0000	US/F
SBR	1.00000	DHMM	MSEC	6.00000	MMMD
FPHI	SPHI		SP	6.4	FEET
BS	8.75000	IN	SP	2.3	FEET
SPDR	0.0		TENS	2.5	FEET
PP	NDRM				

PARAMETERS

NAME	VALUE	UNIT	NAME	VALUE	UNIT
MSV1	HF1		DWS	16	
DSIN	5	US	DMCO	200	US
CDTS	100.000		DTM	56.0000	US/F
DTF	189.000	US/F	MSEC	6.00000	MMMD
SBR	1.00000	DHMM	BHS	OPEN	
FPHI	SPHI		DD	0.0	F
BS	8.75000	IN			
SPDR	0.0				
PP	NDRM				

TAPE NOT MADE