

COMPANY: REICHHOLD ENERGY CORP. **RECEIVED-PTN**
 WELL: COLUMBIA COUNTY #23-22 FEB 7 1984
 FIELD: MIST
 COUNTY: COLUMBIA
 STATE: OREGON
 LOCATION: 303.79'S & 1768.59'E
 FROM WEST 1/4 CRN DF
 SEC: 22 RGE: 5M
 PERMANENT DATUM: GL ELEVATIONS:
 ELEV. OF PERM. DATUM: 565.8
 KB1 577.2
 LOG MEASURED FROM: KB
 DF1 565.8
 DRLG. MEASURED FROM: KB
 DATE: 16 DEC 83
 RUN NO: 1
 DEPTH-DRILLER: 2028.0
 DEPTH-LOGGER: 2028.0
 BITM. LOG INTERVAL: 1986.0
 TOP LOG INTERVAL: 335.0
 CASING-DRILLER: 335
 CASING-LOGGER: 335
 CASING: 8.625
 BIT SIZE: 7.875
 DEPTH: 2028

OTHER SERVICES-
 DTL
 HDT

PROGRAM
 TAPE NO:
 24.2
 SERVICE
 ORDER NO:
 383419

TYPE FLUID IN HOLE: GEL/LIGNO
 DENSITY: 12.2 LB/G
 VISCOSITY: 62.0 S
 PH: 9.5
 FLUID LOSS: 4.6 C3
 SOURCE OF SAMPLE: FLOWLINE
 RM: 1.780 DHMM AT 65.0 DEGF
 RMF: 2.240 DHMM AT 42.0 DEGF
 RMC: 3.750 DHMM AT 42.0 DEGF
 SOURCE RMF/RMC: MEASURED/MEASURED
 RM AT BHT: 1.059 DHMM AT 114. DEGF
 RMF AT BHT: 0.907 DHMM AT 114. DEGF
 RMC AT BHT: 1.518 DHMM AT 114. DEGF
 TIME CIRC. STOPPED: 1400 12/16
 TIME LOGGER ON BTM.: 1730 12/16
 MAX. REC. TEMP: 114.0 DEGF
 LOGGING UNIT NO: 8126
 LOGGING UNIT LOC: SACRAMENTO
 RECORDED BY: BORATKO
 WITNESSED BY: ALGER

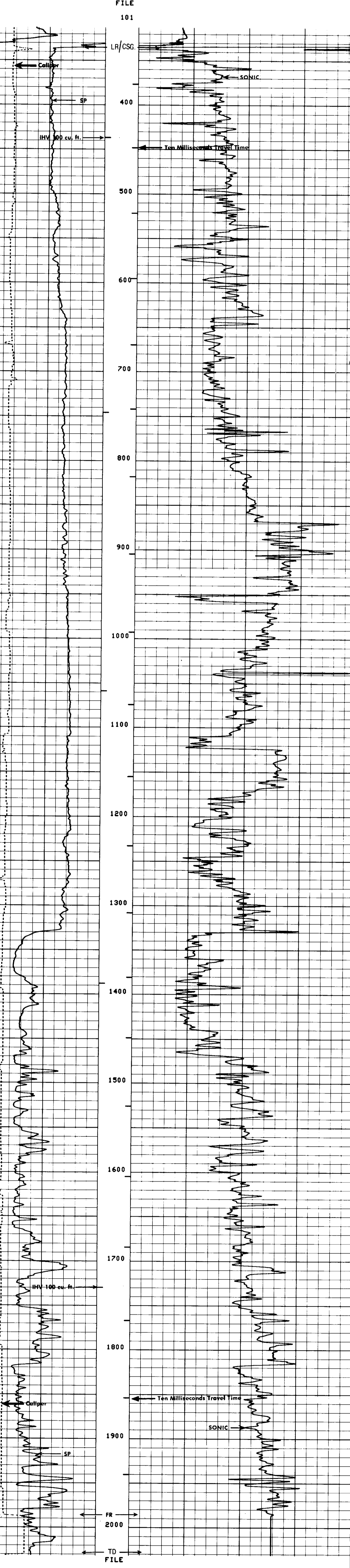
REMARKS:

EQUIPMENT NUMBERS-
 DIS 1342 DIC 1359 SLS 1082 SLC 1321

ALL INTERPRETATIONS ARE OPINIONS BASED ON INFERENCES FROM ELECTRICAL OR OTHER MEASUREMENTS AND WE CANNOT, AND DO NOT GUARANTEE THE ACCURACY OR CORRECTNESS OF ANY INTERPRETATIONS, AND WE SHALL NOT, EXCEPT IN THE CASE OF GROSS OR WILLFUL NEGLIGENCE ON OUR PART, BE LIABLE OR RESPONSIBLE FOR ANY LOSS, COSTS, DAMAGES OR EXPENSES INCURRED OR SUSTAINED BY ANYONE RESULTING FROM ANY INTERPRETATION MADE BY ANY OF OUR OFFICERS, AGENTS OR EMPLOYEES. THESE INTERPRETATIONS ARE ALSO SUBJECT TO OUR GENERAL TERMS AND CONDITIONS AS SET OUT IN OUR CURRENT PRICE SCHEDULE.

FILE
 101

CALI(IN) 6.0000 16.000
 SP (MV) -100.0 0.0 DT (US/F) 175.00 75.000



FILE
 101

CALI(IN) 6.0000 16.000
 SP (MV) -100.0 0.0 DT (US/F) 175.00 75.000

SENSOR MEASURE POINT TO TENSION REFERENCE POINT					
CBL	43.9	FEET	AMPL	43.9	FEET
TT3	40.2	FEET	TT4	39.2	FEET
TT1	42.9	FEET	TT2	43.9	FEET
CALI	31.8	FEET	SRAT	41.4	FEET
SFL	6.4	FEET	ILD	9.4	FEET
SP	2.5	FEET	ILM	5.8	FEET
TENS	.0	FEET	SPAR	2.5	FEET
NDIS	35.7	FEET			

PARAMETERS					
NAME	VALUE	UNIT	NAME	VALUE	UNIT
DDEL	200	US	BS	7.87500	IN
DWCD	512		DSIN	5	US
DTH	55.6000	US/F	CDT	100.000	
DSEC	6.30000	MMHO	DTF	189.000	US/F
MSEC	7.70000	MMHO	SBR	1.00000	DHMM
BHS	OPEN		FPHI	SPHI	
PP	NORM		DD	0.0	F

TAPE NOT MADE

COMPANY: REICHHOLD ENERGY CORP. SCHL. FR. 1986.0
 WELL: COLUMBIA COUNTY #23-22 SCHL. TD. 2028.0
 FIELD: MIST DRIL. TD. 2028.0
 COUNTY: COLUMBIA STATE OREGON Elev: KB. 577.2
 DF. N/A
 GL. 565.8