



CC 23-31-65
Bakersfield, CA
(805) 397-7472

Ventura, CA
(805) 658-7708

Anchorage, AK
(907) 561-2474

COMPANY NAHAMA & WEAGANT ENERGY CO.

WELL Co. L. CA SASSQUATCH 23-31-65

FIELD MIST

LOCATION 1970' North and 989' West from the
South corner of Sec. 31, T6N, R5W, W. 1/4, M.

COUNTY STATE Columbia, Oregon

ELEVATION 925' GL. 935' KB.

DATES 6-1-92 TO 6-6-92

DEPTHS 30'-8" TO 2170'

SPUD DATE 6-1-92

DRILLING CONTRACTOR Taylor Drilling Inc. RIG #

COMPANY GEOLOGIST Jeff Vaught

COMPANY DRILLING SUP. Rob Lucas

MUD COMPANY Beaver Drilling Co. Beaversburg, W. Va.

MUD TYPE Gel Polymer

LOGGING UNIT # 9

LOGGING GEOLOGISTS Jim Eastes, John Piddle

ABBREVIATIONS table with columns for NEW BIT, MUD WEIGHT, CASING RECORD, etc.

Legend table with symbols for SAND, SANDSTONE, SHALE, SILTSTONE, etc.

PENETRATION ANALYSIS OF RETURNS REMARKS

Table with columns for PENETRATION, OIL, GAS - UNITS, CHROMATOGRAPH - PPM, and REMARKS.

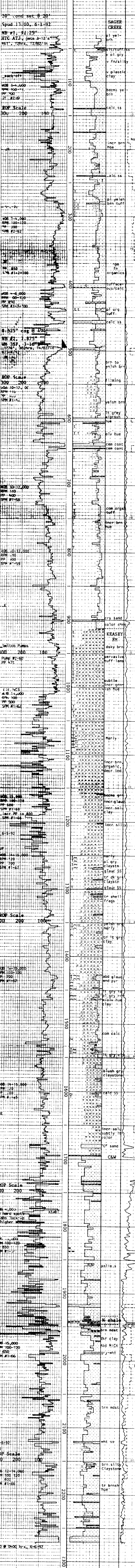


Table with columns for OIL, GAS - UNITS, CHROMATOGRAPH - PPM, and REMARKS.

REMARKS column containing detailed geological descriptions and survey data.