

COMPANY	NAHAMA AND WEAGANT ENERGY CO.	WELL	"JR BURGER JOHNSTON" #24-19-65 RD#1
FIELD	MIST	COUNTY	COLUMBIA
STATE	OREGON	LOCATION	1679'N & 1370'E
FROM SW CORNER OF:		APN SERIAL NO.	36-009-00315
SECT.	19	BLK.	6N
TWP.	6N	RANGE	5W
EMV.	628.3 F	EMV. ABOVE PERM. DATUM	10.0 F
EMV. - K.R. 638.3 F		EMV. - D.F. 637.3 F	
EMV. - G.L. 628.3 F			
Other Services:		DL / B/C / CR	
DATE	18-AUG-93	DATE	18-AUG-93
Run No.	ONE	Run No.	ONE
Depth Logger (Sec'd)	2882.0 F	Depth Logger (Sec'd)	2882.0 F
Top Log Interval	502.0 F	Top Log Interval	502.0 F
Bottom Log Interval	502.0 F	Bottom Log Interval	502.0 F
Casing-Logger	8 5/8" @ 502.0 F	Casing-Logger	8 5/8" @ 502.0 F
Bit Size	7 7/8" @ 2882.0 F	Bit Size	7 7/8" @ 2882.0 F
Type Fluid in Hole	GEL/PROP/WEAR	Type Fluid in Hole	GEL/PROP/WEAR
Visc.	95.0 LB/US	Visc.	95.0 LB/US
Dens.	44.0 S	Dens.	44.0 S
FTD. Loss	9.0	FTD. Loss	9.0
Source of Sample	FLOWLINE	Source of Sample	FLOWLINE
Run @ Meas. Temp.	1820 OHMM @ 84.0 DEGF	Run @ Meas. Temp.	1820 OHMM @ 84.0 DEGF
Run @ Meas. Temp.	800.0 OHMM @ 80.0 DEGF	Run @ Meas. Temp.	800.0 OHMM @ 80.0 DEGF
Run @ Meas. Temp.	1380 OHMM @ 79.0 DEGF	Run @ Meas. Temp.	1380 OHMM @ 79.0 DEGF
Source: Fmt / Rmc	MEASURED @ 97.0 DEGF	Source: Fmt / Rmc	MEASURED @ 97.0 DEGF
Run @ BHT	1593 OHMM @ 97.0 DEGF	Run @ BHT	1593 OHMM @ 97.0 DEGF
Calculation Method	0630 19-AUG-93	Calculation Method	0630 19-AUG-93
Logger on Bottom	1317 18-AUG-93	Logger on Bottom	1317 18-AUG-93
Equip. Location	9271 DEGF	Equip. Location	9271 DEGF
Recorded by	RIOAKE / HONH	Recorded by	RIOAKE / HONH
Witnessed by	RIOB / LUCAS	Witnessed by	RIOB / LUCAS

The well name, location and borehole reference data were furnished by the customer.

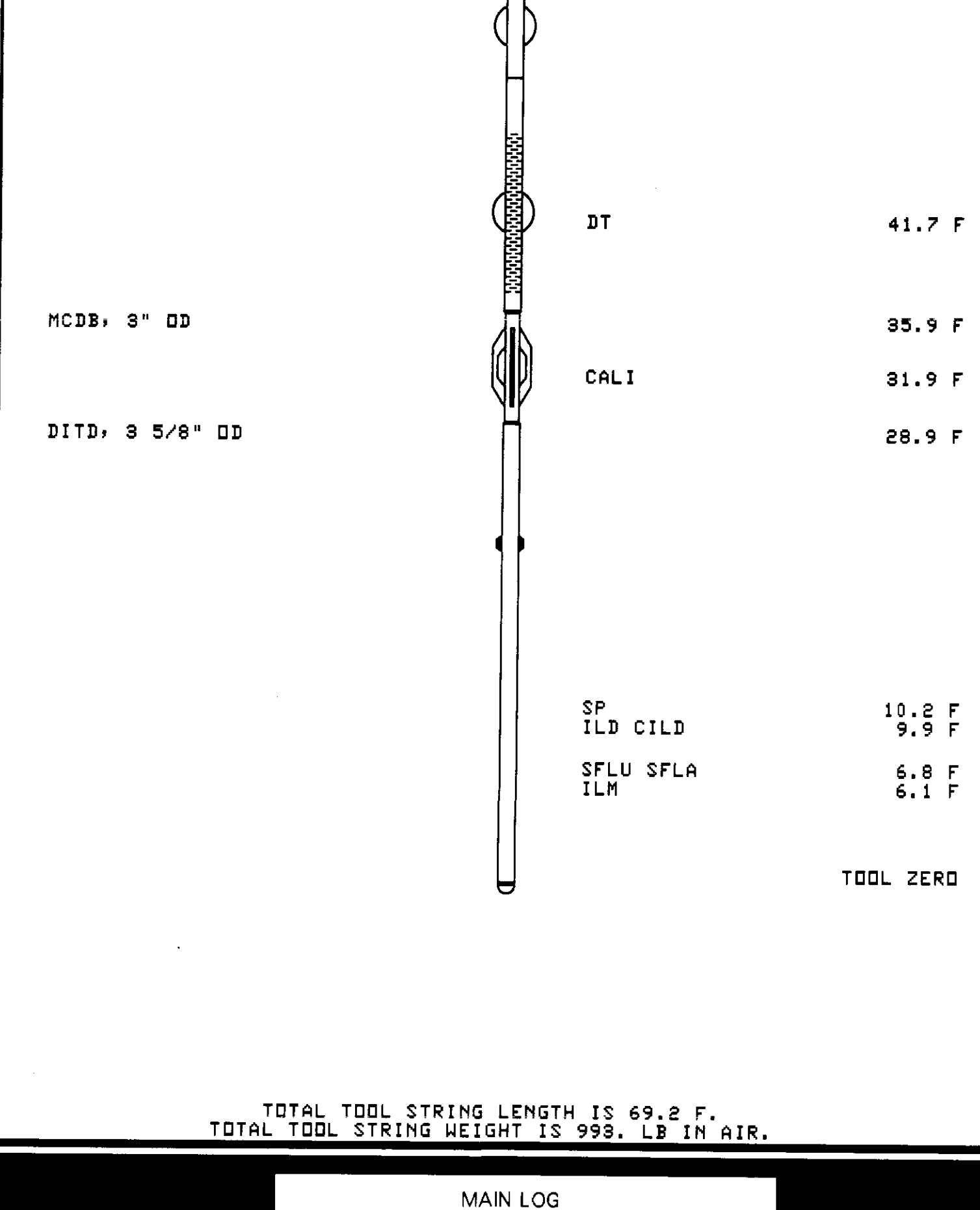
All interpretations are opinions based on inferences from electrical or other measurements and we cannot, and do not guarantee the accuracy or correctness of any interpretations, and we shall not, except in the case of gross or willful negligence on our part, be liable or responsible for any loss, costs, damages or expenses incurred or sustained by anyone resulting from any interpretations made by any of our officers, agents or employees. These interpretations are also subject to Clause 4 of our General Terms and Conditions as set out in our current Price Schedule.

Run No.	ONE
Service Order No.	624484
Drilling Fluid Level	6.0 F
Salinity	850.0 PPM
Rmf @ BHT	1606 OHMM @ 87.0 DEGF
Rmc @ BHT	1286 OHMM @ 87.0 DEGF
Logging Speed	3600.0 F/HR

EQUIPMENT DATA	
Tool Number 1	DS-EC 1422
Tool Number 2	DC-DA 1149
Tool Number 3	SLS-WA 1464
Tool Number 4	SLS-MA 114
Tool Number 5	MCD-B 1237
Tool Number 6	SGC-JC 4148
Tool Number 7	EM-BC 1317
Tool Number 8	SLM-DA 443
Tool Number 9	NLM-BC 456
Tool Number 10	
Tool Number 11	
Tool Number 12	

REMARKS:
TWO 16" STANDOFFS RUN ON INDUCTION TOOL
TWO CMEZ CENTRALIZERS RUN ON SONIC TOOL
1.15" STANDOFF RUN ON SONIC TOOL

LOGGING TOOL STRING SKETCH

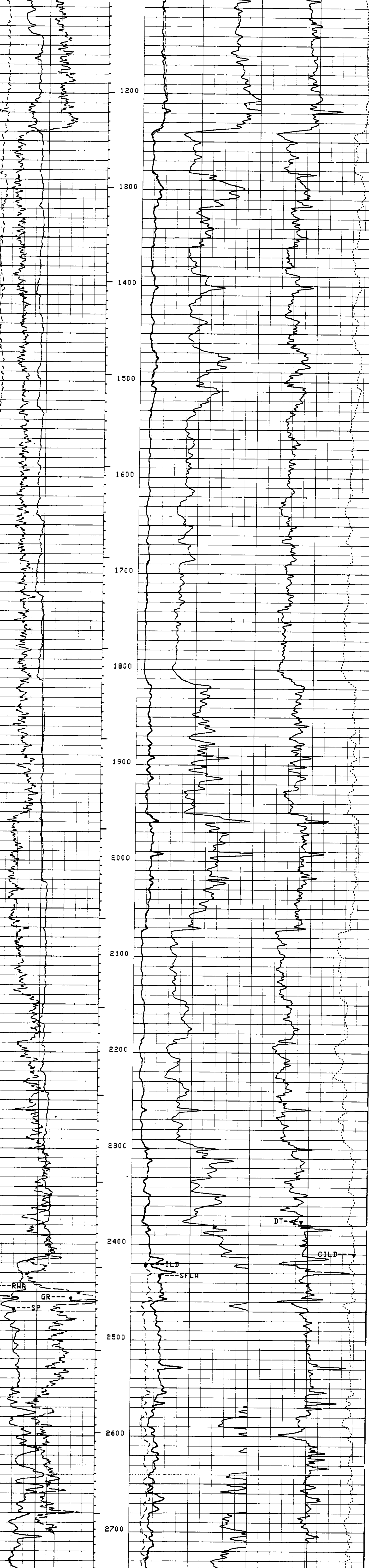


TOTAL TOOL STRING LENGTH IS 69.2 F.
TOTAL TOOL STRING HEIGHT IS 993. LB IN AIR.

MAIN LOG

CC	PWA(OHMM)	30000	CC	ILD(OHMM)	30000
CC	GR(GAPI)	50.00	CC	SFLA(OHMM)	60000
CC	SP(MV)	0.0	CC	SFLA(OHMM)	20000.0
CC		0.0	CC		0.0

CP 38.2 FILE 14 19-AUG-1993 14:14
INPUT FILE(S) 12 CREATION DATE 19-AUG-1993 13:57



CP 38.2 FILE 14 19-AUG-1993 14:15
INPUT FILE(S) 12 CREATION DATE 19-AUG-1993 13:57

CC	RWA(OHMM)	30000	CC	ILD(OHMM)	30000
CC	GR(GAPI)	50.00	CC	SFLA(OHMM)	60000
CC	SP(MV)	0.0	CC	SFLA(OHMM)	20000.0
CC		0.0	CC		0.0

SENSOR MEASURE POINT TO TOOL ZERO

SRAT 41.7 FEET	AMPL 44.1 FEET
CBFS 43.1 FEET	CBL 44.1 FEET
TT2 44.1 FEET	TT1 43.1 FEET
TT4 39.3 FEET	TT3 40.3 FEET
TT 44.1 FEET	T0 44.1 FEET
CBSL 44.1 FEET	TTSL 44.1 FEET
CALI 31.9 FEET	GR 62.7 FEET
ILM 6.1 FEET	ILD 9.9 FEET
SP 2.5 FEET	SFL 6.8 FEET
TENS 2.5 FEET	SPAR 2.5 FEET
NDIS 2.5 FEET	

PARAMETERS

NAME	VALUE	UNIT	NAME	VALUE	UNIT
SMB	DISA		VDLR	21N	
TOCA	DISA		RATE	15	HZ
DG	75		DETE	E2	
NMSG	180	US	CBLG	35	US
AMPL	2		CBL	UT	
WFM	1		SS	FAST	
TOD	DISA		DTF	189.0000	US/F
DTM	56.0000	US/F	CDTS	100.0000	
SPFS	R-H		PP	NORM	
DO	0.0	F	WMUD	9.50000	LB/G
MSEC	7.50000	MM/M	SBR	1.00000	OHMM
DSEC	4.40000	MM/M	FCD	4.50000	IN
NCJT	GSRV		FPHI	SPHI	
DWCD	512		DSIN	5	US
DDEL	200	US	SPVD	0.0	F
SINT	10.0000	M	BS	7.87500	IN
BHS	OPEN				

COMPANY	NAHAMA AND WEAGANT ENERGY CO.	SCHL. FR	2872.0 F
WELL	"JR BURGER JOHNSTON" #24-19-65 RD#1	SCHL. TD	2878.0 F
FIELD	MIST	DRLR. YD	2882.0 F
COUNTY	COLUMBIA	STATE	OREGON
		Elev.	KB 638.3 F
		DP	637.3 F
		QL	628.3 F