

Well information form including well name, location, company, and various technical specifications.

The well name, location and borehole reference data were furnished by the customer.

All interpretations are opinions based on inferences from electrical or other measurements and we cannot, and do not guarantee the accuracy or correctness of any interpretation, and we shall not, except in the case of gross or willful negligence on our part, be liable or responsible for any loss, costs, damages or expenses incurred or sustained by anyone resulting from interpretations made by any of our officers, agents or employees. These interpretations are also subject to Clause 4 of our General Terms and Conditions as set out in our current Price Schedule.

Run No. 096
Service Order No. 62437
Drilling Fluid Level 5.6 F
Bathymetry 800 C PPM

EQUIPMENT DATA
Tool Number 1 SHDS-B
Tool Number 2 SHDC-A
Tool Number 3 TCC-BB
Tool Number 4 TCM-AB '83'

REMARKS: CORRELATED TO SWIS INDUCTION LOG 8/14/93

MAIN LOG

SPEED CORRECTION NOT APPLIED

NO KNUCKLE JOINT IS USED (SDDF = -1)

ACCUMULATED INTEGRATION VALUES SUMMARY

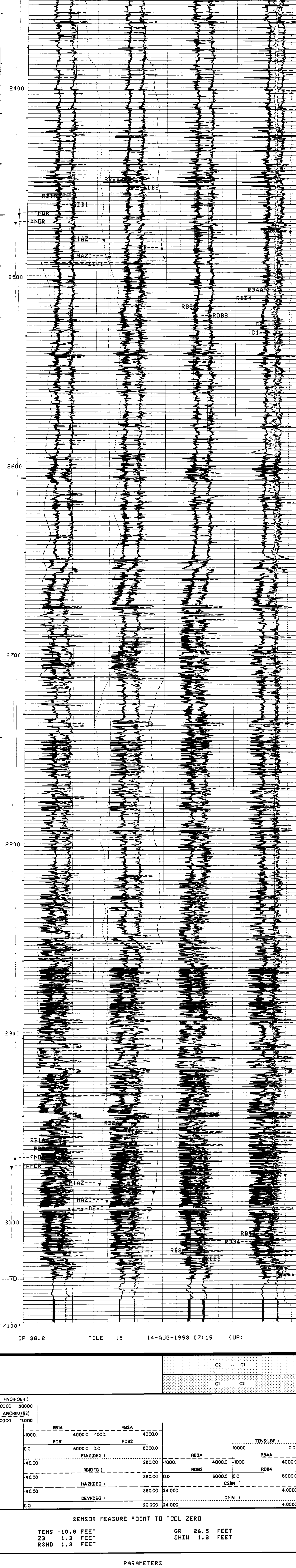
Integrated Hole Volume: 391.066 F3 FROM 3049.50 F TO 1941.00 F
Integrated Cement Volume: 269.697 F3 FROM 3049.50 F TO 1941.00 F

EVENT MARK SUMMARY: OUTPUT INTERVAL BETWEEN PIPS DEPTH TRACK EDGE

Integrated Hole Volume 10.0000 F3 LEFT EDGE
Integrated Cement Volume 10.0000 F3 RIGHT EDGE

FNCRICER 1
40000 60000
ANCRIM(SZ)
80000 10000

CP 38.2 FILE 15 14-AUG-1993 07:15 (UP)



CP 38.2 FILE 15 14-AUG-1993 07:19 (UP)

SENSDR MEASURE POINT TO TOOL ZERO

TENS -10.8 FEET ZB 1.3 FEET RSHD 1.3 FEET GR 26.5 FEET SHDW 1.3 FEET

PARAMETERS table listing various measurement parameters and their values.

REPEAT SECTION

SPEED CORRECTION NOT APPLIED

NO KNUCKLE JOINT IS USED (SDDF = -1)

ACCUMULATED INTEGRATION VALUES SUMMARY

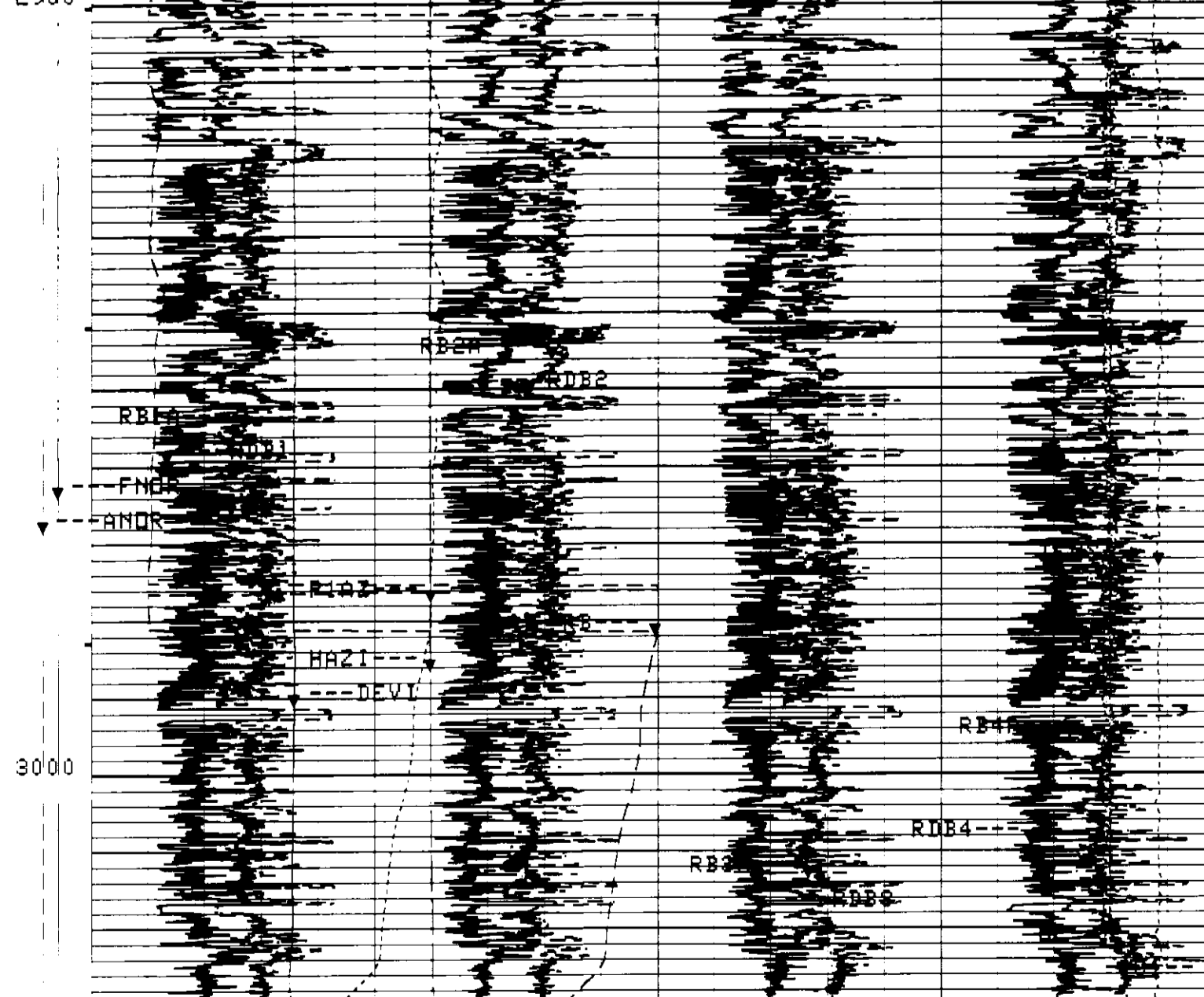
Integrated Hole Volume: 85.7599 F3 FROM 3035.50 F TO 2781.50 F
Integrated Cement Volume: 58.0279 F3 FROM 3035.50 F TO 2781.50 F

EVENT MARK SUMMARY: OUTPUT INTERVAL BETWEEN PIPS DEPTH TRACK EDGE

Integrated Hole Volume 10.0000 F3 LEFT EDGE
Integrated Cement Volume 10.0000 F3 RIGHT EDGE

FNCRICER 1
40000 60000
ANCRIM(SZ)
80000 10000

CP 38.2 FILE 14 14-AUG-1993 07:16 (UP)



CP 38.2 FILE 14 14-AUG-1993 07:17 (UP)

SENSDR MEASURE POINT TO TOOL ZERO

TENS -10.8 FEET ZB 1.3 FEET RSHD 1.3 FEET GR 26.5 FEET SHDW 1.3 FEET

PARAMETERS table listing various measurement parameters and their values.

CALIBRATION SUMMARY

BEFORE SURVEY CALIBRATION SUMMARY

PERFORMED: 14-AUG-1993 06:21 PROGRAM FILE: TDIP (VERSION 38.2 92/10/12 92/10/12)

SHDT CALIPER CALIBRATION SUMMARY

Table showing calibration data for SHDT, including measured and calibrated values for small and large diameters.

COMPANY NAHAMANA AND WEAGANT ENERGY CO. SCHL. FR 3027.0 F
WELL "R BURGER JOHNSTON" #24-19-65 SCHL. TD 3028.0 F
FIELD MIST DELV. TD 3044.0 F
COUNTY COLUMBIA STATE OREGON BLS: KB 6383 F
DF 6373 F
QL 6283 F