

# CC 24-29-75 (McCoon)

1:600 Scale

# Horizon

711 Saint Andrews Way  
Lompoc, CA 93436  
Phone 805-733-0972  
Fax 805-733-0992  
http://www.horizon-well-logging.com

351 East 92nd Suite A  
Anchorage, AK 99515  
Phone 907-563-7002  
Fax 907-563-7005

COMPANY  
WELL  
LOCATION

ELEVATION  
FIELD  
COUNTY  
API NO.  
SPUD DATE  
LOGGING DATES  
LOGGING DEPTHS  
CO. GEOLOGIST  
COMPANY MAN  
CONTRACTOR  
RIG  
MUD COMPANY  
TYPE  
LOGGING GEOLOGISTS

BIT SIZE

CASTING

Enceffin Resources  
McCoon CC 24-29-75  
Sec 29, T7N, R5W, M08&M  
X=1280130 Y=883827

GL= 951' KB= 965'  
MIST  
Columbia, OR  
36-009-00356  
11/3/2007  
11/3-10/10/2007  
50  
Dave Huggins  
Robert Vickers  
TO Well Services  
#E01  
GEO Drilling Fluids  
Gel/Cypan  
Jim Eastes Brett Rose

12.25" to 556'  
7.875" to 3023'

6.25" @ 524'

8.75" @ 524'

### Abbreviations

CO Circulate Out  
LAT Logged After Trip  
CG Connection Gas  
WG Wiper Gas  
TG Trip Gas  
SG Survey Gas  
NR No Returns  
NB New Bit  
WR Wiper Run  
WOB Wiper On Bit  
PP Pump Pressure  
SPM Strokes Per Minute  
POH Pull Out Of Hole  
LCH Lost Circulation

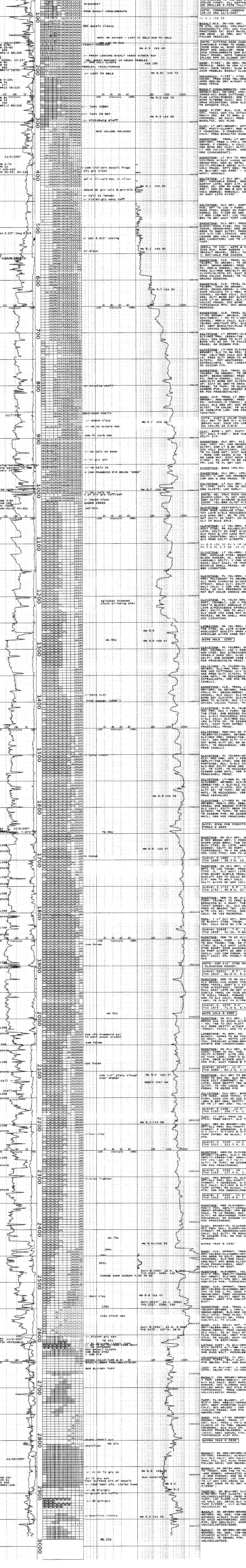
### Symbols

TUFF-ASH  
RHYNOLITE  
BASALT  
ARGILLIC ALT  
VOLCANICS  
TUFF-CRYSTAL  
VOLCANICLASTIC  
CHERT  
LIMESTONE  
MARL  
SHALE  
SILTSTONE  
SANDSTONE  
SAND  
BRECCIA

### Shows

CONGLOMERATE

Drill Rate  
Lithology Shows Gases Chromatograph Descriptions



11/10/2007  
WOB 20K  
RPM 55  
PP 930  
SPM#1-2 128

11/10/2007  
WOB 20K  
RPM 55  
PP 930  
SPM#1-2 128