

COMPANY NAHAMA AND WEAGANT ENERGY CO.  
 WELL "SOCKEYE" C.C. #31-15-65 RD. #1  
 FIELD MIST  
 COUNTY COLUMBIA STATE OREGON  
 LOCATION 6327 65' AND 17461 7' W  
 FROM N. CORNER  
 ART SERIAL NO. 36-009 00794  
 SEC. 15 TWP. 23N 21E  
 R. 1101  
 PERMIT NO. 36-009 00794  
 DATE 11/10/92  
 LOG MEASURED FROM KII  
 LOG MEASURED FROM KII  
 DATE 8 NOV 1992  
 RUN NO. ONE  
 DEPTH LOGGER (SFL) 25400.1  
 BIT LOG INTERVAL 25400.1  
 CASING LOGGER 8 5/8" - 3010.1  
 CASING LOGGER 8 5/8" - 3010.1  
 BIT SIZE 7 7/8" - 25460.1  
 TYPE FOUND IN HOLE  
 pH  
 VISC.  
 FLOWLINE  
 SOURCE OF SAMPLE  
 FLOWLINE  
 FINE @ MEAS. TEMP. 4700 OHMM @ 70.0 DEG  
 FINE @ MEAS. TEMP. 3920 OHMM @ 70.0 DEG  
 SOURCE BIT TIME MEASUREMENT 2.401 OHMM @ 94.0 DEG  
 MEASUREMENT ENDED 08:00 11:8  
 LOGGING ON BOTTOM 12:00 11:3  
 MAX. TEMP. 94.0 DEG  
 EQUIP. LOCATION 8804 SACRAMENTO  
 RECORDED BY SCOTT FLICHT  
 WITNESSED BY ROY LUCAS

The well name, location and borehole reference data were furnished by the customer.

All interpretations are opinions based on inferences from electrical or other measurements and we cannot, and do not, guarantee the accuracy or correctness of any interpretations, and we shall not, except in the case of gross or willful negligence on our part, be liable or responsible for any loss, costs, damages or expenses incurred or sustained by anyone resulting from any interpretations made by any of our officers, agents or employees. These interpretations are also subject to Clause 4 of our General Terms and Conditions as set out in our current Price Schedule.

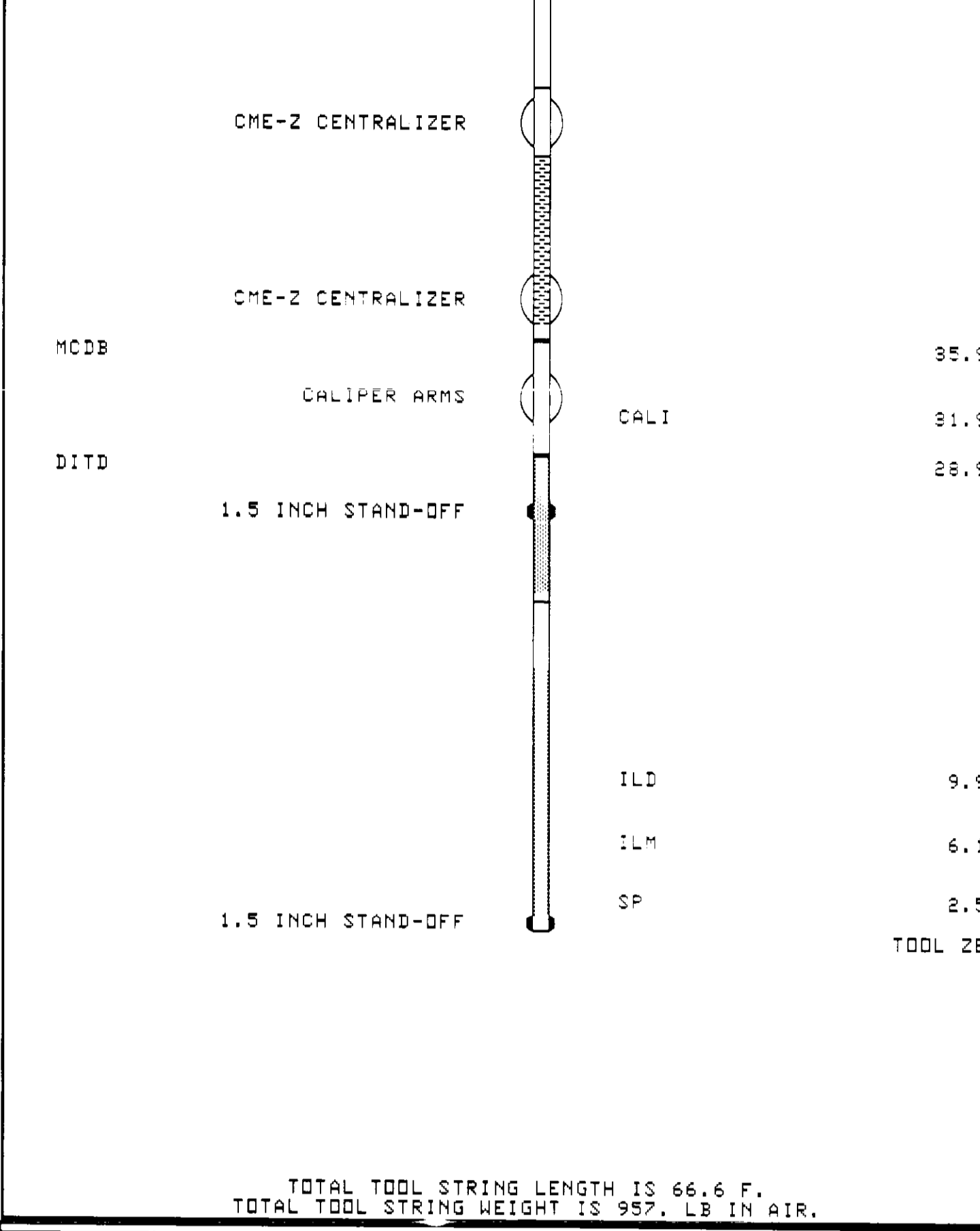
Run No.	ONE
Service Order No.	624503
Drilling Fluid Level	6.0 F
Salinity	700.0 PPM
Rmf @ BHT	3.133 OHMM @ 94 C DEG
Rmo @ BHT	2.988 OHMM @ 94 C DEG
Logging Speed	3800.0 F/H

EQUIPMENT DATA

Tool Number 1	DIS-EC 268
Tool Number 2	DIC-DA 1078
Tool Number 3	MCD-DA 237
Tool Number 4	SLS-WA 464
Tool Number 5	SLS-MA 85
Tool Number 6	SGC-JC 448
Tool Number 7	LEM-BD 304
Tool Number 8	SLM-DA 428
Tool Number 9	NLM-BC 48
Tool Number 10	
Tool Number 11	
Tool Number 12	

REMARKS:  
 16 DEGREES MAXIMUM DEVIATION.

LOGGING TOOL STRING SKETCH



TOTAL TOOL STRING LENGTH IS 66.6 F.  
 TOTAL TOOL STRING HEIGHT IS 957.1 LB IN AIR.

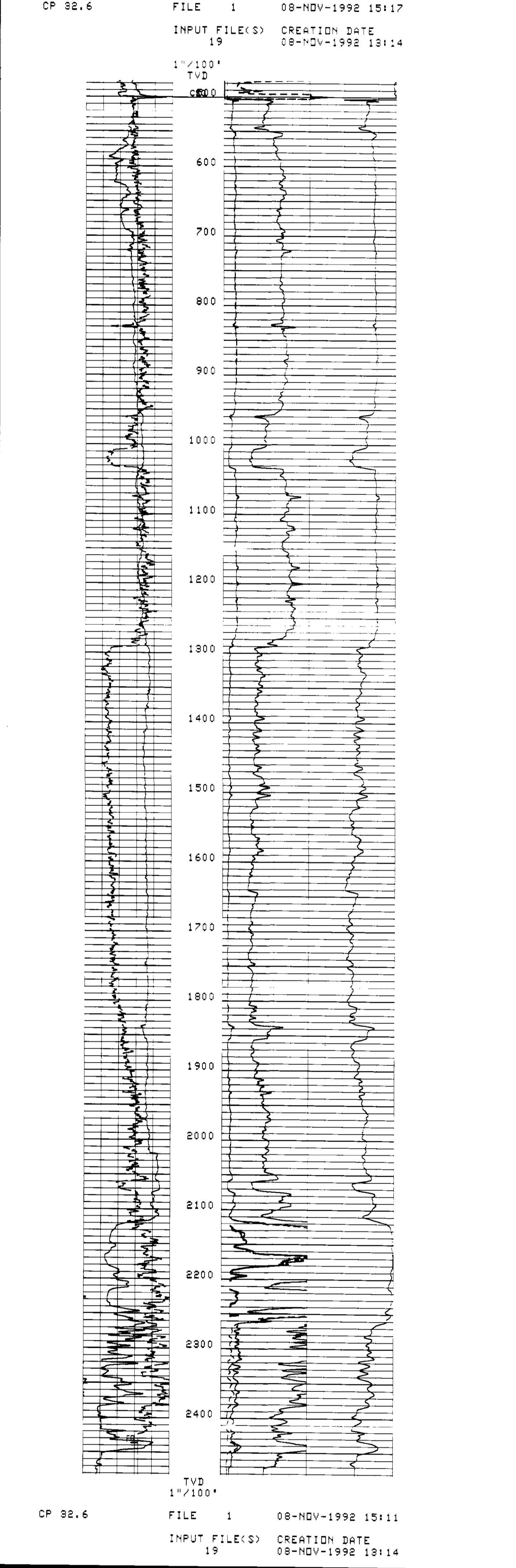
MAIN LOG

GR(GAPI)	0.0	160.00
SP(MV )	-100.0	0.0
DUMM	-1.000	4.0000
DUMM	-2.000	3.0000
DUMM	-3.000	2.0000
DUMM	-4.000	1.0000
DUMM	0.0	6.0000

ILD(OHMM)	0.0	30.000
SFLA(OHMM)	0.0	30.000
SFLA(OHMM)	0.0	6.0000
CILD(MM/M)	1000.0	0.0

SCHLUMBERGER SCHLUMBERGER

CP 32.6 FILE 1 08-NOV-1992 15:17  
 INPUT FILE(S) 19 CREATION DATE 08-NOV-1992 13:14



CP 32.6 FILE 1 08-NOV-1992 15:17  
 INPUT FILE(S) 19 CREATION DATE 08-NOV-1992 13:14

SCHLUMBERGER SCHLUMBERGER

GR(GAPI)	0.0	160.00
SP(MV )	-100.0	0.0
DUMM	-1.000	4.0000
DUMM	-2.000	3.0000
DUMM	-3.000	2.0000
DUMM	-4.000	1.0000
DUMM	0.0	6.0000

ILD(OHMM)	0.0	30.000
SFLA(OHMM)	0.0	30.000
SFLA(OHMM)	0.0	6.0000
CILD(MM/M)	1000.0	0.0

SENSOR MEASURE POINT TO TOOL ZERO

SRAT 41.7 FEET	AMPL 44.1 FEET
CBFS 43.1 FEET	CBL 44.1 FEET
TT2 44.1 FEET	TT1 43.1 FEET
TT4 39.3 FEET	TT3 40.3 FEET
TT4 44.1 FEET	TO 44.1 FEET
CBL 44.1 FEET	TTSL 44.1 FEET
CALI 31.9 FEET	GR 62.7 FEET
ILD 9.9 FEET	ILD 9.9 FEET
SP 2.5 FEET	SFL 6.1 FEET
TENS 2.5 FEET	SPAR 2.5 FEET
NDIS 2.5 FEET	

PARAMETERS

PARAMETER	VALUE	UNIT
SMB - Sonic Memory Board	DISA	
TOCA - TO Connection Status	DISA	
RATE - Firing Rate	15	HZ
DG - Downhole Gain	1.5	
DETE - Detection	2	
AMPL - Sonic Amplitude	2	
CBL - Cement Bond Log Amplitude	UT	
WFM - Waveform Mode	1	
SS - Sweep Speed	FAST	
TD - TO Delay	DISA	
DTM - Delta-T Fluid	1.89.000	US/F
DTM - Delta-T Matrix	56.0000	US/F
CDTS - Correction for Delta-T Scale, Empirical	100.0000	
SPFS - Sonic Porosity Formula Select	R-H	
PP - Playback Processing	NDRM	
DD - Depth Offset for Logical Unit L1:	0.0	F
WHUD - Weight of Mud	9.69999	LB/G
MSEC - Medium Sonda Error Correction	5.90000	MM/M
SBR - Shoulder Bed Resistivity	1.00000	OHMM
DSEC - Deep Sonda Error Correction	1.60000	MM/M
FCD - Future Casing Diameter	0.0	IN
NCJT - NGT Calibration Jig Type	GSRY	
FPHI - Formation Factor Formula Porosity	SPHI	
DIPO - Digitizer Word Count	512	
DSIN - Digitizer Sample Interval	5	US
DDEL - Digitizing Delay	200	US
SPVD - Start Point Vertical Depth	0.0	F
SINT - Sampling Interval for GCT Depth-Logging Tap	10.0000	M
BS - Bit Size	7.87500	IN
BHS - Borehole Status (Open or Cased)	OPEN	

COMPANY NAHAMA AND WEAGANT ENERGY CO. SCHL. FR 2640.0 F

WELL "SOCKEYE" C.C. #31-15-65 RD. #1 DRHL. TD 2640.0 F

FIELD MIST Elev. KB 7342.0 F

COUNTY COLUMBIA STATE OREGON DF

GL 7232.0 F