

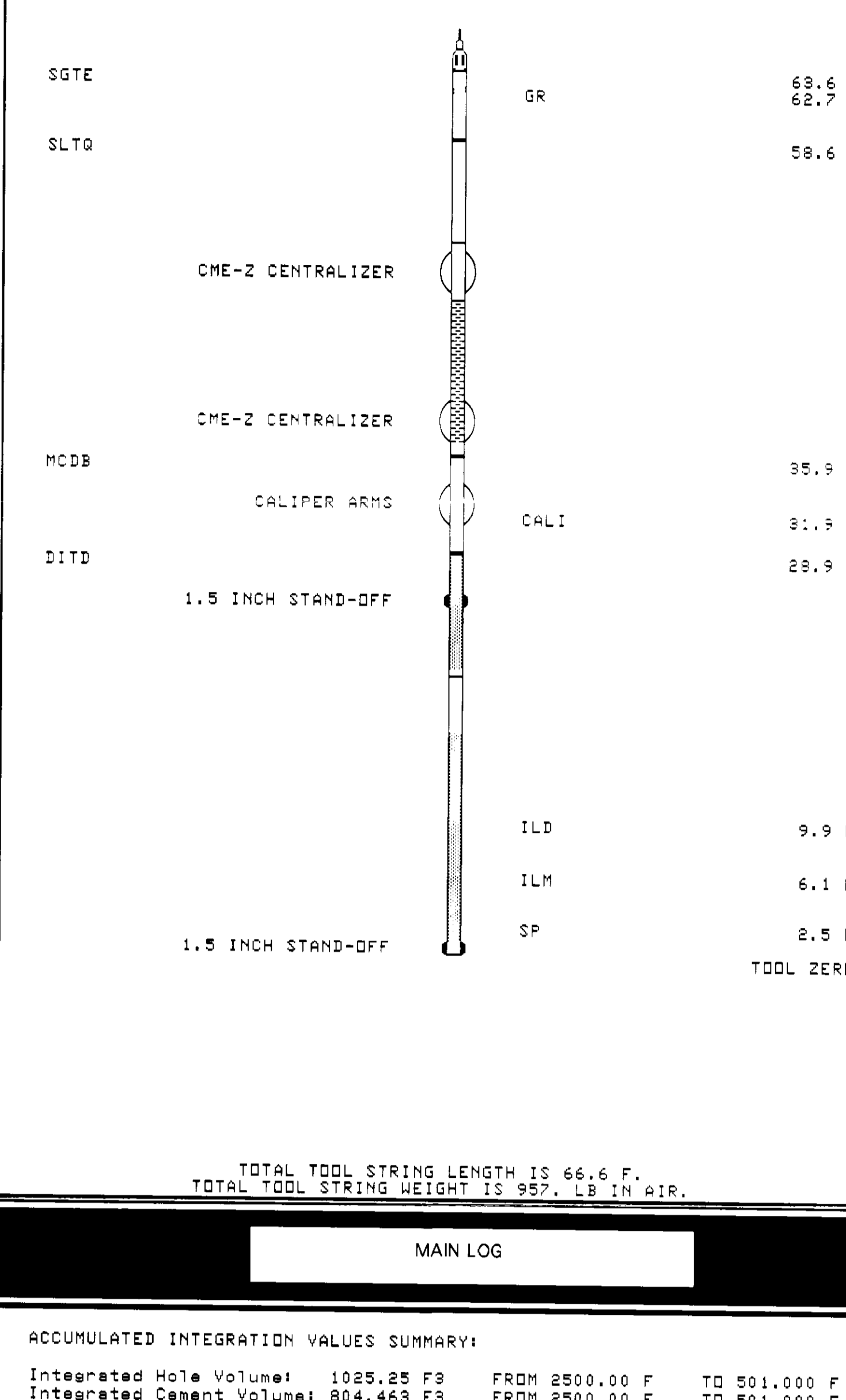
COMPANY: NAHAMA AND WEAGANT ENERGY CO.  
WELL: "SOCKEY" C.C. #31-15-65 RD. #1  
FIELD: MIST  
COUNTY: COLUMBIA  
STATE: OREGON  
LOCATION: 837 S.E. 1/4 7th & W  
FROM NE CORNER:  
SECTION: 10  
TOWNSHIP: 7N  
RANGE: 35W  
Elev: 1011  
above datum  
DATE: 08-NOV-1992  
Log Measured From: 101  
Drilling Measured From: 83  
Other Sonar:  
IBM: IBM  
CPU: IBM  
GL: 723.2 F

\*The well name, location and coordinate reference data were furnished by the customer.  
All interpretations are optional and based on inference from electrical or other measurements and we cannot, and do not, guarantee the accuracy or correctness of any interpretations, and we shall not, except in the case of gross or willful negligence on our part, be liable or responsible for any loss, cost, damages or expense incurred or sustained by anyone resulting from any interpretations made by any of our officers, agents or employees. These interpretations are also subject to Clause 4 of our General Terms and Conditions as set out in our current Price Schedule.

Run No. ONE  
Service Order No. 624603  
Drilling Fluid Level 5.0 F  
Salinity 7000 PPM  
Rmt @ BHT 84.33 CHMM @ 84.33 DEGF  
Rmo @ BHT 2989 CHMM @ 84.33 DEGF  
Logging Speed 38000 F/H

EQUIPMENT DATA  
Tool Number 1 DIS-EC 298  
Tool Number 2 DIC-DA 1078  
Tool Number 3 MCD-DA 1237  
Tool Number 4 SLS-WA 1464  
Tool Number 5 SLC-MA 65  
Tool Number 6 SGC-C 4146  
Tool Number 7 EM-BD 304  
Tool Number 8 SLM-DA 428  
Tool Number 9 NLM-BC 478  
Tool Number 10  
Tool Number 11  
Tool Number 12

REMARKS  
\*8 DEGREES MAXIMUM DEVIATION.  
CALIPER COLLAPSED DUE TO DEVIATION IN LOWER SECTION.  
CALIPER JAMMING WITH SHALE AND NOT PRESENTED.



TOTAL TOOL STRING LENGTH IS 66.6 F.  
TOTAL TOOL STRING WEIGHT IS 957 LB IN AIR.

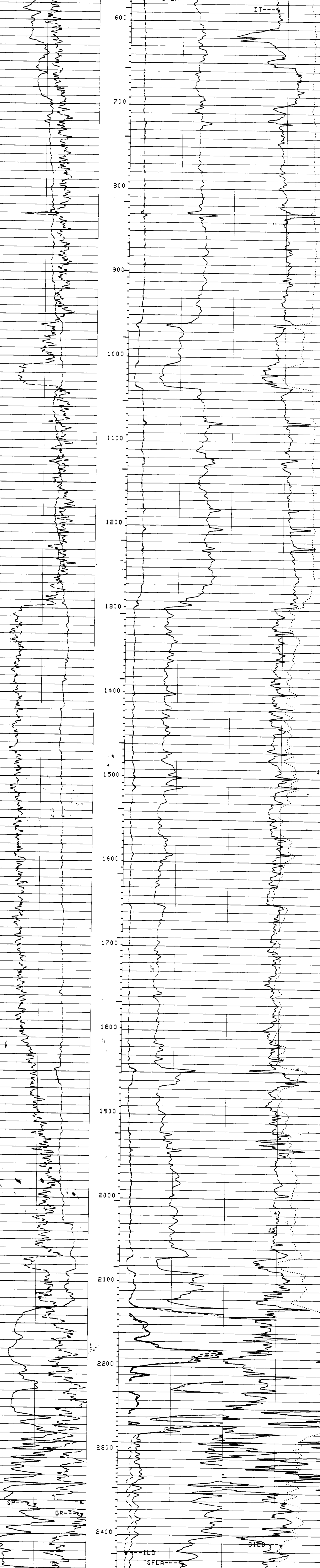
MAIN LOG

ACCUMULATED INTEGRATION VALUES SUMMARY:  
Integrated Hole Volume: 1025.25 F3 FROM 2500.00 F TO 501.000 F  
Integrated Cement Volume: 804.463 F3 FROM 2500.00 F TO 501.000 F  
(ASSUMING 4.50000 IN. O.D. CASING)  
Integrated Transit Time: .261803 S FROM 2500.00 F TO 501.000 F

EVENT MARK SUMMARY:  
OUTPUT INTERVAL DEPTH TRACK  
Integrated Transit Time .00100000 S RIGHT EDGE

SPIMV ) 0.0	LD(CHMM) 30.000	CLD(MM/M)	0.0
GR(GAPI) 0.0	SFLA(CHMM) 6.0000	DT(US/F)	0.0
0.0	SFLA(CHMM) 80.000		76.000

CP 32.6 FILE 19 08-NOV-1992 13:25  
INPUT FILE(S) CREATION DATE  
19 08-NOV-1992 11:44



CP 32.6 FILE 19 08-NOV-1992 13:15  
INPUT FILE(S) CREATION DATE  
19 08-NOV-1992 11:44

SPIMV ) 0.0	LD(CHMM) 30.000	CLD(MM/M)	0.0
GR(GAPI) 0.0	SFLA(CHMM) 6.0000	DT(US/F)	0.0
0.0	SFLA(CHMM) 80.000		76.000

SENSOR MEASURE POINT TO TOOL ZERO

SRAT 41.7 FEET	AMPL 44.1 FEET
CBFS 43.1 FEET	CBL 44.1 FEET
TTS 44.1 FEET	TTI 43.1 FEET
TT 99.9 FEET	TS 44.1 FEET
TT 44.1 FEET	TG 44.1 FEET
CBSL 44.1 FEET	TTSL 44.1 FEET
CALI 81.9 FEET	GR 62.7 FEET
ILM 6.1 FEET	SP 2.5 FEET
SP 2.5 FEET	ILD 9.9 FEET
NTS 2.5 FEET	SFL 6.8 FEET
	SPAR 2.5 FEET

PARAMETERS

PARAMETER	VALUE	UNIT
SMB - Sonic Memory Board	DISA	
TOCA - TO Connection Status	DISA	
RATE - Firing Rate	15	HZ
DG - Downhole Gain	1.5	
DETE - Detection	2	
AMPL - Sonic Amplitude	8	
CBL - Cement Bond Log Amplitude	2	
HFM - Haveform Mode	1	
SS - Sweep Speed	FAST	
TOD - TO Delay	DISA	
DTF - Delta-T Fluid	189.000	US/F
DTM - Correction for Delta-T Matrix	56.0000	US/F
CDTS - Correction for Delta-T Shale; Empirical	100.000	
SPFS - Sonic Porosity Formula Select	R-H	
PP - Playback Processing	NDR	
DD - Depth Offset for Logical Unit L11	0.0	F
WMUD - Weight of Mud	9.69999	LB/G
MSEC - Medium Sonde Error Correction	5.90000	MM/MM
SBR - Shoulder Bed Resistivity	1.00000	OHMM
DSEC - Deep Sonde Error Correction	6.60000	MM/MM
FCD - Future Casing Diameter	4.50000	IN
NCJT - NGT Calibration Jig Type	QSPH	
PFH - Porosity Formula	GSRY	
DHCD - Densitizer Word Count	SPH1	
DSIN - Densitizer Sample Interval	6.0000	US
DDEL - Densitizing Delay	0.000	US
BS - Bit Size	87500	IN
BHS - Borehole Status (Open or Cased)	OPEN	

COMPANY: NAHAMA AND WEAGANT ENERGY CO. 8CHL. FR 2494.0 F  
WELL: "SOCKEY" C.C. #31-15-65 RD. #1 8CHL. TD 2800.0 F  
FIELD: MIST DLRL. TD 2646.0 F  
COUNTY: COLUMBIA STATE: OREGON Elev: KB 734.2 F  
GL 723.2 F