



DUAL INDUCTION-SFL-SONIC
WITH LINEAR CORRELATION LOG

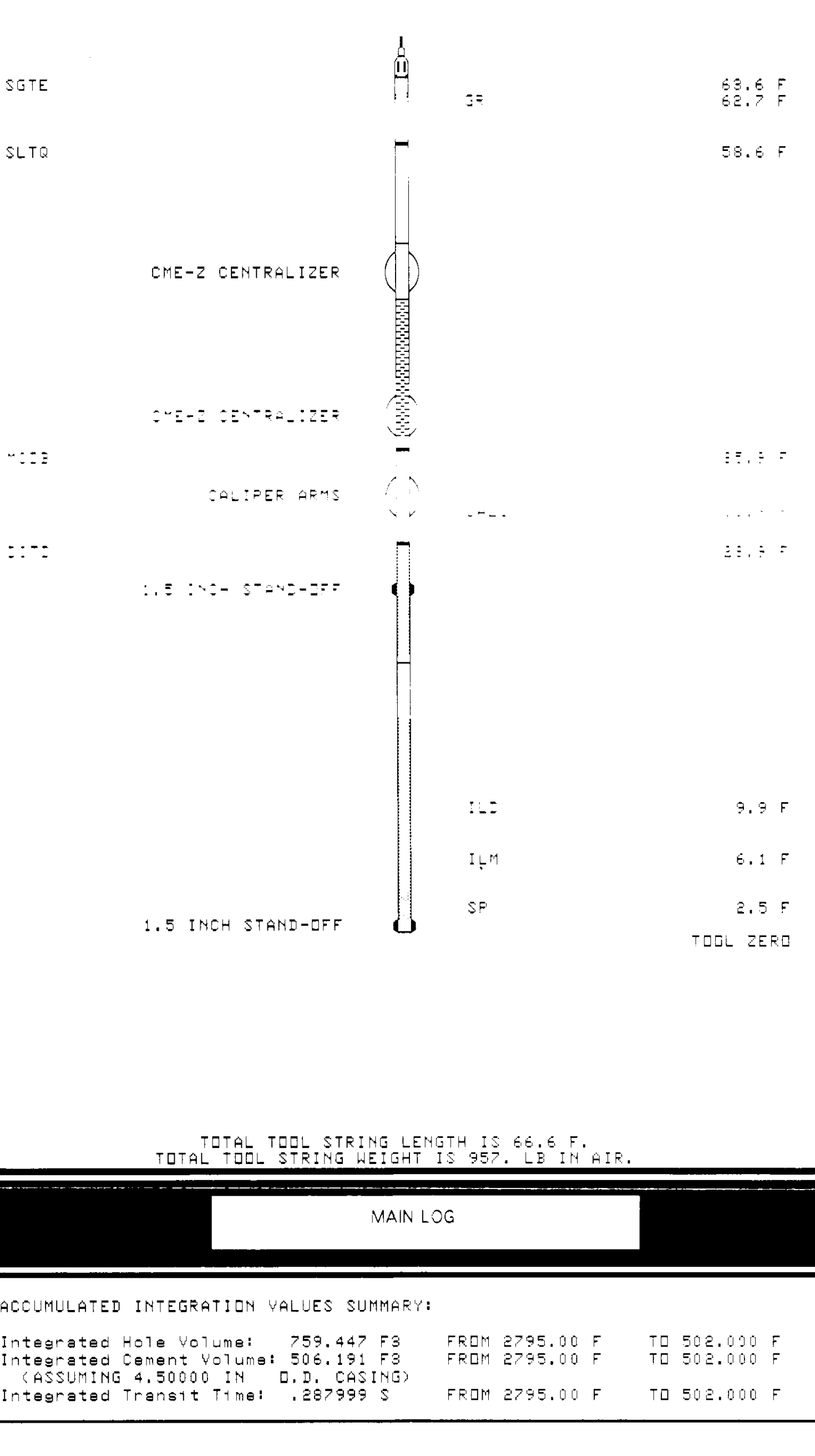
COMPANY NAHAMA AND WEAGANT ENERGY CO
WELL "SOCKEY" CC #31-15-65
FIELD MIST
COUNTY COLUMBIA
STATE OREGON

Location: NAHAMA AND WEAGANT ENERGY CO
WELL "SOCKEY" CC #31-15-65
FIELD MIST
COUNTY COLUMBIA
STATE OREGON
APR SERIAL NO 36 009 002794
Elev 1101 Above From Datum 41 279.21
Date 3 NOV 1992
Time 3:04 PM
Operator KIL
Instrument Datum 1101
Tooling Measured From KIL
Log No. 279501

Run No. 001
Service Order No. 62450
Drilling Fluid Level 60 F
Salinity 7000 PPM
Rm & BHT 2.488 CHMM @ 66C DEGF @
Rm & BHT 3.97 CHMM @ 82C DEGF @
Logging Speed 3900 C/F-H
Type Fluid in Hole GEL DRINKING
Viscosity 8.90 EIVS @ 2795.0 F
Flow Rate 7.77 @ 2795.0 F
Source of Sample 310W/INE @ 64.0 K/C @
Instr & Meas Temp 3740 CHMM @ 62.0 K/C @
Instr & Meas Temp 3000 CHMM @ 62.0 K/C @
Source Term Time MMS(MS) @ 56.0 K/C @
Time @ BHT 2066 CHMM @ 56.0 K/C @
Condition at Bottom 10320 R/S
Log on Bottom 10320 R/S
Temp Time Location 2066 CHMM @ 56.0 K/C @
Type Time Location 10320 R/S
Weather By UIC/S / IN/CI

Run No.	ONE
Service Order No.	62450
Drilling Fluid Level	60 F
Salinity	7000 PPM
Rm & BHT	2.488 CHMM @ 66C DEGF @
Rm & BHT	3.97 CHMM @ 82C DEGF @
Logging Speed	3900 C/F-H
EQUIPMENT DATA	
Tool Number 1	DIC-DC 268
Tool Number 2	DIC-DA 278
Tool Number 3	MCD-DA 237
Tool Number 4	SLS-WA 464
Tool Number 5	SLS-MA 96
Tool Number 6	SGC-C 4748
Tool Number 7	ISM-BD 304
Tool Number 8	SLS-DA 428
Tool Number 9	NLM-BC 478
Tool Number 10	
Tool Number 11	
Tool Number 12	
REMARKS:	

LOGGING CASE SPEECH



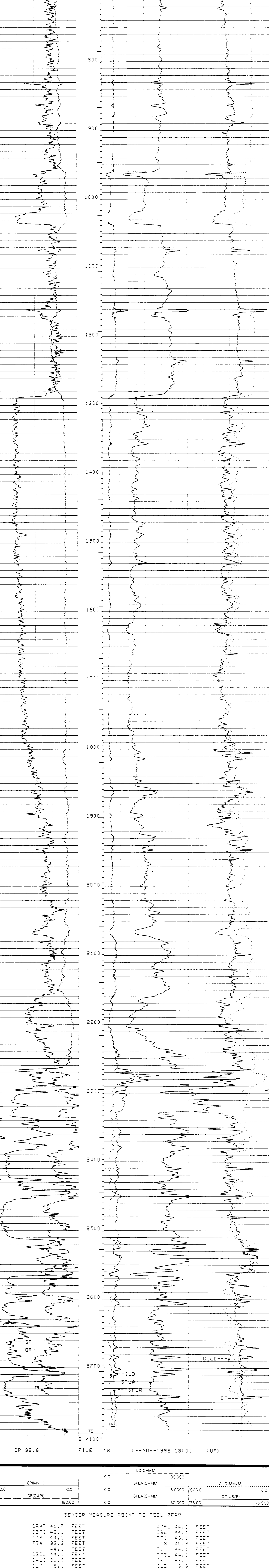
TOTAL TOOL STRING LENGTH IS 66.6 F.
TOTAL TOOL STRING WEIGHT IS 957. LB IN AIR.

MAIN LOG

ACCUMULATED INTEGRATION VALUES SUMMARY:
Integrated Hole Volume: 759.447 FB FROM 2795.00 F TO 502.000 F
Integrated Cement Volume: 506.191 FB FROM 2795.00 F TO 502.000 F
Integrated Transit Time: .287999 S FROM 2795.00 F TO 502.000 F

EVENT MARK SUMMARY:
OUTPUT INTERVAL DEPTH TRACK
Integrated Transit Time .00100000 S RIGHT EDGE

CHANGED PARAMETERS	
NAME	VALUE
DG /1	486.0



SPMV	CC	30000	ILD(MM)	CC	30000
GRIGAPI	CC	80000	SFLA(CHMM)	CC	80000
GRIGAPI	80000	7800	SFLA(CHMM)	30000	7800

PARAMETER	VALUE	UNIT
SMB	5104	BIT/CA
TOCA	1400	BIT/CA
RATM	1400	HZ
DC	1400	BT
DETE	1400	UT
AMPL	1400	UT
CBL	1400	UT
WFM	1	FAST
SS	1400	FAST
TDD	1400	DISA
DTF	1400	US/F
DTM	56.0000	US/F
CDTS	100.0000	US/F
SPFS	R-H	R-H
HMUD	9.90000	LB/G
MSEC	9.90000	MS
SSR	9.90000	MS
DSEC	64.0000	MS
FDCD	4.50000	IN
NCJT	GSPY	GSPY
FPHI	60.0000	GPHI
DUCD	12	IN
DSIN	12	US
DDIL	12	US
DDC	12	IN
STAT	1	IN

COMPANY	NAHAMA AND WEAGANT ENERGY CO.	SCHL. FR	2795.0 F
WELL	"SOCKEY" C.C. #31-15-65	SCHL. TD	2795.0 F
FIELD	MIST	Elev.	TD 2795.0 F
COUNTY	COLUMBIA	DR	KB 734.2 F
STATE	OREGON	DF	
		GL	733.2 F

Schlumberger

DUAL INDUCTION-SFL-SONIC
WITH LINEAR CORRELATION LOG