

**COMPENSATED  
ACOUSTIC VELOCITY  
LOG**

COMPANY: REICHHOLD ENERGY CORPORATION  
 WELL: COLUMBIA COUNTY 32-10  
 FIELD: MIST  
 COUNTY: COLUMBIA STATE: OREGON  
 Location: 181.42' SOUTH AND 1744.83' WEST FROM THE NORTHEAST CORNER OF E 1

WELL: COLUMBIA COUNTY 32-10  
 FIELD: MIST

Sec: 10 Type: 6N Pipe: 5W  
 G.L.: 803.3 Elev.: 819.8  
 Log Measured From: K.B. OR 16.5 Ft Above Spun Bitum  
 G.L.: 803.3

Date: 9-21-81  
 Run No.: ONE  
 Depth-Driller: Z.T. 2792  
 Depth-Mixer: S.T. 2792  
 Spun Log Date: 1800  
 Casing-Driller: J.S. 378 @ 419  
 Casing-Mixer: N.D.T. 1068 @ 419  
 Bit Size: 12 1/4  
 Type Fluid in Hole: LITHIUM SULF

Data Type: 9.6 1.49  
 pH Fluid Loss: 11.0 1.5-0ml  
 Source of Samples: CALCULATED  
 R @ Meas. Temp.: 2.1 @ 67 °F  
 R @ Meas. Temp.: 2.1 @ 60 °F  
 Source R: 1.51 @ 55 °F  
 R @ BHT: 1.68 @ 115 °F  
 Time Since Circ: 2 1/2 @ 100 HRS  
 Max. Shear Temp.: 115 °F @ BHT  
 Equip. Location: 8356 (WOODLAND)  
 Recorded by: M. BRITIER

Fold Here

Service Ticket No. 05496 Remarks:

| Change in Mud Type or Additional Samples | Type Log | Depth | Scale Up Hole | Scale Down Hole |
|--|----------|-------|---------------|-----------------|
| Date Sample No.                          |          |       |               |                 |
| Depth-Driller                            |          |       |               |                 |
| Type Fluid in Hole                       |          |       |               |                 |

| Dens. Visc.      | mi |  |  |
|------------------|----|--|--|
| pH Fluid Loss    |    |  |  |
| Source of Sample |    |  |  |

| R @ Meas. Temp. | °F | Run No. | Tool Type and No. | Pad Type | Tool Position | Other |
|-----------------|----|---------|-------------------|----------|---------------|-------|
| R @ Meas. Temp. | °F |         |                   |          |               |       |
| R @ Meas. Temp. | °F |         |                   |          |               |       |

| Source: R <sub>1</sub>   R <sub>2</sub> |               |
|---|---------------|
| R @ BHT                                 | 1.68 @ 115 °F |
| R @ BHT                                 | 1.09 @ 115 °F |
| R @ BHT                                 | 1.81 @ 115 °F |

R. M. C.

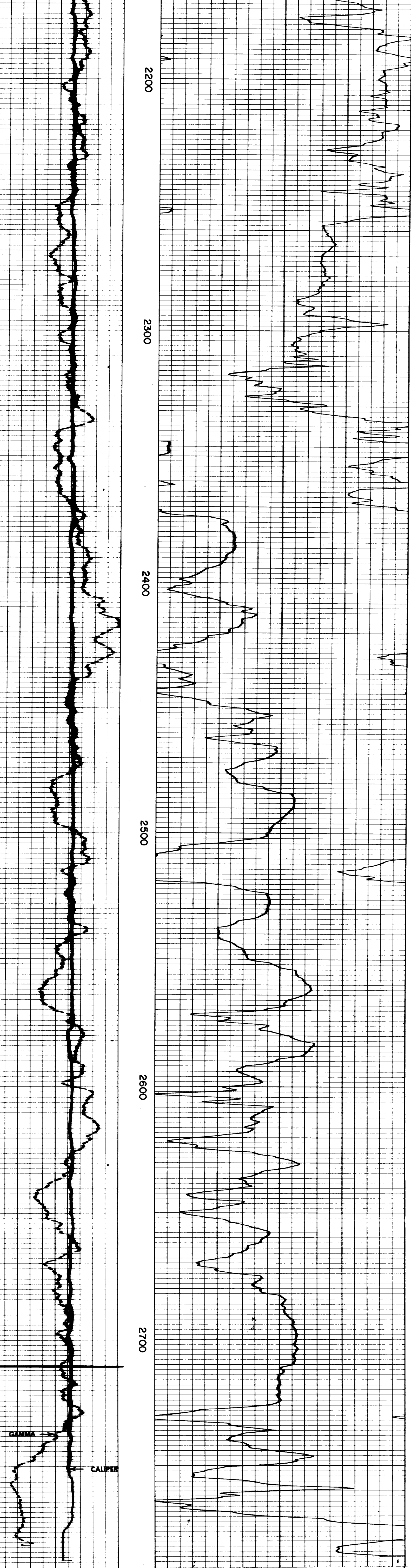
Welex does not guarantee the accuracy of any interpretation of log data, conversion of log data to physical rock parameters, or recommendations which may be given by Welex personnel or which may appear on the log or in any other form. Any user of such data, interpretations, conversions, or recommendations agrees that Welex is not responsible, except where due to gross negligence or willful misconduct, for any loss, damages, or expenses resulting from the use thereof.

5" = 100'

| TRAVEL TIME<br>MICROSECONDS PER FT.<br>T-R <sub>1</sub> -R <sub>2</sub> |     |
|---|-----|
| 170   | 120 |
| 70  |     |

| GAMMA<br>API Gamma Ray Units 100 |     |
|----------------------------------|-----|
| 0                                | 100 |

| CALIPER<br>Average Diameter In. 16 |    |
|------------------------------------|----|
| 6                                  | 16 |



| CALIPER<br>Average Diameter In. 16 |    |
|------------------------------------|----|
| 6                                  | 16 |

| GAMMA<br>API Gamma Ray Units 100 |     |
|----------------------------------|-----|
| 0                                | 100 |

| TRAVEL TIME<br>MICROSECONDS PER FT.<br>T-R <sub>1</sub> -R <sub>2</sub> |     |
|---|-----|
| 170   | 120 |
| 70  |     |

REICHHOLD ENERGY CORPORATION  
 COLUMBIA COUNTY 32-10  
 MIST  
 COLUMBIA COUNTY, OREGON

T.D. LOGGED 2786  
 T.D. DRILLER 2792  
 T.D. WELEX 2792  
 ELEV. 6L, 803.3 KB, 819.8

REPEAT SECTION

