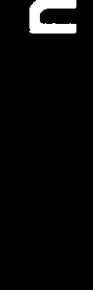


57 numbers

2 - BNC-SONIC



COMPANY: ARCO EXPLORATION AND TECHNOLOGY COMPANY
 WELL: COLUMBIA COUNTY #32-32

FIELD: MILBART
 COUNTY: COLUMBIA
 STATE: OREGON
 LOCATION: NE CORNER OF TWP 31 N
 SEC 32 RGE 5W

PERMANENT DATUM: GL
 ELEV. OF PERM. DATUM: 828.0 F
 LOG MEASURED FROM: KB
 DRG. MEASURED FROM: KB
 ELEVATIONS -
 KB1 842.5 F
 DFI 828.0 F

DATE: 7 NOV 85
 RUN NO: ONE

DEPTH-DRILLER: 2711.0 F
 DEPTH-LOGGER: 2710.0 F
 BTM LOG INTERVAL: 2663.0 F
 TOP LOG INTERVAL: 418.0 F
 CASING-DRILLER: 419.0 F
 CASING-LOGGER: 418.0 F
 CASING: 9.625
 BIT HEIGHT: 8.5 F
 BIT SIZE: 2711.0 F

OTHER SERVICES -
 DIL
 FDC-CNL-GR
 VSP-MSR
 HDI
 SMS

PROGRAM
 TAPE NO:
 28-2A
 SERVICE
 ORDER NO:
 419267

TYPE FLUID IN HOLE: LIGNOSULFONATE
 DENSITY: 9.90 LB/G
 VISCOSITY: 41.0 S
 PH: 8.5
 FLUID LOSS: 0.5 CC
 SOURCE OF SAMPLE: FLOWLINE
 RMF: 3.390 DHMM AT 56.0 DEGF
 RMC: 2.930 DHMM AT 64.0 DEGF
 SOURCE RMF/RMC: 3.970 DHMM AT 64.0 DEGF
 RM AT BHT: 1.767 DHMM AT 121. DEGF
 RMF AT BHT: 1.625 DHMM AT 121. DEGF
 RMC AT BHT: 2.202 DHMM AT 121. DEGF

TIME CIRC. STOPPED: 0000 11-7
 TIME LOGGER ON BTM: 0645 11-7
 MAX. REC. TEMP: 121.0 DEGF

LOGGING UNIT NO: 8128
 LOGGING UNIT LOC: SACRAMENTO
 RECORDED BY: REINHIG
 WITNESSED BY: JACKSON

REMARKS:

RUN IN COMBINATION WITH DIL
 LOG NOT STARTED AT BOTTOM DUE TO STICKY HOLE CONDITIONS
 REPEAT SECTION MADE OVER ZONE OF INTEREST
 SP AND DT CURVES OFF DEPTH FOR WAVEFORM PASS

EQUIPMENT NUMBERS-

DIS-EA 217 DIC-DA 211 MCD-DA 280 SLS-RC 525
 SLC-FA 1589 SLM-DA 383 IEM-BC 1070

ALL INTERPRETATIONS ARE OPINIONS BASED ON INFERENCES FROM ELECTRICAL OR OTHER MEASUREMENTS AND WE CANNOT, AND DO NOT GUARANTEE THE ACCURACY OR CORRECTNESS OF ANY INTERPRETATIONS, AND WE SHALL NOT, EXCEPT IN THE CASE OF GROSS OR HILFUL NEGLIGENCE ON OUR PART, BE LIABLE OR RESPONSIBLE FOR ANY LOSS, COSTS, DAMAGES OR EXPENSES INCURRED OR SUSTAINED BY ANYONE RESULTING FROM ANY INTERPRETATION MADE BY ANY OF OUR OFFICERS, AGENTS OR EMPLOYEES. THESE INTERPRETATIONS ARE ALSO SUBJECT TO OUR GENERAL TERMS AND CONDITIONS AS SET OUT IN OUR CURRENT PRICE SCHEDULE.

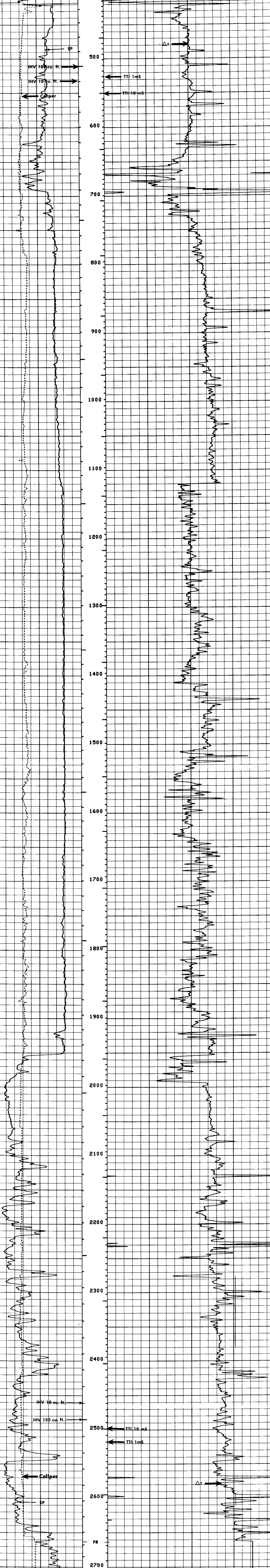
CP 28.2A FILE 102 07-NOV-85 09:39
 DATA ACQUIRED 07-NOV-85 07:47

EVENT MARK SUMMARY:

OUTPUT INTERVAL DEPTH TRACK
 BETWEEN PIPS EDGE
 IHV 10.0000 F3 LEFT EDGE
 ITT .00100000 S RIGHT EDGE

CALI(IN) 6.0000 16.000
 SP (MV) -120.0 -20.00

DT (US/F) 175.00 75.000



CP 28.2A 5465 0600.0000 02-NOV-85 02:00

CALI(IN) 6.0000 16.000
 SP (MV) -120.0 -20.00

DT (US/F) 175.00 75.000

SENSOR MEASURE POINT TO TOOL ZERO

SRAT 41.4 FEET	AMPL 43.9 FEET
TT1 42.9 FEET	DTM 56.0000 US/F
TT3 40.2 FEET	DDEL 200 US
TO 43.9 FEET	DHCD 512 DHMM
SLTT 43.9 FEET	SBR 1.00000
CALI 31.8 FEET	FPHI SPHI
ILM 5.8 FEET	FNUM 620000
SP 2.5 FEET	BHS OPEN
TENS 2.5 FEET	DD 0.0 F
NDIS 2.5 FEET	

PARAMETERS

NAME	VALUE	UNIT	NAME	VALUE	UNIT
CDS	100.000		SPFS	R-H	
DTF	189.000	US/F	DTM	56.0000	US/F
DGIN	5	US	DDEL	200	US
DSEC	5.40000	MMHO	DHCD	512	DHMM
MSEC	5.90000	MMHO	SBR	1.00000	
FEXP	2.15000		FPHI	SPHI	
CSIZ	9.62500	IN	FNUM	620000	
BS	8.50000	IN	BHS	OPEN	
PP	NDRH		DD	0.0	F

TAPE NOT MADE