



MICRO-SEISMOGRAM LOG-CASED HOLE

5" - 100'

COMPANY - REICHHOLD ENERGY CORPORATION
WELL - COLUMBIA CO. NO. 33-3
FIELD - MIST NEHALEM BASIN
COUNTY - COLUMBIA STATE - OREGON

1690' NORTH & 385' EAST OF
3/4 CORNER OF
Sec. 3 Twp. 6N Rge. 5W
G.L. 10.5 P. Above From Datum
K.B. 1028.8
Elev. NB 1032.3
O.L. 1028.8

DATE & TIME SURVEY - 6-2-80 @ 4:30 P.M.
LOG MEASURED FROM - K.B.
DURING MEASURED FROM - K.B.
LOG MEASURED FROM - G.L.
DATE & TIME SURVEY - 6-2-80 @ 4:30 P.M.
LOG MEASURED FROM - K.B.
DURING MEASURED FROM - K.B.
LOG MEASURED FROM - G.L.

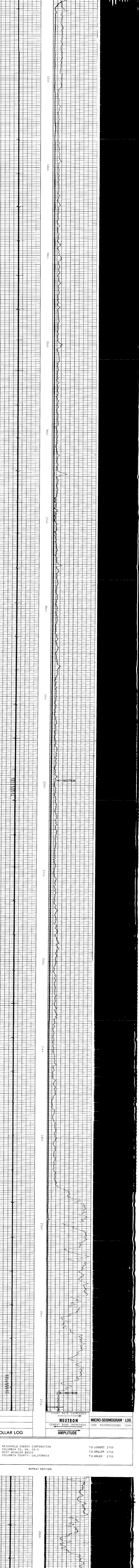
Sequence Depth - N/A
Amount & Type Cement - 500 SACKS CLASS. B.
Type Fluid in Hole - DRILLING FLUID
Fluid Level (C) - FULL
Sinking PM/A - N/A
Approx. Logged Com Top - 1100
Calculated Cement Top - 1100
Max. Hole Temperature - 72
Sound Recorded - 4/2 2/29 3/24 2/8/88
Equipment - Location - 9430 WELLD
Recorded by - KIMBERRY
Checked by - JAMISON

BORE HOLE RECORD and CASING RECORD tables with columns for Bit Size, From, To, Csg Size, Wt, From, To, Centralized Interval, Scratched Interval, Open Perforations.

Service Ticket No. 055361 Remarks

WELLEX does not guarantee the accuracy of any interpretation of log data. Conversion of log data to physical rock parameters or recommendations which may be given by Wellex are those for which the user is responsible. Any user of this data who is not a representative of the company who has authorized the use of this data agrees that Wellex is not responsible, except where due to gross negligence or willful misconduct for any loss, damages, or expenses resulting from the use thereof.

COLLAR LOG



COLLAR LOG

REICHHOLD ENERGY CORPORATION
COLUMBIA CO. NO. 33-3
MIST NEHALEM BASIN
COLUMBIA COUNTY, CALIFORNIA

T.D. LOGGED 2705
T.D. DRILLER 2716
T.D. WELLEX 2705

REPEAT SECTION

