

CC 34-08-15



**HALLIBURTON**  
LOGGING SERVICES, INC.  
FINAL PRINT

**ACOUSTIC VELOCITY**  
**GAMMA RAY**  
**LOG**

2" - 100'  
COMPANY AREGO OIL AND GAS COMPANY  
WELL SKINK CARRAGE CC 34-8-75  
FIELD MIST

COUNTY COLUMBIA  
APPROXIMATE LOCATION: N 1/4  
141 77 FEET NORTH AND  
141 77 FEET WEST FROM  
THE SOUTHWEST CORNER OF:  
SEC. 8 TWP. 27N R2E S16

PERMANENT DATUM G. L. ELEV. 660.55  
LOG MEASURED FROM K. B. D. F. 672.05  
DITTING MEASURED FROM KELLY BUSHING  
DATE 08/27/89

LOG MEASURED FROM K. B. D. F. 672.05  
DITTING MEASURED FROM KELLY BUSHING  
DATE 08/27/89

LOG MEASURED FROM K. B. D. F. 672.05  
DITTING MEASURED FROM KELLY BUSHING  
DATE 08/27/89

LOG MEASURED FROM K. B. D. F. 672.05  
DITTING MEASURED FROM KELLY BUSHING  
DATE 08/27/89

LOG MEASURED FROM K. B. D. F. 672.05  
DITTING MEASURED FROM KELLY BUSHING  
DATE 08/27/89

LOG MEASURED FROM K. B. D. F. 672.05  
DITTING MEASURED FROM KELLY BUSHING  
DATE 08/27/89

Service Ticket No.: 12307 API Serial No.: N/A PGM Version: 1.31 PC  
Change in Mud Type or Additional Samples RESISTIVITY SCALE CHANGES

Date/Sample No.	09/27/89:ONE	Type Log	Depth	Scale Up Hole	Scale Down Hole
Depth-Driller					

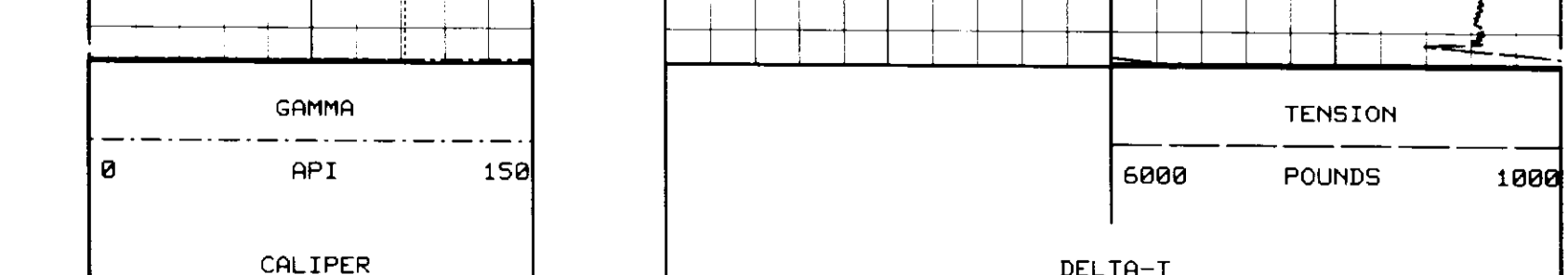
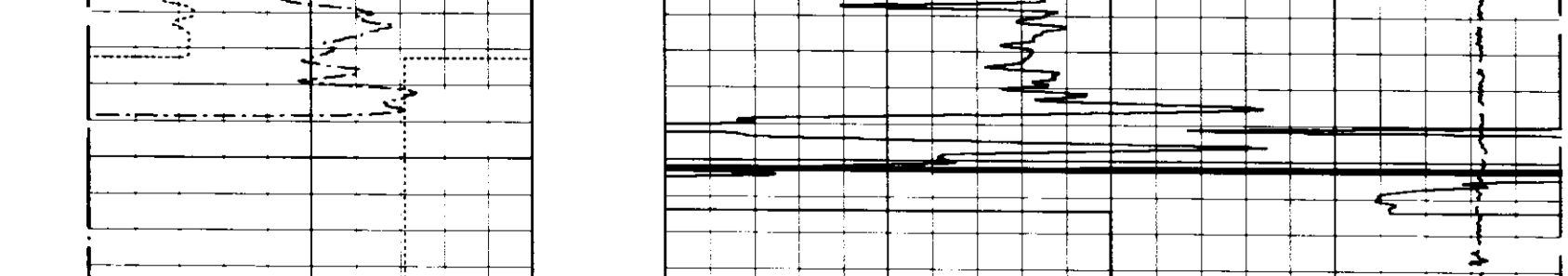
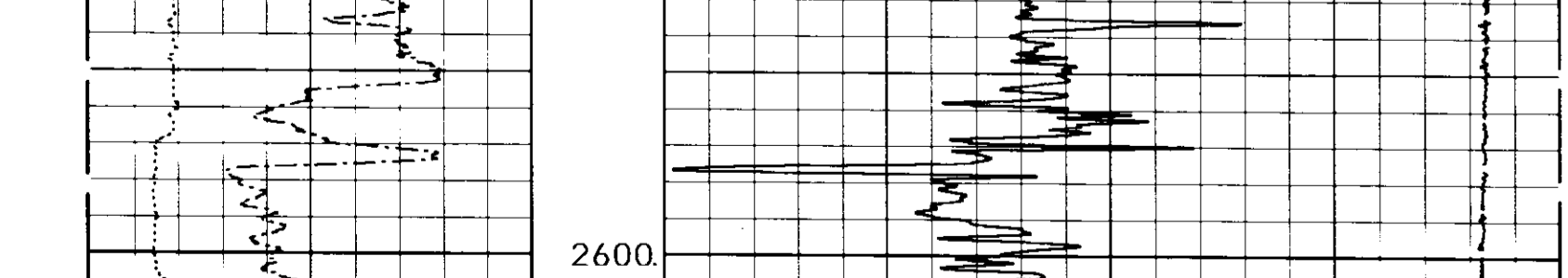
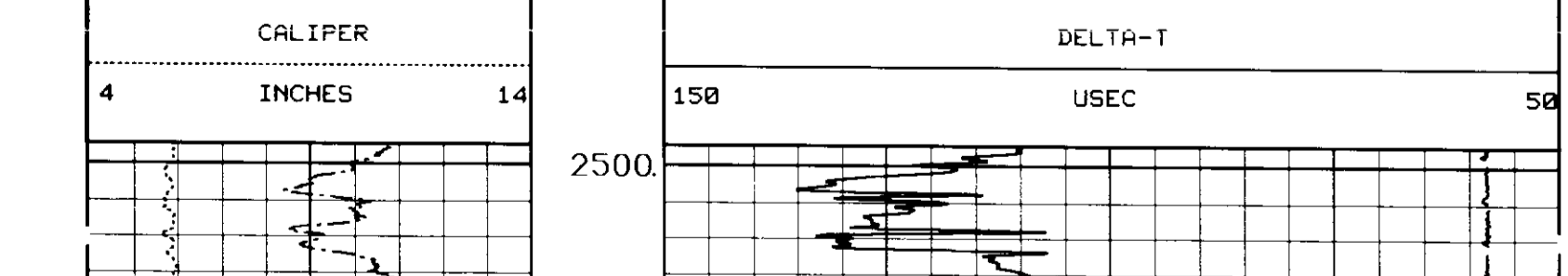
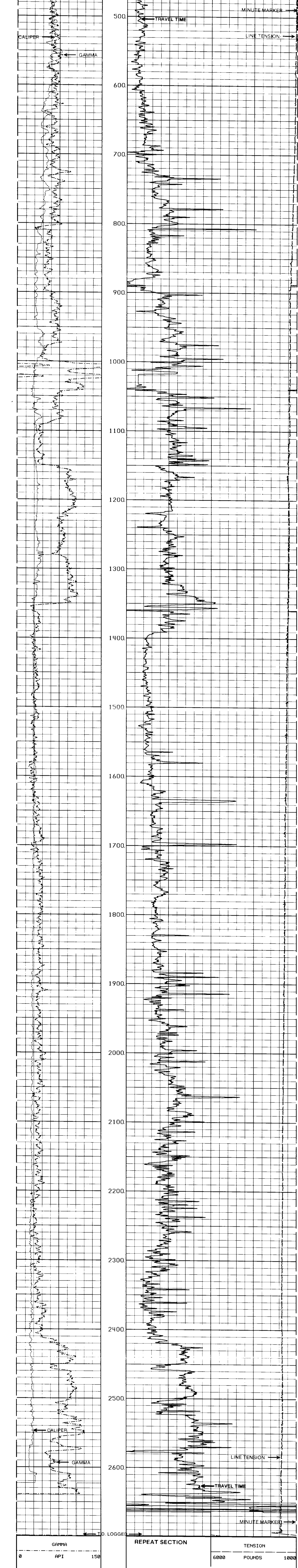
Run No.	ONE	Run No.	ONE	Run No.	N/A	Run No.	N/A
Serial No.	W108594	Serial No.	W112458	Serial No.	W109740	Serial No.	W108749
Model No.	432	Model No.	305	Model No.	465	Model No.	434
Diameter	3 5/8	No. of Cent.	FOUR	Diameter	4 1/2	Diameter	3 5/8
Detector Model No.	N/A	Spacing	1 FOOT	Log Type	GAMMA	Log Type	NEUTRON
Type	SCINT.	Source Type	CS137	Source Type	AM241BE	Source Type	AM241BE
Length	4 IN.	Serial No.	118	Serial No.	66	Serial No.	66
Distance To Source	N/A	Strength	1.5 CU.	Strength	19.5 CU.	Strength	19.5 CU.

Run No.	ONE	Run No.	ONE	Run No.	N/A	Run No.	N/A
Serial No.	W108594	Serial No.	W112458	Serial No.	W109740	Serial No.	W108749
Model No.	432	Model No.	305	Model No.	465	Model No.	434
Diameter	3 5/8	No. of Cent.	FOUR	Diameter	4 1/2	Diameter	3 5/8
Detector Model No.	N/A	Spacing	1 FOOT	Log Type	GAMMA	Log Type	NEUTRON
Type	SCINT.	Source Type	CS137	Source Type	AM241BE	Source Type	AM241BE
Length	4 IN.	Serial No.	118	Serial No.	66	Serial No.	66
Distance To Source	N/A	Strength	1.5 CU.	Strength	19.5 CU.	Strength	19.5 CU.

Remarks: DELTA-T STRAIGHT LINE AT 1030 DUE TO LOSS OF SIGNAL FROM BOREHOLE CONDITIONS

CREW ON LOCATION: JEFFREY, BRIGHT  
THANK YOU FOR USING HALLIBURTON LOGGING SERVICES!

Halliburton Logging Services, Inc. does not guarantee the accuracy of any interpretation of log data, conversion of log data to physical rock parameters or recommendations which may be given by H.S. personnel or which may appear on the log or in any other form. The user of such data, interpretations, conversions or recommendations agrees that H.S. is not responsible in any way for any loss, damage, or expense resulting from the use thereof.



-End-