



COMPENSATED  
ACOUSTIC VELOCITY  
LOG

FINAL PRINT  
COMPANY ARCO OIL AND GAS COMPANY

WELL DEEP CREEK PROSPECT  
FIELD MIST  
COUNTY COLUMBIA  
LOCATION 1003.59 FT. NORTH  
AND 2843.76 FT. WEST FROM  
THE SOUTHWEST CORNER OF  
C01L/05W/08

PERMANENT DATUM 6.1  
LOG MEASURED FROM K. 8. 11.5 FT. ABOVE PERM. DATUM  
LOG MEASURED FROM K. 8. 11.5 FT. ABOVE PERM. DATUM  
DATE 10/27/89  
DEPTH-DRILLER 2240  
DRILL LOG INTER. 2229  
LOG MEASURED FROM K. 8. 11.5 FT. ABOVE PERM. DATUM  
DATE 10/27/89

TYPE FLUID IN HOLE LSA/FOUR  
DENS. FLUID LOSS 9.0  
SOURCE OF SAMPLE CIRCULATED  
RM # MESS. TEMP. 2.74 97.5  
RM # MESS. TEMP. 2.50 97.5  
SOURCE TIME - SEC. MESS. INJERS  
RM # SHUT 2.00 110.5  
TIME SHUT CIRC. 3.5 HOURS  
TIME ON BOTTOM 07:55:10  
TIME TO SET LOG 10:32:10  
RECORDED BY J. ENSTER

Fold Here

Service Ticket No.: 28521	API Serial No.: NA	PGM Version: 2.20 E
Change in Mud Type or Additional Samples	RESISTIVITY SCALE CHANGES	DEPTH SCALE CHANGES
Date/Sample No. / /	Type Log	Scale Up Hole/Scale Down Hole
Depth-Driller	Type Fluid	
Dens. : Visc.		NONE
pH. : Fluid Loss		
Source of Sample	RESISTIVITY EQUIPMENT DATA	
Rm @ Meas. Temp.	Run No	Tool Type & No/Pad Type/Tool Pos./Other
Rwf @ Meas. Temp.	ONE	DSTU #111527 M430
Rmc @ Meas. Temp.		
Source: Raf:Rmc		
Rm @ BHT	2.00 @105	
Rwf @ BHT	1.83 @105	
Rmc @ BHT	2.25 @105	

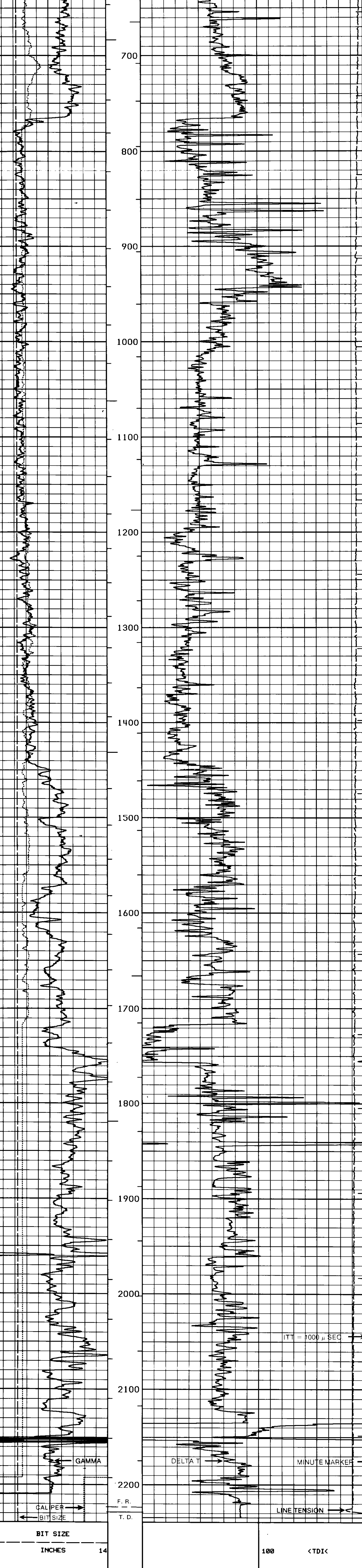
GAMMA		ACOUSTIC		DENSITY		NEUTRON	
Run No.	ONE	Run No.	ONE	Run No.		Run No.	
Serial No.	W108579	Serial No.	W112468	Serial No.		Serial No.	
Model No.	432	Model No.	385	Model No.		Model No.	
Diameter	3.625	No. of Cent.	2	Diameter		Diameter	
Detector Model No.	NA	Spacing	1 FT.	Log Type		Log Type	
Type	SCINT	Source Type		Source Type		Source Type	
Length	4"	Serial No.		Serial No.		Serial No.	
Distance To Source	NA	FWDA	Y	Strength		Strength	

GENERAL		GAMMA		ACOUSTIC		DENSITY		NEUTRON	
Run No.	ONE	Run No.	ONE	Run No.		Run No.		Run No.	
Depth	TD	Depth	CSG	Scale	30	Scale	150	Scale	50
From To	TD	From To	CSG	L	R	L	R	L	R
Speed		Speed		L	R	L	R	L	R
Matrix		Matrix		Matrix		Matrix		Matrix	
US/FT		US/FT		US/FT		US/FT		US/FT	

Remarks: TWO REPEAT SECTIONS ATTACHED AT CUSTOMER REQUEST. SIGNAL DROPPED OUT COMPLETELY FROM 2150 - 2150 FT. BECAUSE OF FORMATION, AND CYCLE SKIPPED AREA RESULTED.

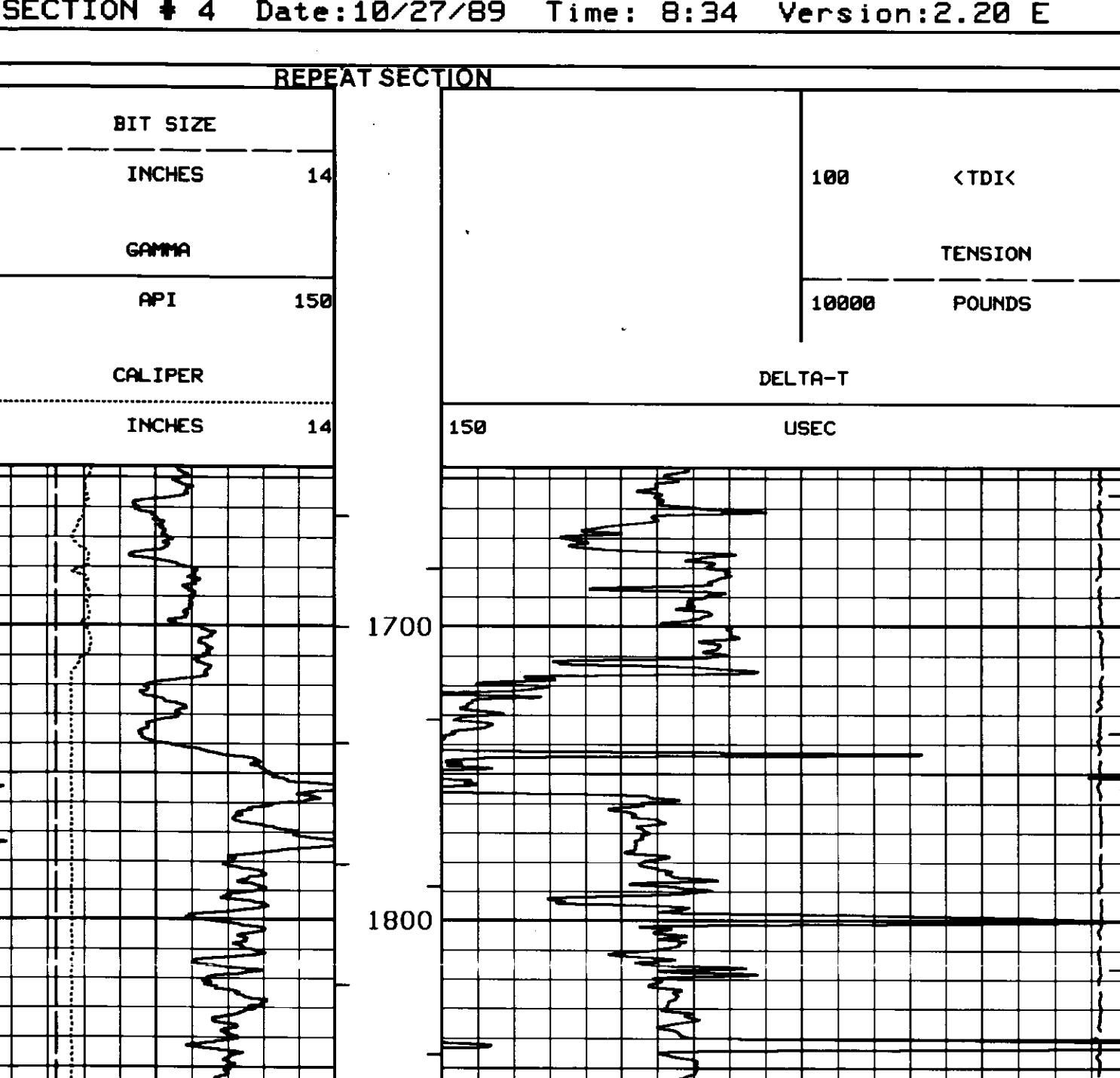
CREW: J. HARES, W. LARSON

Halliburton Logging Services, Inc. does not guarantee the accuracy of any interpretation of log data, conversion of log data to physical units, or any other data, interpretation, conversion or recommendation which may appear on the log or in any other form. Any use of such data, interpretation, conversion or recommendation is at the user's risk. The user assumes all liability for any loss, damage, or expense resulting from the use thereof.



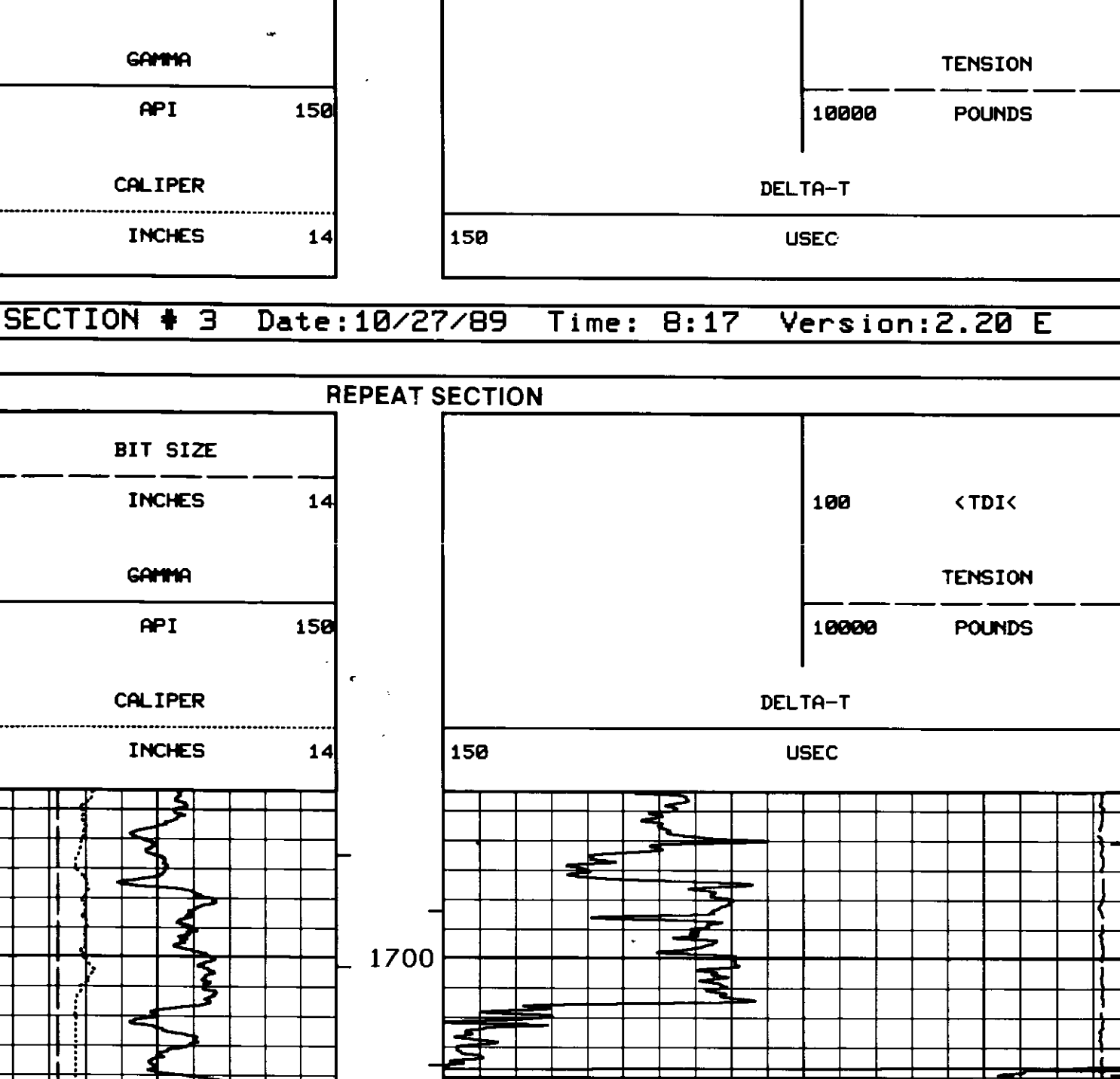
SECTION # 4 Date:10/27/89 Time: 8:34 Version:2.20 E

REPEAT SECTION



SECTION # 3 Date:10/27/89 Time: 8:17 Version:2.20 E

REPEAT SECTION



SECTION # 2 Date:10/27/89 Time: 8: 2 Version:2.20 E

- END -